

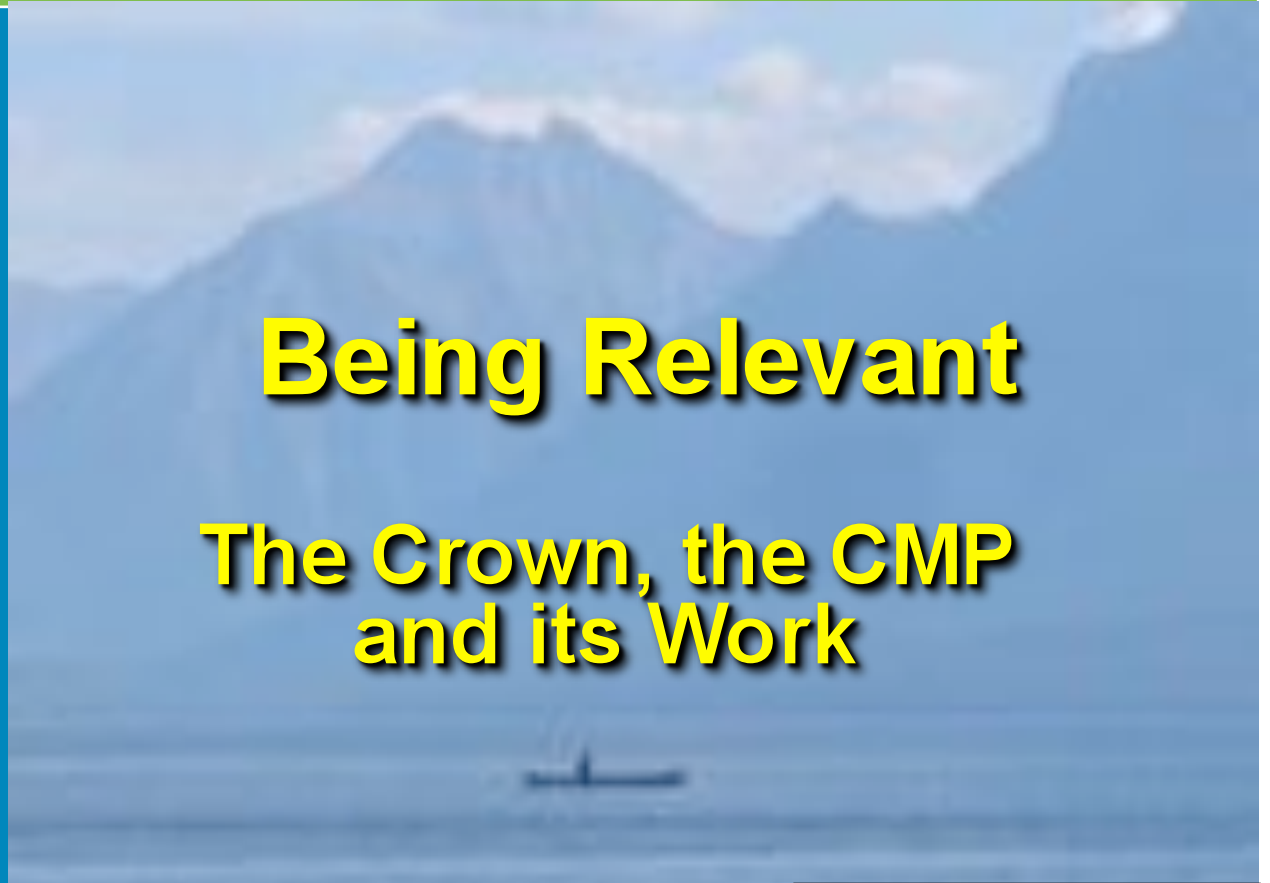


Crown Managers  
Partnership



# Being Relevant

## The Crown, the CMP and its Work



# Presentation Overview

- Overview of the Crown
- About the CMP
- Current CMP work



# Presentation Overview

- Overview of the Crown
  - importance
  - issues
  - interconnectivity



# Not Just Another Place





# Not Just Another Place...



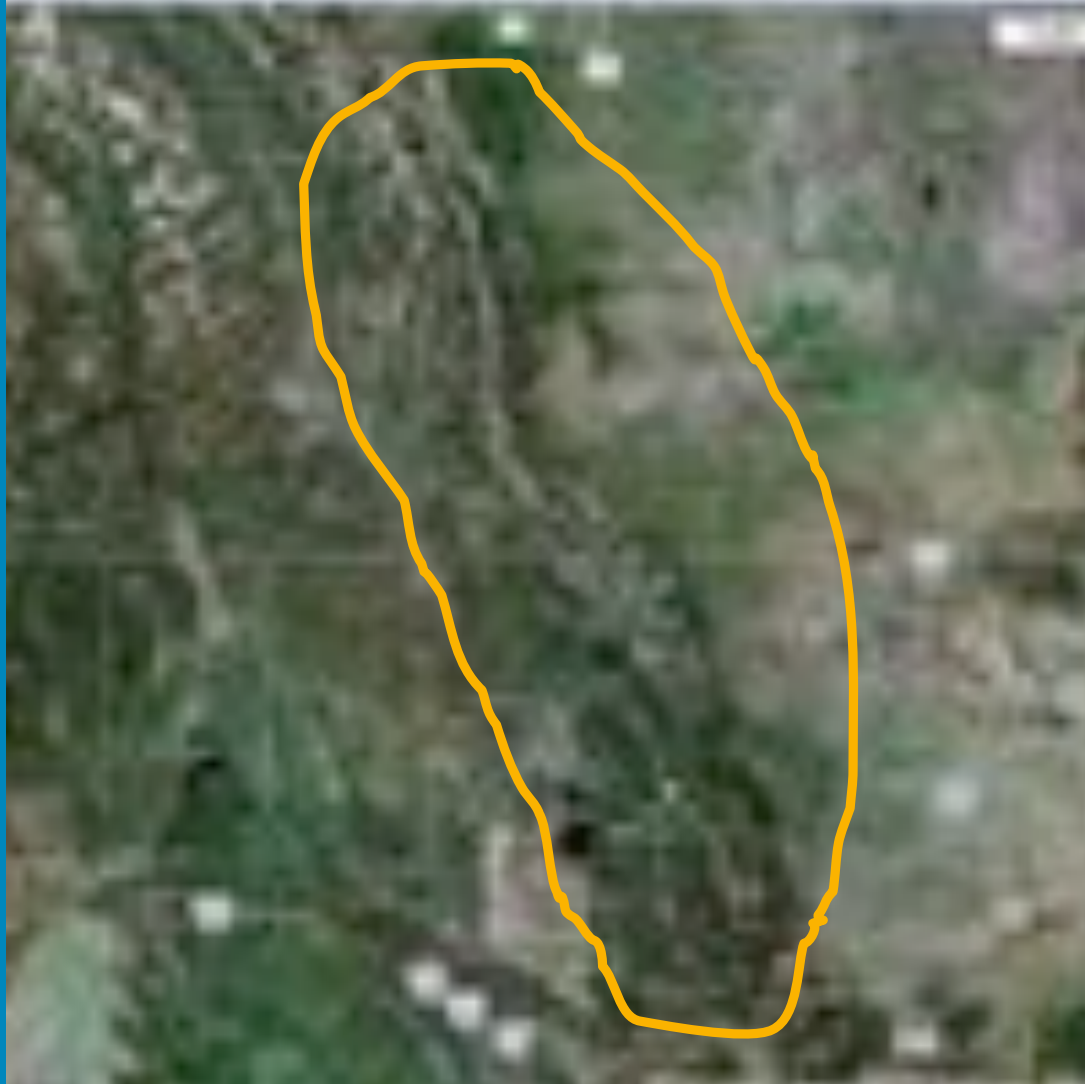
Crown Managers  
Partnership

# Not Just Another Place...



Crown Managers  
Partnership

# Not Just Another Place...



# Place-Based Context...



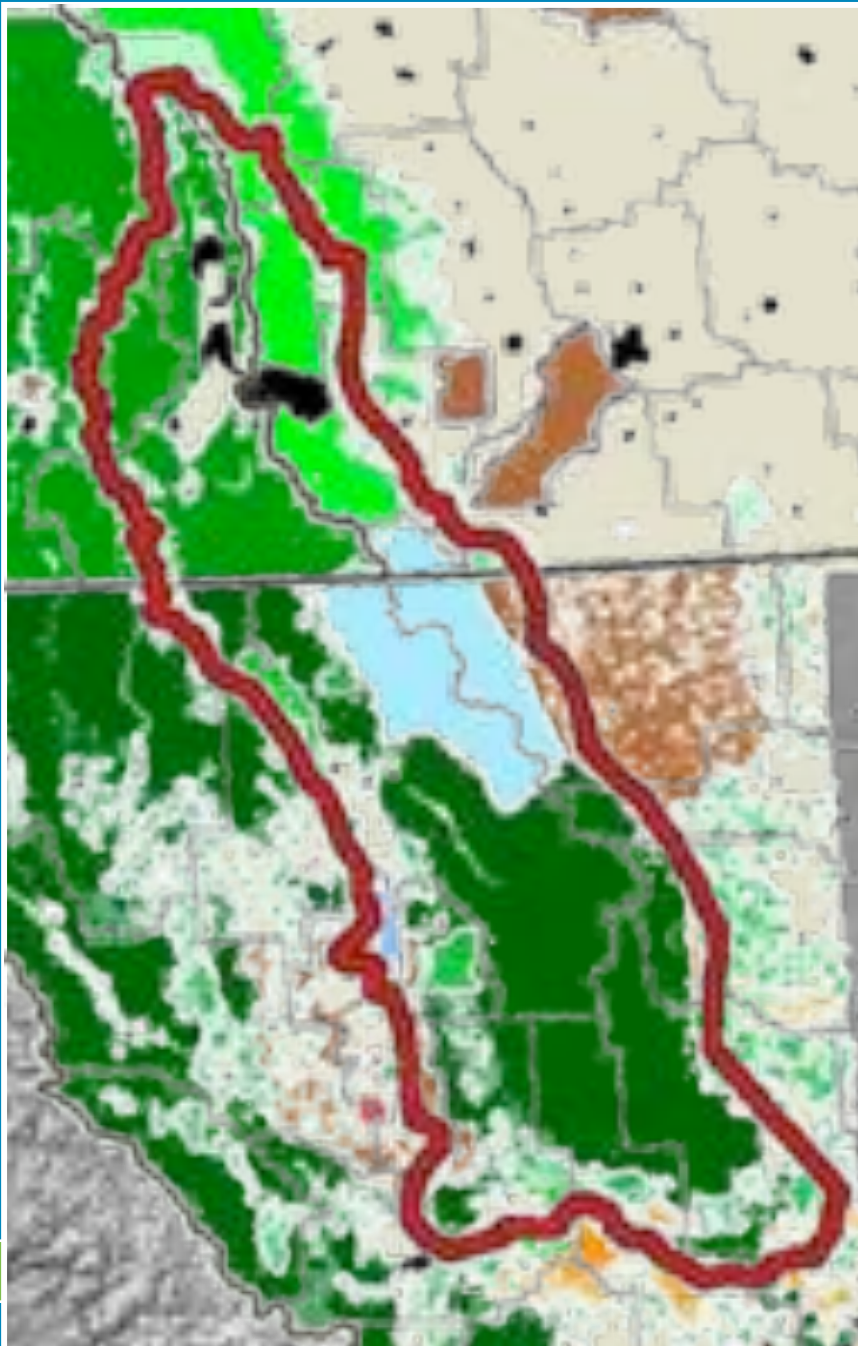
Crown Managers  
Partnership



# Crown of the Continent Ecosystem

- Large, intact ecosystem
- High profile setting
- Unique attributes
- Peace Park at core
- Highly valued





First Nation / Tribal Lands  
Parks Canada / U.S. National Parks Service  
B.C. Ministry of Environment  
Alberta Tourism, Parks and Recreation  
B.C. Ministry of Forests  
United States Forest Service  
Alberta Sustainable Resource Development  
United States Fish and Wildlife  
Montana DNRC (State Forests)  
U.S. Bureau of Land Management  
Private Land  
Counties / MDs / Regional Districts  
Cities / Towns / Villages

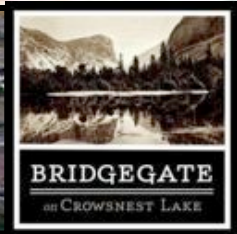
## Jurisdictional Complexity

# Crown Pressures

- Climate Change
- Invasive weeds
- Fire Management
- Urban and rural residential development
- Tourism and recreational use
- Resource use and extraction
- Environmental Quality
- Water Quality, quantity, fisheries, aquatics
- Wildlife habitat – fragmentation and loss
- Degradation of ecosystem goods and services



# Alberta Hot Spot





# B.C. Hot Spot

- Natural resource economy
- Cabin Creek
- B.C. planning
- Protected Areas Agenda



# Montana Hot Spot

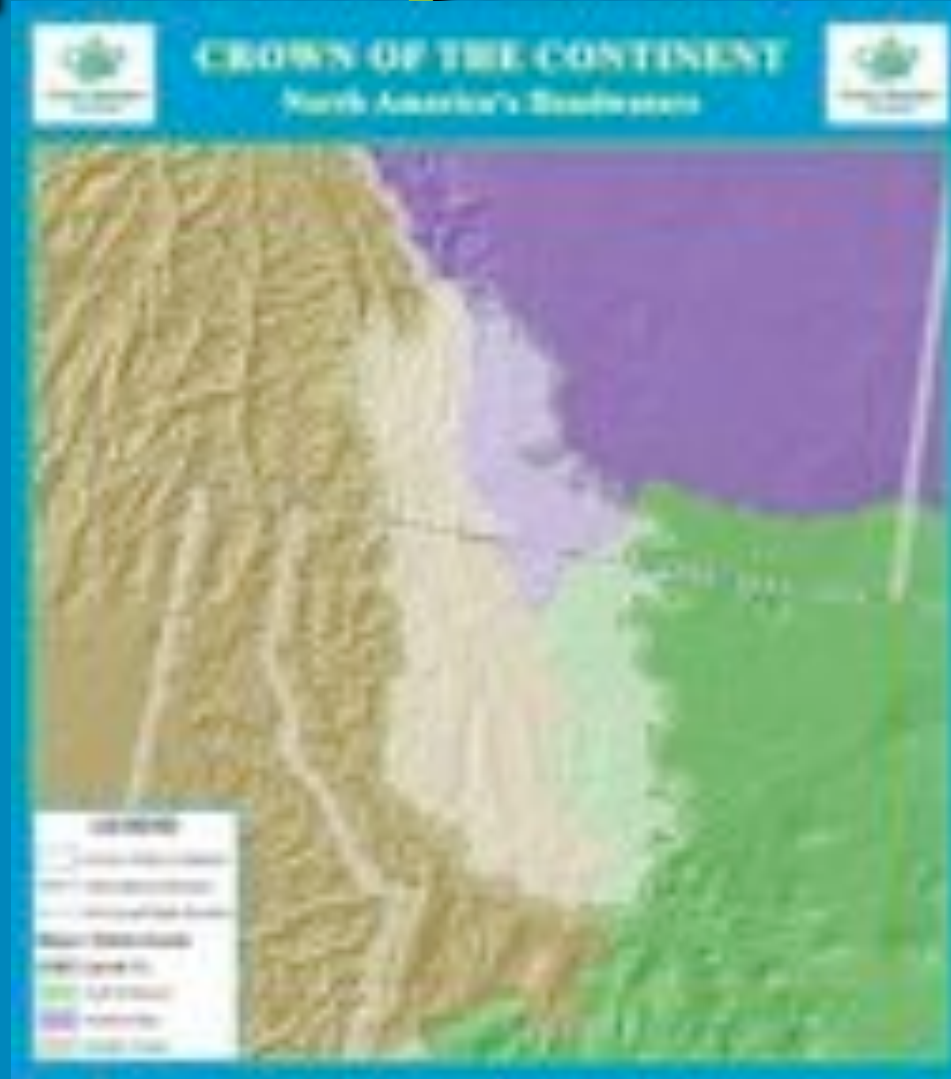
- Agency history
- Protected Areas
- Rocky Mountain Front
- The Flathead



# Interdependency: Water

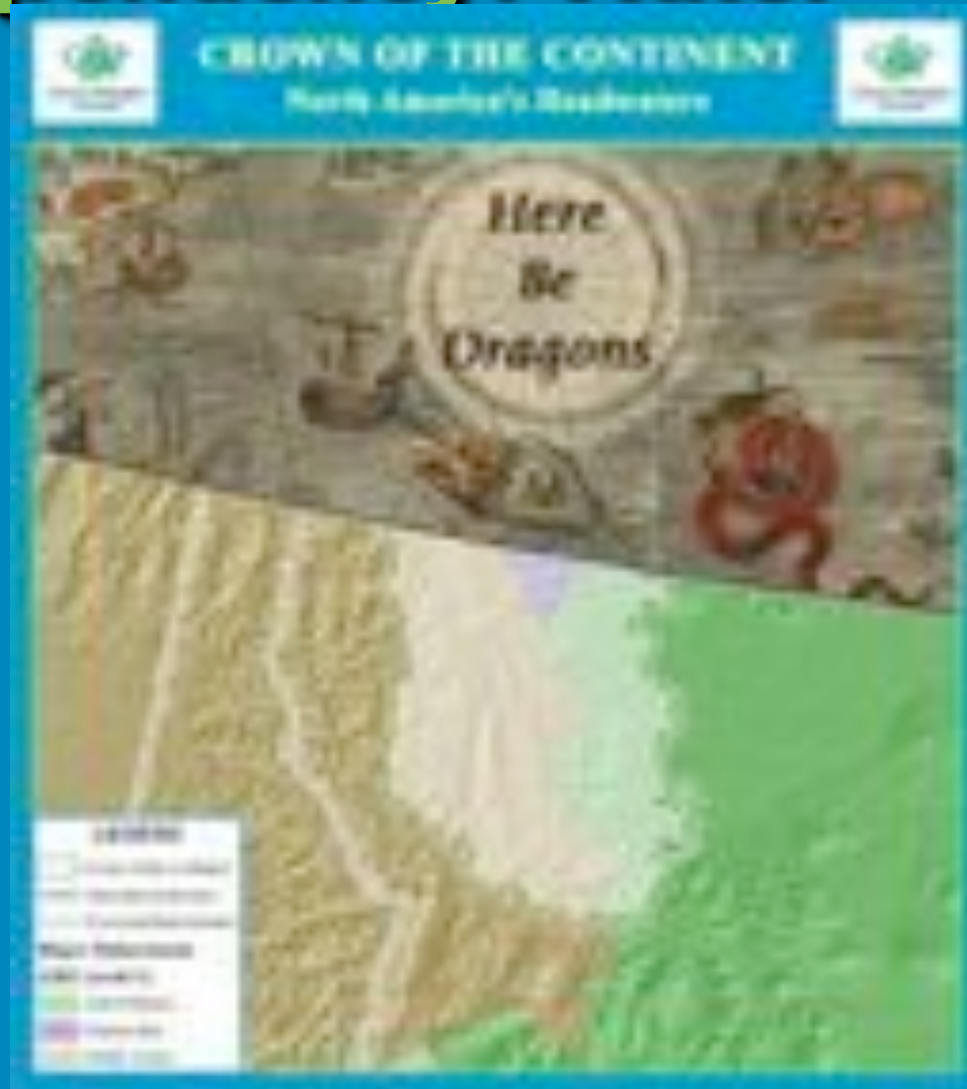


# Interdependency: Water





# Interdependency: Water



# Interdependency: Grizzlies



# Interdependency: Grizzlies



# Interdependency: Grizzlies





# Linkages and Liabilities



# Presentation Overview

- Overview of the Crown
- About the CMP
  - origins
  - modus operandi
- Current CMP work



# Crown Managers Partnership Genesis

## 20<sup>th</sup> Century:

- International Peace Park

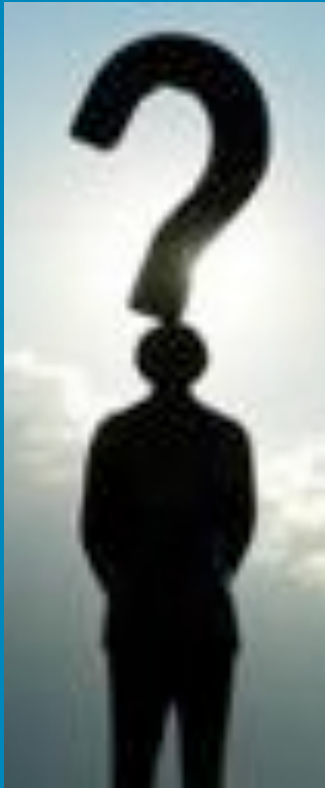


## 21<sup>st</sup> Century:

- A broader partnership



# Crown Pressures and Issues



- Common underlying flash-point/risk factor  
(it's the environment, stupid)
- Misaligned agendas  
(interest in different outcomes)
- Limited individual resources  
(but significant collective horsepower)
- Issues go beyond any individual agency's ability to resolve  
(mandate, geography)



# Limited Resources and Mandate



Crown Managers  
Partnership

# Crown Managers Partnership History

## Cranbrook 2001:

- Cumulative effects of human activity
- Increased public interest in land
- Recreational and visitation demands
- Shared data and monitoring
- Maintenance and sustainability of shared wildlife populations



# Crown Managers Partnership History

- April 2002, Whitefish: Cumulative Effects
- April 2003, Pincher Creek: ALCES
- Feb 2004, Cranbrook: Fire
- March 2005, Kalispell: Invasive plants
- March 2006, Lethbridge: Watershed Partnerships
- March 2007, Cranbrook: Ecological Health
- March 2008, Whitefish: Carnivores
- Feb 2009, Pincher Creek: Biodiversity
- April 2010: Fernie: Climate Change



# CMP Modus Operandi

## Structure:

- Cooperative agency partnership (CMP doesn't manage, agencies do)
- Participants: federal state and provincial agencies, tribes and First Nations, educational institutions
- Steering Committee

## Guidance:

- Strategic Plan
- Annual Forums based on themes
- Annual Workplan
- Projects

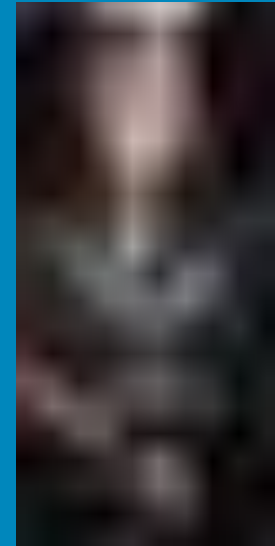


# CMP Steering Committee 2011

- **Bill Dolan (Chair): Alberta Tourism, Parks and Recreation, AB**
- **Mary Riddle: Glacier National Park, MT**
- **Dennis Madsen: Waterton Lakes National Park, AB**
- **Len Broberg: University of Montana, MT**
- **Mike Quinn: University of Calgary, AB**
- **Tom Bell: B.C. Ministry of Environment, B.C.**
- **Caryn Miske: Flathead Basin Commission, MT**
- **Erin Sexton: Flathead Lake Biological Station, MT**
- **Jimmy DeHerrera: Flathead National Forest, MT**
- **Steve Frye: Dept of Natural Resources and Conservation, MT**
- **Travis Ripley, Alberta Sustainable Resource Development, AB**
- **Ian Dyson, Alberta Environment, AB**

**Coordinator:**

**Sasha Harriet**



Crown Managers  
Partnership

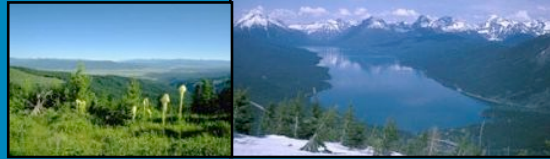
# Presentation Overview

- Overview of the Crown
- About the CMP
- **Current CMP work**
  - **Ecological Health**
  - **Strategic Plan**
  - **Cartography**
  - **Relationships**



# Underlying Environmental Risk, Misaligned Mandates: What if?

## Environmental Stewardship



Assurance of regional environmental quality



# A Better Way Forward?

## Environmental Quality:

- As good as it gets

## Land Use Challenges:

- Chronic and continuing hot spot

## Jurisdictional Challenges:

- Complex and trans-boundary

## Response:

 Assure environmental quality

 Manage growth pressures

 Common outcomes align



# Ecological Health Project

- Long-term, multi-faceted project aimed at defining a level of ecological health that can inform agencies' management;
- Multi-year strategic priority for CMP;
- Establish an indicators-based, environmental outcomes approach

# Managing for Ecological Health



# Drowning in Information

Nitrates Protozoa Salinity Ozone

Range Health

Fecal Coliforms

Sulfur Dioxides

Species Distribution

Dissolved Oxygen

Native Vegetation

Nitrogen Oxides

Soil Organic Matter

Loss of Species

Pesticides

Dissolved Phosphorus



Road Density

Carbon Storage

Noxious Weeds

Suspended sediment

Riparian Health

Primary productivity

Turbidity

Old growth

Ammonia

Species Abundance

Particulate Matter

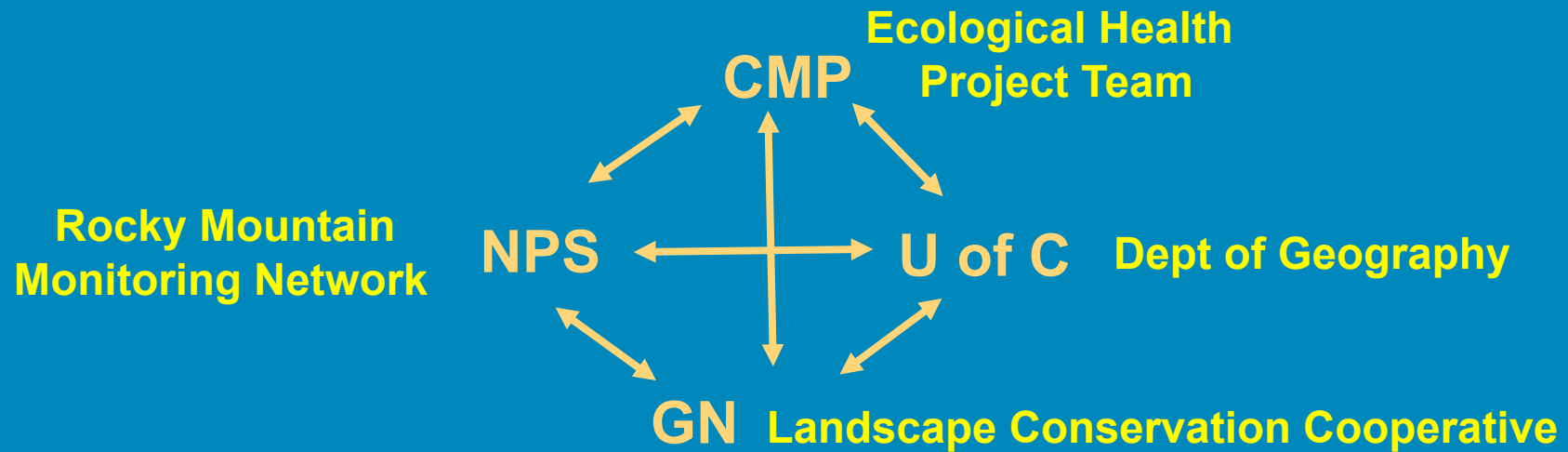
# Indicators of Ecological Health

- Landscape
- Biodiversity
- Water quality
- Exotics
- Climate
- Air quality



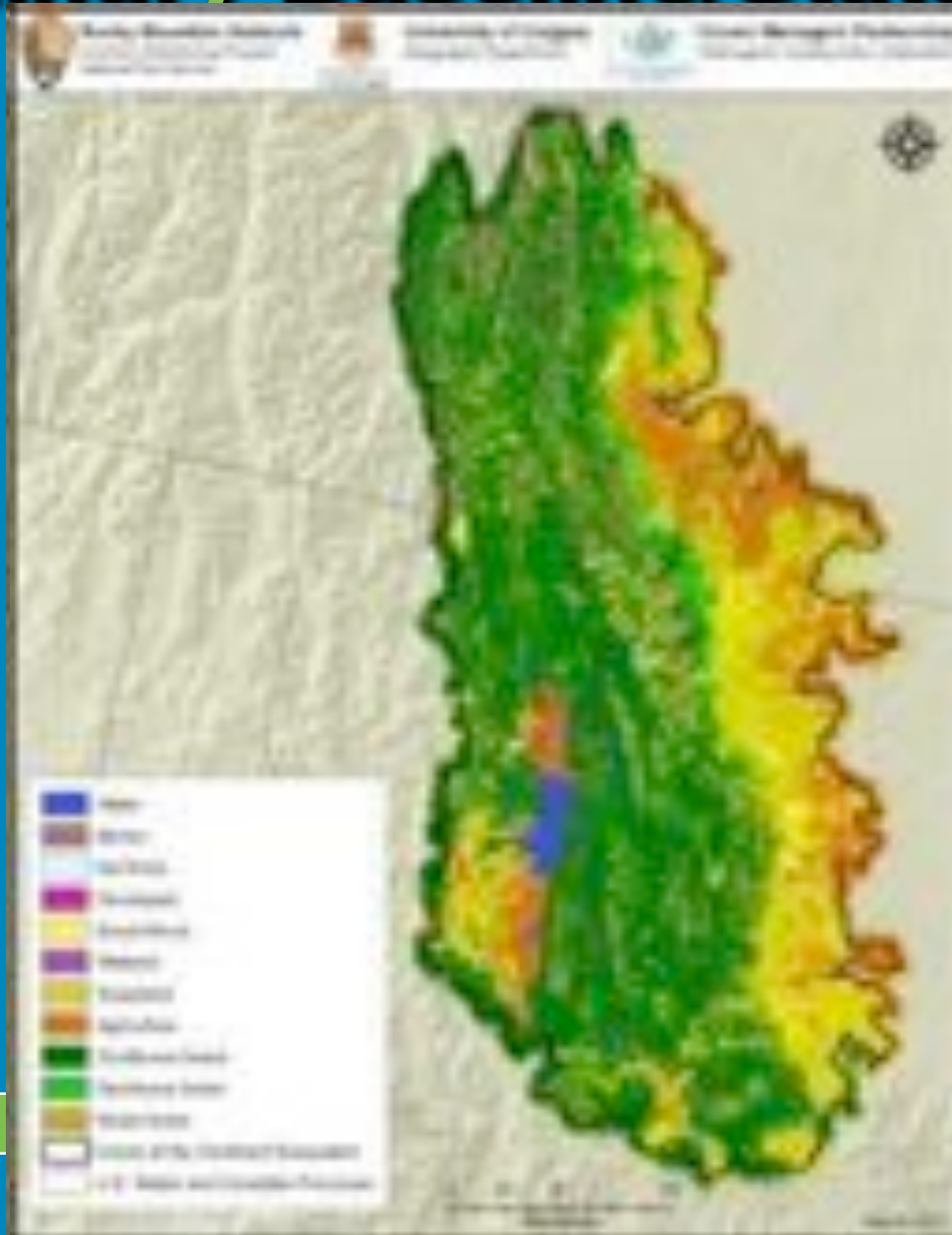


# An EH Partnership

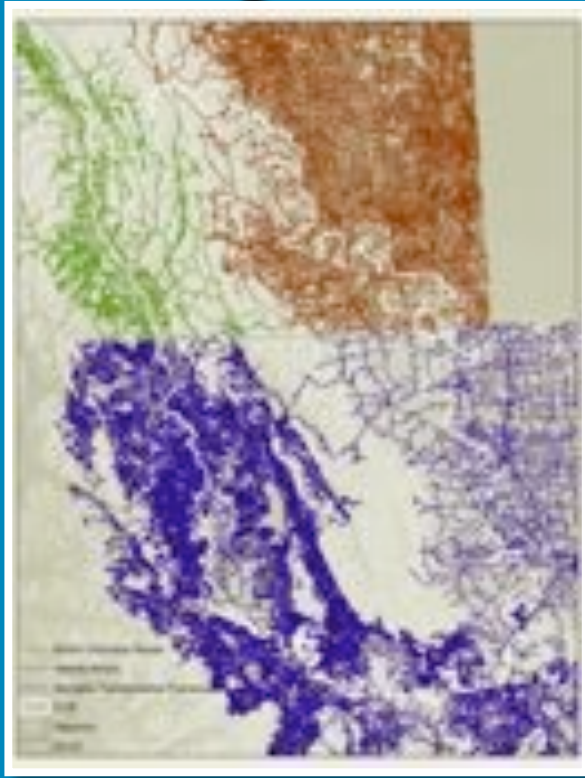


- Assemble targeted data
- Analysis:
  - assemble baseline/status data
  - analysis of landscape metrics
  - monitor change over time

# Preliminary Baseline/Status Data



# Roads example: it might look simple...



State and  
Provinces Roads



Statistics and  
Census Roads



Comparison  
*Gaps*

# Ecological Health Project 2010-11

- Ongoing research, analysis and documentation of Ecological health in the CCE.
- Game plan to date: Phase 1) assemble baseline/status data for the CCE; Phase 2) run the analysis of the landscape metrics; Phase 3) monitor change over time
- Nov '10: Landscape Analysis workshop. West Glacier
  - Phase I conclude: inventory and synthesis of freely available geospatial data
  - Phase 2 landscape analysis priorities
- March '11: GN LCC funding proposal:
  - Year 1: CCE level landscape data interpretation
  - Year 2: CCE level habitat connectivity analysis ( GB, CL, BT,WCT)
- Scope out 'full project' game plan (Strategic Plan)



# CMP Strategic Plan (2011)

**Vision:** An ecologically healthy Crown of the Continent Ecosystem

**Mission:** A diverse group of agencies working together to achieve the vision by:

- Improving understanding of ecological health
- Raising awareness and support for ecological health
- Promoting collaboration in managing together for ecological health
- Enhancing Organizational Strength – stability and capacity for the CMP



# CMP Strategic Plan (2011)

## Strategies:

- Documenting ecological health and trends in the CCE;
- Developing targets and indicators related to ecological health across the CCE;
- Facilitating and promoting actions by agencies to meet desired ecological health outcomes;
- Managing for uncertainty around climate change and its implications for ecological indicators;
- Promoting agency and public understanding of the significance of the CCE and the strategic focus of the CMP; and
- Establishing effective administrative and financial mechanisms amongst agencies in the CMP to advance the shared outcomes of the CMP.

# Cartography

- Design mapping template for CMP products
- Creation or acquisition of thematic data sets
- Initial suite of maps: see displays (DRAFT)
- Raw data in a file geo-database
- Custom mapping Google Earth-based application for CMP.

# Relationships

- Great Northern Landscape Conservation Cooperative
- Crown of the Continent Initiative



The University of  
**Montana**



Crown Managers  
Partnership



# Relationships

- Crown of the Continent Educational Consortium



- Crown Roundtable

Roundtable on the Crown of the Continent



- Crown of the Continent Geotourism Council



# CMP 2011-12

- **New Strategic Plan**
- **Ecological Health Project**
- **Large carnivore trend monitoring**
- **2012 Tribes/First Nations Forum?**
- **Relationships/Coordination with other Crown initiatives**
- **Aquatic Invasives Guide**
- **CMP operations/website**
- **Climate Change?**
- **Engagement Strategy?**



The End

