

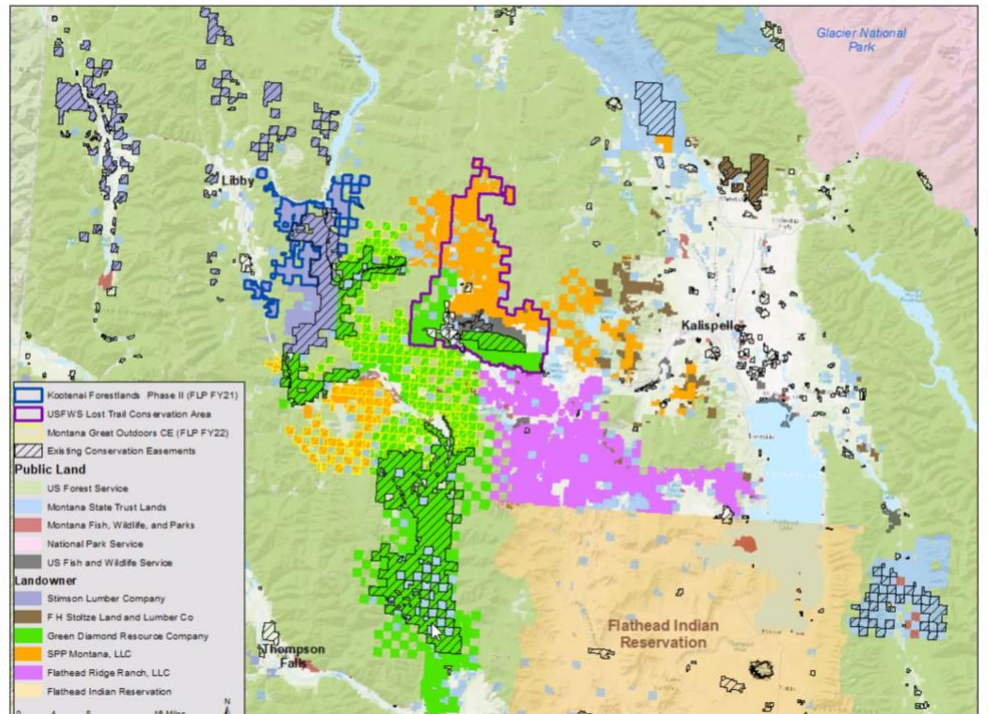
Attendees: Sean Finn, Chad Willms, Anne Carlson, Brooke Kapeller, Constanza von der Pahlen, Kathy Zeller, Kris Temple, Linh Hoang, Mary McFadzen, Richard Klafki, Natalie Poremba, Harvey Locke, Tara Carolin, Alisa Wade, Kelly Cooley, Mike Durglo, Aubin Douglas, Amy McLeod

- LCD Updates [Sean]
 - Phase One Report almost done
 - Primarily drafted by Analysis team
 - This is an interim report - posted to website and emailed to the leadership team; it is shareable to networks - we are just documenting our process (keeping transparent and allowing interested folks to catch up)
 - Social, Cultural & Economic Feature Sub-Team
 - 2nd call 6/25 to select features
 - Scheduled to meet once more in July - will report out to leadership team in the august call
 - Goal of this team is to select the features to add into the LCD Design - later, we will consult with subject matter experts once these features are selected
 - Q: are there any gaps that you need to fill?
 - May point this back to the LT - seems like we are well rounded - some absence from BC
 - Might consider engaging Wildsight (Kimberly) - Harvey can help make contact with Robin the Executive Director
 - Mike D: has anyone reached out to Mike Bruised Head?
 - We are in the initial phases of reaching out
 - Ktunaxa Nation involvement
 - We have social scientist, Indigenous folks, community leaders
 - Funding Update
 - The Wilderness Society - \$15,000 to support Indigenous governments to lead the identification of cultural priorities for the LCD
 - Sorting out the routing of funds
 - Discussions on the processes for engaging Indigenous governments - one Tribal elder and Technical
 - Q: Has there been any outreach to the Ktunaxa Nation?
 - Right now, still having very early stage conversations - still understanding what this might look like and how it might look different for different First Nations
 - Total agreement
 - USFWS - FY \$25,000 - funds to support Natalie and Phil's position, and an in-person get together towards end of the calendar year
 - Total cash funds around \$179,000
 - Not just money, but the priceless In-kind - thank you all!
 - LT Call Summer Schedule
 - 6/25: Kris Temple

- 7/27 Mary McClelland
 - 8/29: Kelly Cooley
 - 9/28 Chad Willms
 - Harvey Locke: offer to give a presentation about 30x 2030 . the recent G7 Leaders’ Nature Compact by President Biden and Prime Minister Trudeau and the G7 Env Minister’s statement that preceded it are directly relevant to this work. They fit into a larger picture.
- News from the Field
 - Chad Willms - coal development in AB Province - there is coal interest in Crowsnest Pass - gov’t is providing updates from coal policy from 1976 - Grassy Mt Project; due to the size of it, went to a joint review panel - not in public interest due to the significance of environmental impact - a bit precedent setting for other companies
 - Part of the reason for the turn down is WSCT and WBP - and selenium/water quality; More can be read [here](#)
 - “The panel concluded that the project is likely to result in:
 - •significant adverse environmental effects on surface water quality, westslope cutthroat trout and its habitat, whitebark pine, rough fescue grasslands, and vegetation species and community biodiversity; and
 - •significant adverse effects on physical and cultural heritage of some First Nations.
 - In its capacity as the AER, the panel determined that the adverse environmental effects on surface water quality and westslope cutthroat trout and its habitat outweigh the positive economic impacts of the project and the project is not in the public interest. The panel has denied Benga's applications under the Coal Conservation Act and related applications under the Environmental Protection and Enhancement Act, Water Act, and Public Lands Act.”
 - Deficient on invasive plant planning as well - a lot of adaptive type management verbiage
 - This mine is one of the many proposed for eastern slope - huge concern about selenium; lots of anxieties about water quality/selenium - Especially given Elk Valley
 - Heavily discussed - highest profile envtal issue in AB; top of the mind
 - Community Response
 - Significant controversial decision within community of Crowsnest Pass - historical mining community - some people were furious about this decision
 - Mike Durglo is working with NPS Tribal ENGagement - provided funding for SKC intern to have a summer internship at GNP - interviews with Blackfeet and Salish Kootenai elders; identified sites for that intern to revisit - [GNP Ice Patch](#) - last time they went up was in 2009 - will be interesting to see what has changed since then - look at culturally marked trees

- 20 years of habitat conservation in northwest Montana [Kris Temple]
 - Kris - Habitat Conservation Biologist with FWP
 - Presentation is about protecting species, but also public recreation access
 - History of FWP
 - Providing public rec opportunities for a long time - dating back to 1935
 - In 1987, Habitat MT - House Bill 526
 - Consistent funding, hunter licence dollars - prioritized conservation easements (a voluntary legal agreement that precludes certain uses of land in order to protect its specific conservation values)
 - Focusing on Region 1 of FWP - NW MT
 - Federal Programs through FWP:
 - Forest Legacy Program (USFS)
 - Cooperative Endangered Species Conservation fund (USFWS)
 - In the 90s...
 - Landscape from Kalispell to ID border was basically private land, but public access (working forest)
 -
 - early 2000s
 - Thomas Fisher Conservation Easement - focused on protecting low elevation winter range
 - Swan Valley Project - part of a much larger project called the MT Legacy Project -
 - 2012 - Kootenai Valleys Conservation Easement - around Troy MT
 - 2015-2018 - Haskill Basin - protecting drinking watershed; Upper Whitefish Watershed
 - 2019 - Kootenai Forestlands CV - around Libby - not just sewing up these holes in connectivity, but also helping to reduce human, wildlife conflict and wildfire conflict
 - 2020 - Lost Trail Conservation Easement - elk migration, grizzly connectivity - in the middle of this project, Weyerhaeuser announced that they were selling all of their land - sold to Southern Pine Plantations; luckily, SPP wanted to continue with Lost Trail Project
 - 230,000 acres of public recreation access as of 2020
 - Working on 2021:
 - Kootenai Forestlands Phase 2 Conservation Easement - another stimpson CE
 - Bad Rock Canyon Wildlife Mgmt Area - would be an acquisition from Columbia Falls Aluminum Company - used by grizzlies, Bull Trout overwinter
 - Working on 2022 and beyond:
 - MT Great Outdoors Project
 - Rapidly Changing Landownership

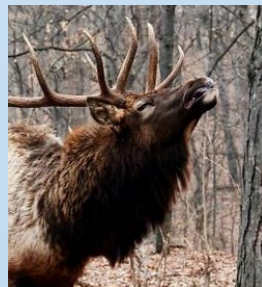
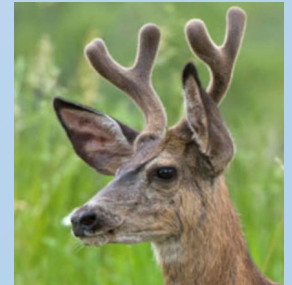
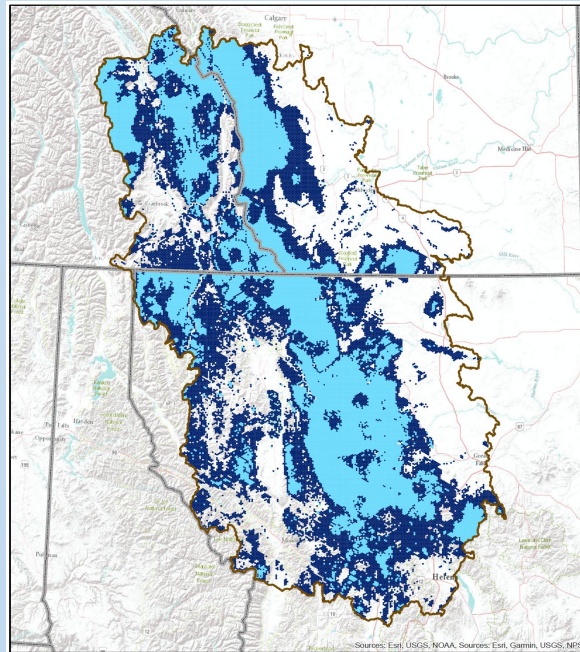
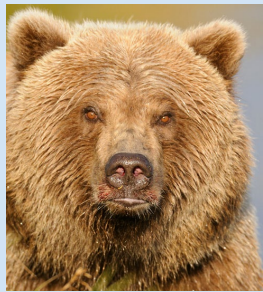
- Southern Pines wanted to send a certain number of acres in a year - 291,000 acres to green diamond resource company (timber company based in the west)
- American Forest Mgmt is the group mainly managing the forests for these companies (Green Diamond, Mark Jones)




■ Questions:

- When you say forest companies own the land, do they have ownership of the land or just the resource?
 - In the states, the companies own the land, just like a private land owner does - sometimes underlying minerals are severed
 - So, these companies could sell it to whoever they want; they also have direct control over public access - in CEs, say that they have to allow public access in any way that is not degrading the resource
- Is the spatial data for the Conservation Easements on FWPs data website?
 - Some of it - partners provide different data; some sensitive data (ie radio collar data) is limited
- Fisher surveys?
 - There is a biologist looking at this - anne, if you are interested, Kris can put you in touch with Jessie Coltrane
- Next Meeting July 27th!

Crown of the Continent Landscape Conservation Design



First Draft Full Model		Aquatic Forest	Wetlands	Wolverine
 Retain 30%	Grassland	Bull Trout	Canada Lynx	
 Retain 70%	Riparian	Cutthroat Trout	Elk	
	Shrubland	Grizzly Bear	Mule Deer	
		Whitebark Pine		

Leadership Team call

22 June 2021

Today's Agenda:

- LCD Updates [Sean]
 - Phase One Report almost done
 - Social, Cultural & Economic Feature Sub-Team
 - Funding Update
 - LT Call Summer Schedule
- News from the Field [All]
- 20 years of habitat conservation in northwest Montana [Kris Temple]

Phase One Report

Crown of the Continent LCD

Phase One Technical Report

Contents

Contents	1
Introduction	2
Goals of Optimization Modeling and its Role in Conservation Design	2
Data Resources	3
General Data Handling and Scoring for Marxan	3
Initial Technical Review	4
Specific Process Steps for Features	6
Feature: Landcover	6
Feature: Elk (<i>Cervus canadensis</i>)	9
Feature: Mule Deer (<i>Odocoileus hemionus</i>)	15
Feature: Bull Trout (<i>Salvelinus confluentus</i>)	20
Feature: Westslope Cutthroat Trout (<i>Oncorhynchus clarkii lewisi</i>)	24
Feature: Whitebark Pine (<i>Pinus albicaulis</i>)	28
Feature: Wolverine (<i>Gulo gulo</i>)	31
Feature: Canada Lynx (<i>Lynx canadensis</i>)	34
Feature: Grizzly Bear (<i>Ursus arctos horribilis</i>)	37
Synthetic Optimization Models (all features)	40
General Conclusions and Discussion	40
Lessons Learned and Transition to Phase Two	41
Citations	41

Figure 7: Elk input source data (Montana, British Columbia, Alberta)

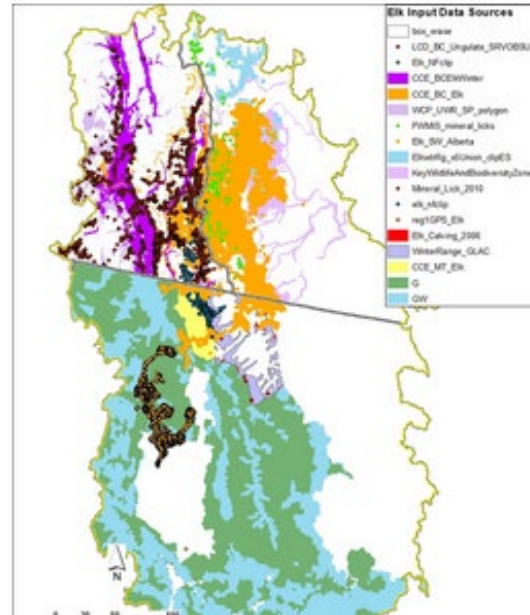
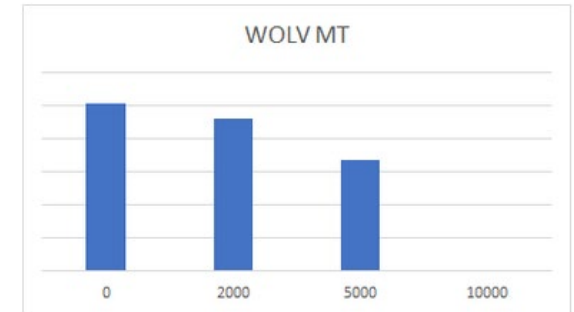
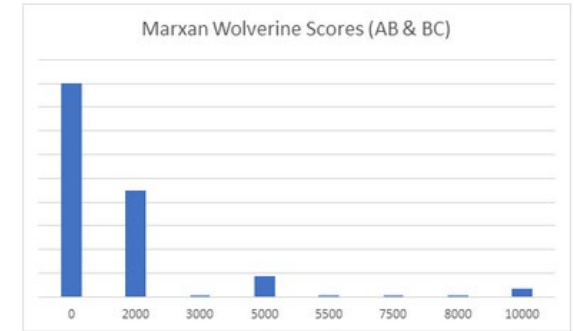


Figure 25: Histogram of scoring for Wolverine by jurisdiction.



Lessons Learned and Transition to Phase Two

- Expanding the Project Area beyond the CMP's formal definition of the Crown of the Continent Ecosystem (CCE) led to data challenges. One potential solution is to constrain Phase Two analyses to the CMP definition of CCE.
- As expected, variation among data describing focal ecological features on either side of the Canada-US boundary is quite disparate.
 - In many cases data from the US side (wholly within the state of Montana) is relatively consistent due to consistent occupancy models provided by MTNHP.
 - Data acquired from Alberta and British Columbia tended to be from more diverse sources. Some data was consistent across the provincial boundary (and even south into MT). Other data were restricted to a province (i.e., data from Alberta Environment and Parks) or to a researcher's study area.
- Our data collection for some features is spatially incomplete. For example, we did not uncover or acquire data for grizzly bear observations or models for the NW portion of the Project Area (Yaak and Purcell areas). These kinds of data inadequacies severely limit the utility of optimization models.
- Riparian (especially) and wetlands data from the single landcover source (CEC 250 m resolution) is inadequate. Seek finer resolution riparian data and use the CEC 30 m data for wetlands in Phase Two.
- All data shortcomings will be discussed and pursued with subject matter expert teams.

97 source datasets vetted
 60 datasets used for Phase One
 13 Features modeled
 Report reviewed by Technical Team
 Many lessons learned

Social, Cultural & Economic Feature Sub-Team

- Met once in May
- 2nd Call on Friday (25 June)
- Scheduled to Report out in August

SCE Team:

- Kelly Cooley
- Mike Durglo
- Elliot Fox
- Brooke Kapeller
- Mary McClelland
- Natalie Porembe
- Mary Riddle
- Connie Simmons
- Amber Zary



Funding Update

US Fish and Wildlife Service:

- FY21 --- \$25,000
- FY20 --- \$97,271
- FY19 --- \$41,831

• **Total funds: \$179,102**

• **Total In-kind: Priceless**
(Leadership Team, Technical Team,
Subcommittees, Experts)

The Wilderness Society

- \$FY21 --- \$15,000
- “to provide support for Indigenous governments (CSKT, the Blood/ Kainai, Piegan and Blackfeet) to lead the identification of cultural priorities for the collaborative Landscape Conservation Design in the Crown of the Continent”

Summer Leadership Team Schedule

- June 25: Kris Temple, Montana Fish Wildlife and Parks
 - A bear walks through it: 20 years of habitat conservation in northwest Montana
- July 27: Mary McClelland, West Glacier
 - West Glacier Vision Plan
- August 29: Kelly Cooley, CoolPro Solutions
 - Recreation Access Management
- September 28: Chad Willms, Alberta Environment and Parks
 - Conservation Planning in SW Alberta

News from the Field



A bear walks through it: 20 years of habitat conservation in northwest Montana



Photo Credit: @kestrelaerial.com

Kris Tempel

Habitat Conservation Biologist

Montana Fish, Wildlife & Parks - Region One

