



Crown Managers
Partnership



Regional Trans-Boundary Collaboration in the Rockies:

Crown Managers Partnership



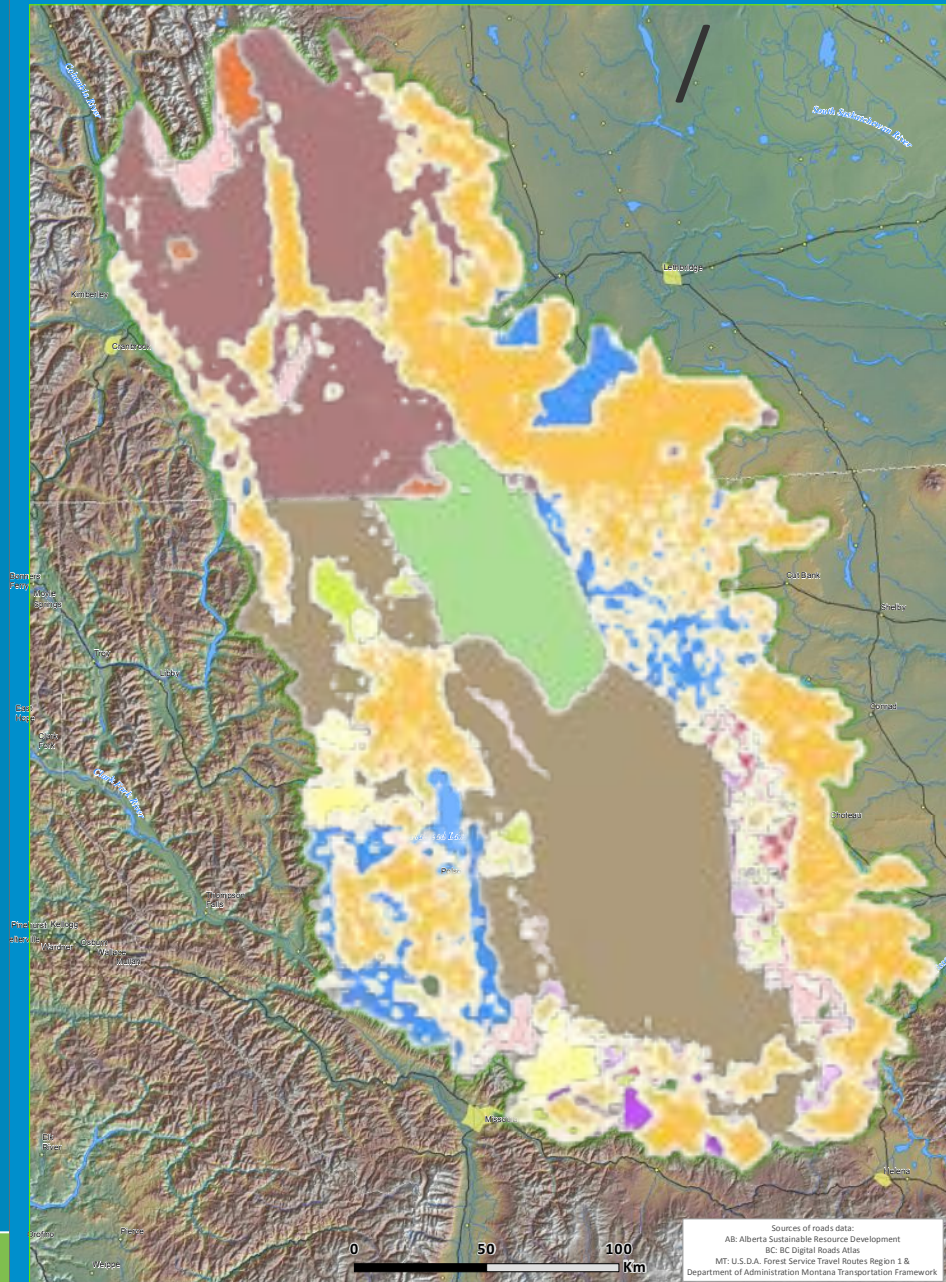


Crown of the Continent Ecosystem

- Large, intact ecosystem
- High profile setting
- Unique attributes
- Peace Park at core
- Highly valued

CCE Jurisdictions

First Nations/Tribal land
National Parks
US Bureau of Land Management
US Fish & Wildlife
US Forest Service
Federal
Provincially Protected Areas
State Trusts
Montana Fish, Wildlife, & Parks
Provincial/State
Private Conservation Land
Plum Creek Timber
Private Land



CMP Modus Operandi

Structure:

- Cooperative agency partnership (CMP doesn't manage, agencies do)
- Participants: federal, state and provincial agencies, tribes and First Nations, educational institutions
- Steering Committee and Secretariat

Guidance:

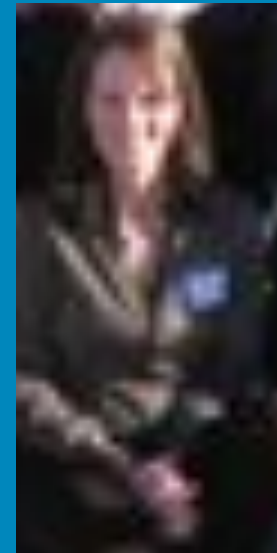
- Strategic Plan
- Annual Forums based on themes
- Annual Workplan
- Projects

CMP Steering Committee 2013

- Mary Riddle (Chair): US National Park Service - Glacier National Park
- Dennis Madsen: Parks Canada - Waterton Lakes National Park
- Len Broberg: University of Montana
- Mike Quinn: Mount Royal University, Calgary
- Greg McDermid, University of Calgary
- Bill Dolan: Alberta Tourism, Parks and Recreation
- Ian Dyson, Alberta Environment & Sustainable Resource Dev
- Jon Jorgenson, Alberta Environment & Sustainable Resource Dev
- Caryn Miske: Flathead Basin Commission
- Erin Sexton: U of Montana - Flathead Lake Biological Station
- Rob Davies: US Forest Service - Flathead National Forest
- Steve Frye: Montana Dept of Natural Resources and Conservation
- Mike Munoz : US Forest Service – Lewis & Clark National Forest

Secretariat:

Sasha Harriott



Crown Managers Partnership Forums

- April 2002, Whitefish: Cumulative Effects
- April 2003, Pincher Creek: ALCES
- Feb 2004, Cranbrook: Fire
- March 2005, Kalispell: Invasive plants
- March 2006, Lethbridge: Watershed Partnerships
- March 2007, Cranbrook: Ecological Health
- March 2008, Whitefish: Carnivores
- Feb 2009, Pincher Creek: Biodiversity
- April 2010: Fernie: Climate Change
- March 2011 Polson: Aquatic Invasive Species
- March 2012: Lethbridge: Tribes and First Nations



Challenges

- increased human activity
- urban and rural residential expansion
- increased and diversifying recreational use
- intensified demands for resource use and extraction

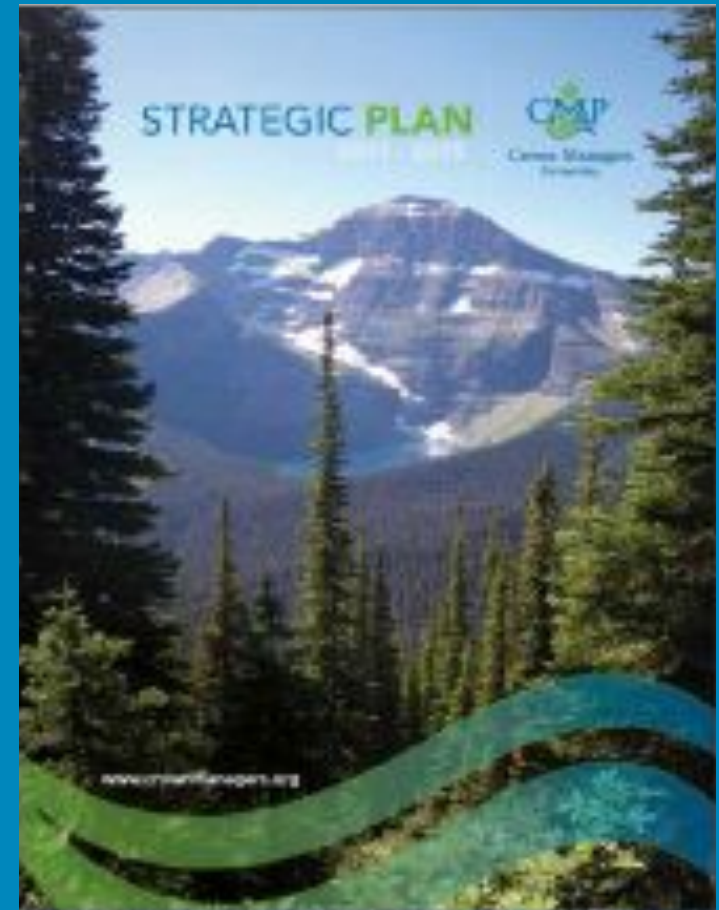
Different intensities at different locations throughout the Crown of the Continent

Ecological Health Project (EHP)

- 2011 Strategic Plan value proposition:

“ We will collectively develop defined measures of ecological health and the adaptive capacity to meet them, across borders, amongst jurisdictions and with stakeholders by the end of the decade.”

- The EHP is the CMP’s flagship enterprise.



Managing for Ecological Health

WHY?...

- Societal expectations
- Downstream implications
- Trans-boundary commonalities
- Agency mandates
- Place operational activities and priorities in a regional context

BENEFITS....

- many challenges are happening at the scale of the Crown, not locally
- reduce duplication of efforts
- break down jurisdictional boundaries and improve communications
- learning from others successes and failures
- products derived contribute to other initiatives

Indicators of Ecological Health

- Landscape
- Biodiversity
- Water quantity and quality
- Invasive Species
- Climate
- Air quality
- Cultural value



Indicators of Ecological Health

- Landscape
- Biodiversity
- Water quantity and quality
- Invasives
 - Terrestrial
 - Aquatic
- Climate
- Air quality
- Cultural value



Indicator - Aquatic Invasives

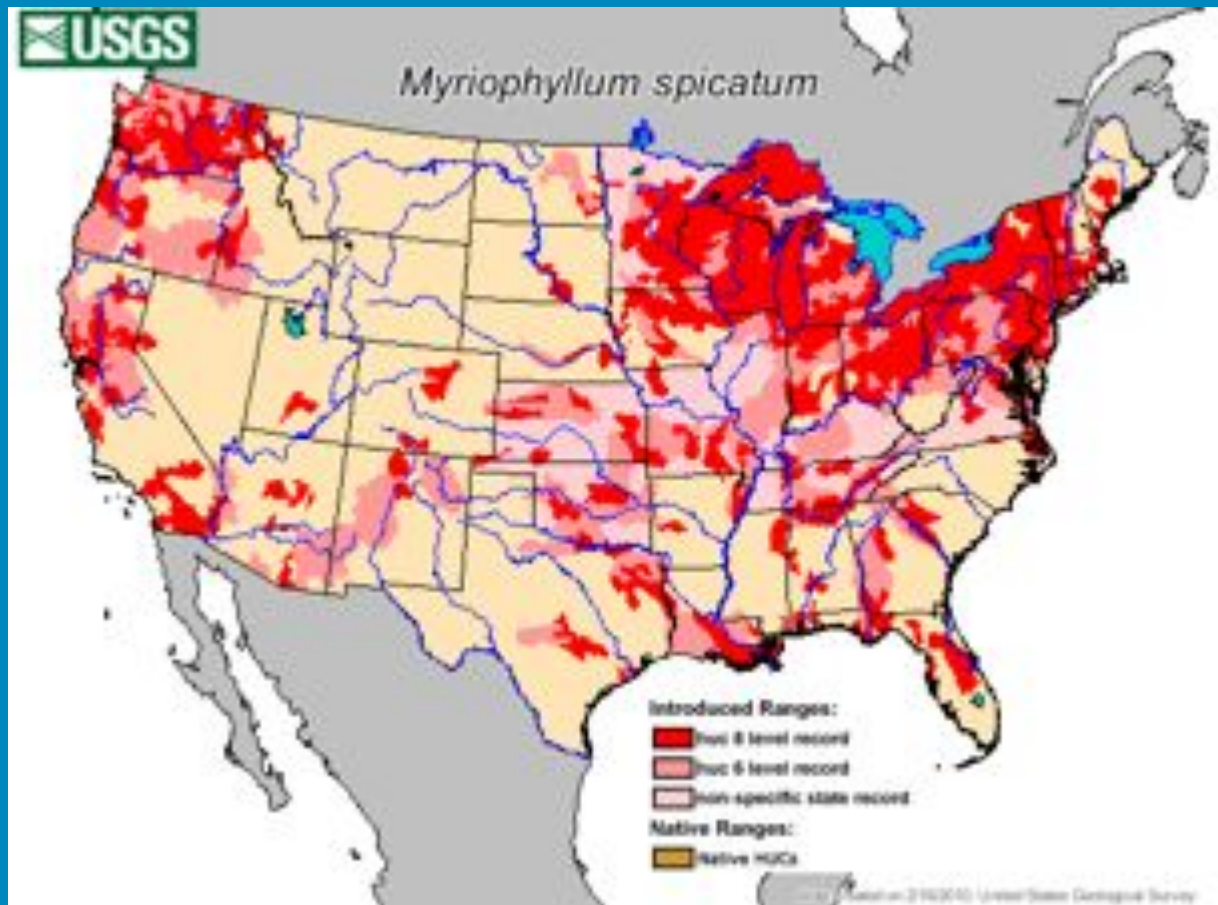
- KISS
- Indicator: Two mussels and a weed.
- Outcome: keep as is. Absence indicator.





Eurasian Watermilfoil

- 1 wisp = 250 million new plants annually



Invasive Mussels!

- Quagga and Zebra
- Native to Black/Caspian seas
- Discovered in North America in 1988
- East Coast and Midwest infestations



Zebra and Quagga Distribution USA



AIS Impacts

- **Economic**
 - Clog dams, irrigation, hydro
 - Capital and maintenance costs
 - Reduced property values
- **Social**
 - Shorelines and beaches ruined
 - Fisheries destroyed
 - Recreational values impaired
- **Environmental**
 - Outcompete native vegetation
 - Destroy Fish and wildlife habitat
 - Reduce biodiversity



AIS – Moving from Awareness to Action

- Agency/stakeholder awareness
 - MT action
 - 2011 CMP Forum
- CMP AIS Indicator – 3 species
- CMP Outcome – prevention/absence in CCE
- MT leadership in CMP (FBC, GNP)
- AB engagement and leadership
 - Waterton Lakes NP
 - TBDG
 - Waterton Stakeholder Meeting



Management Strategy

- Education and Engagement
- Policy, Planning and Legislation
- Inspections
- Monitoring & Response



Process: Indicators to Action



- Identify indicator and outcome.
- Start with one jurisdiction (Montana)
- Develop a regulatory and non-regulatory strategy to achieve
- Seek concurrence of participants
- Develop strategies in other jurisdictions
- Formalize (Trans-Boundary Management Protocol MoUs)
- Monitor indicator
- Next Indicator



3rd Annual Conference

Roundtable on the Crown of the Continent

Connecting people to sustain and enhance culture, community, and conservation

CCE...a busy landscape

Pre CMP (2001)

- W-G IPP
- COCEEC
- Crown of
Continent Data
Atlas (Miistakis)

Post CMP

- CoC Geotourism project
- Crown Roundtable
- CoC Conservation Initiative
- Landscape Conservation
Cooperatives
- America Great Outdoors (AGO)



Great Northern
LANDSCAPE CONSERVATION COOPERATIVE





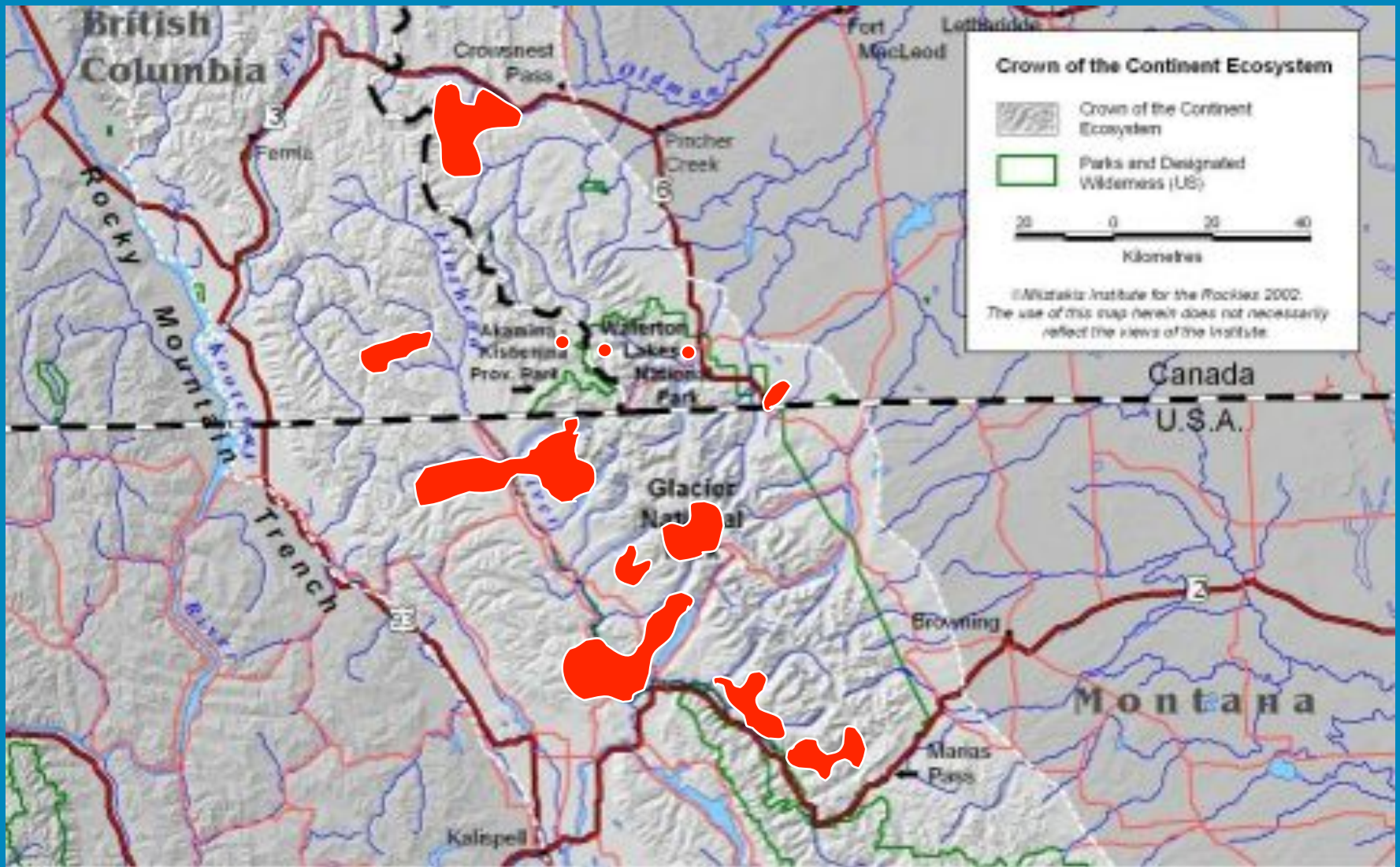
Questions?



Crown Managers
Partnership

CMP 2011-12

- **New Strategic Plan**
- **Ecological Health Project**
- **Large carnivore trend monitoring**
- **2012 Tribes/First Nations Forum?**
- **Relationships/Coordination with other Crown initiatives**
- **Aquatic Invasives Guide**
- **CMP operations/website**
- **Climate Change?**
- **Engagement Strategy?**



Wildfire Activity in and around Waterton-Glacier IPP - 2003

Waterton Park Front project Projet du Front Waterton	
Waterton Lakes National Park Parc national des Lacs-Waterton	
Grizzly Bear Home Ranges Grizzly Bear Home Ranges	

