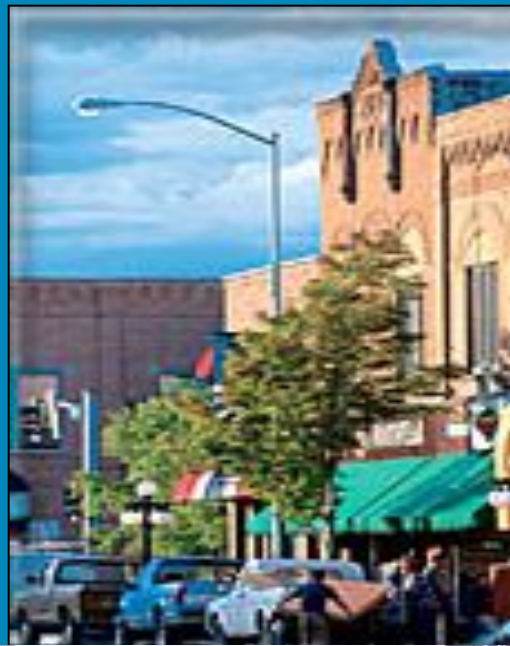
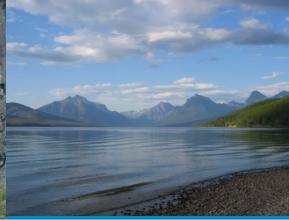




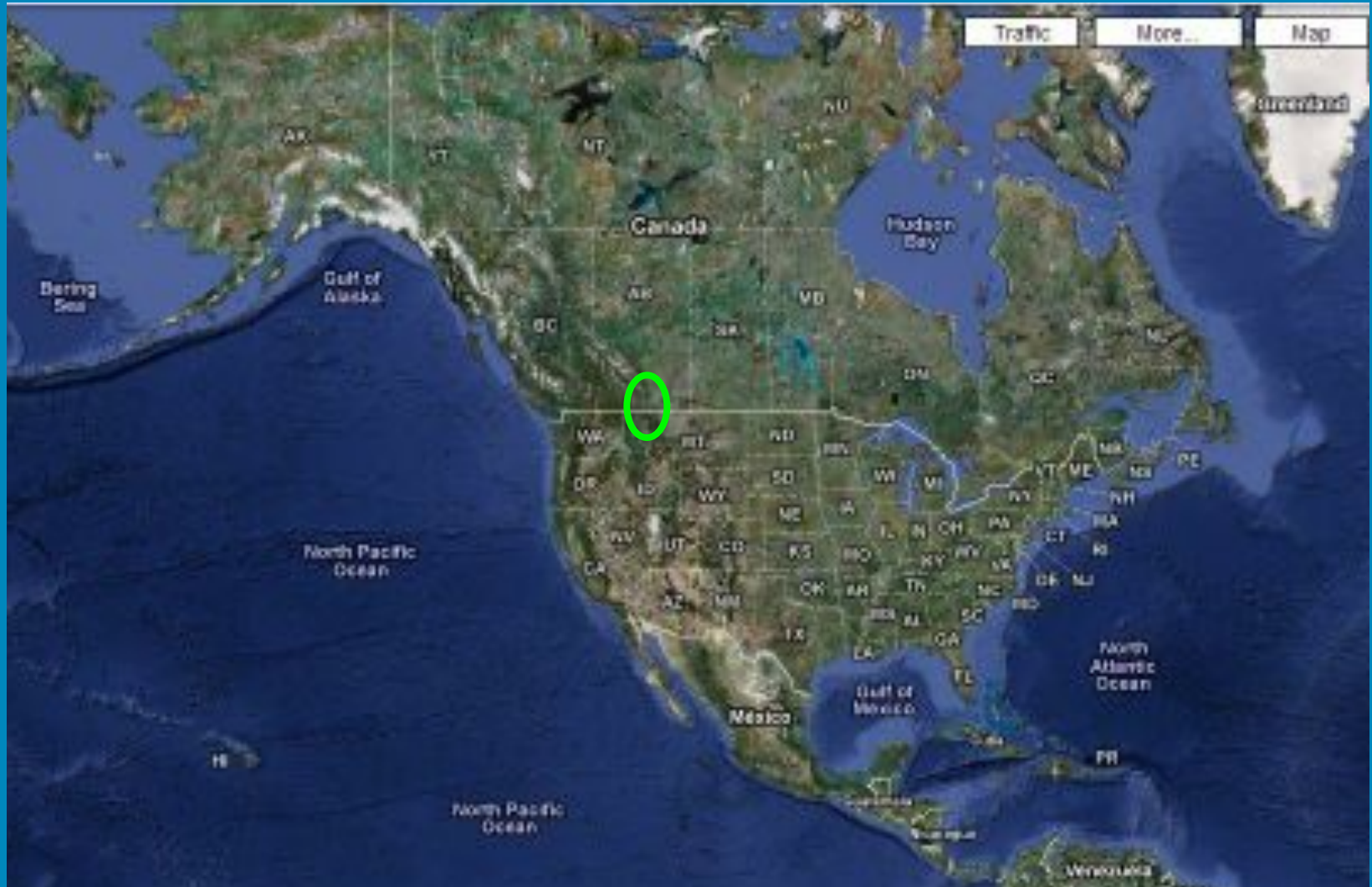
Crown Managers  
Partnership



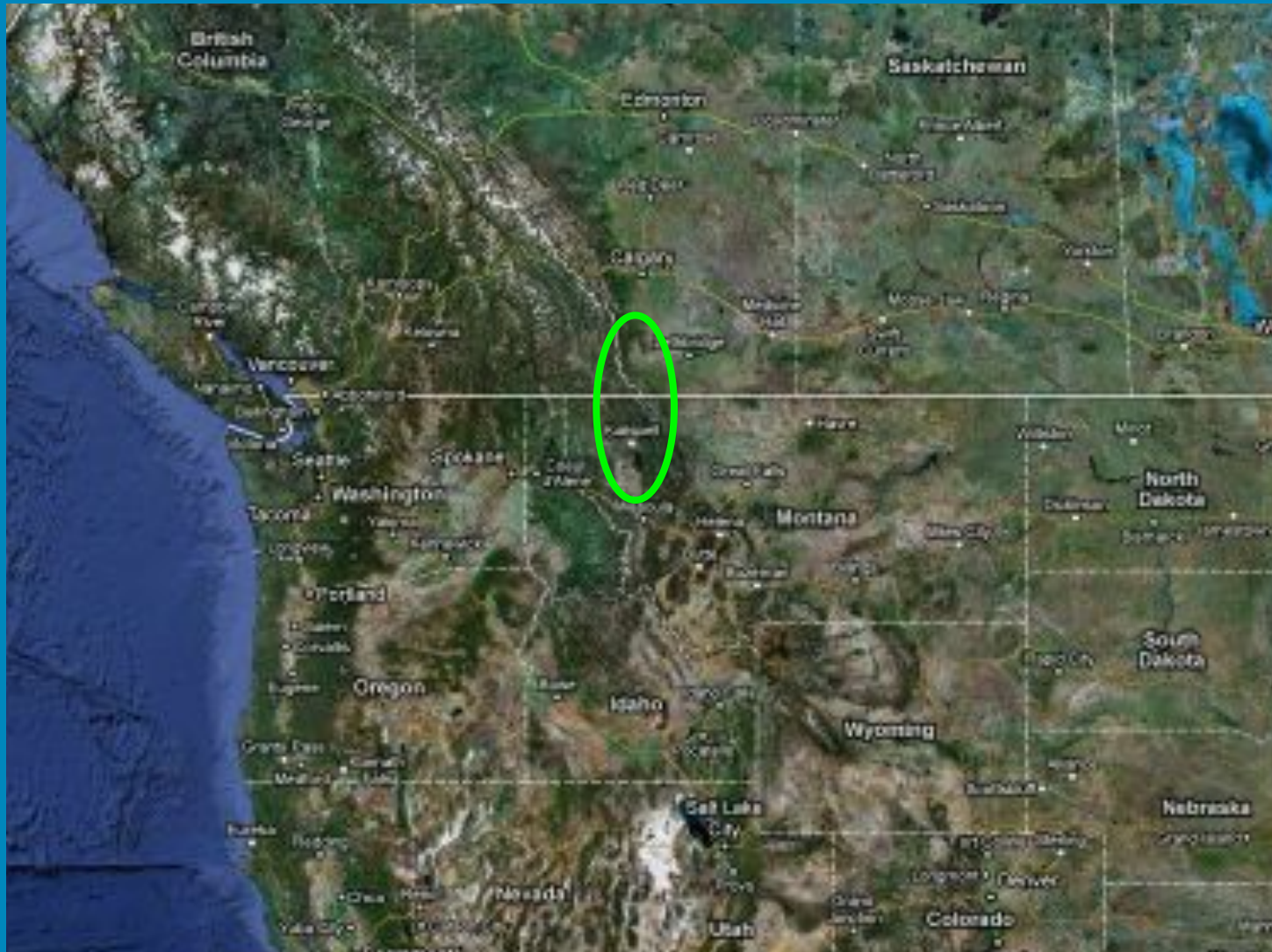
# 2010 Annual Forum, Fernie, B.C.



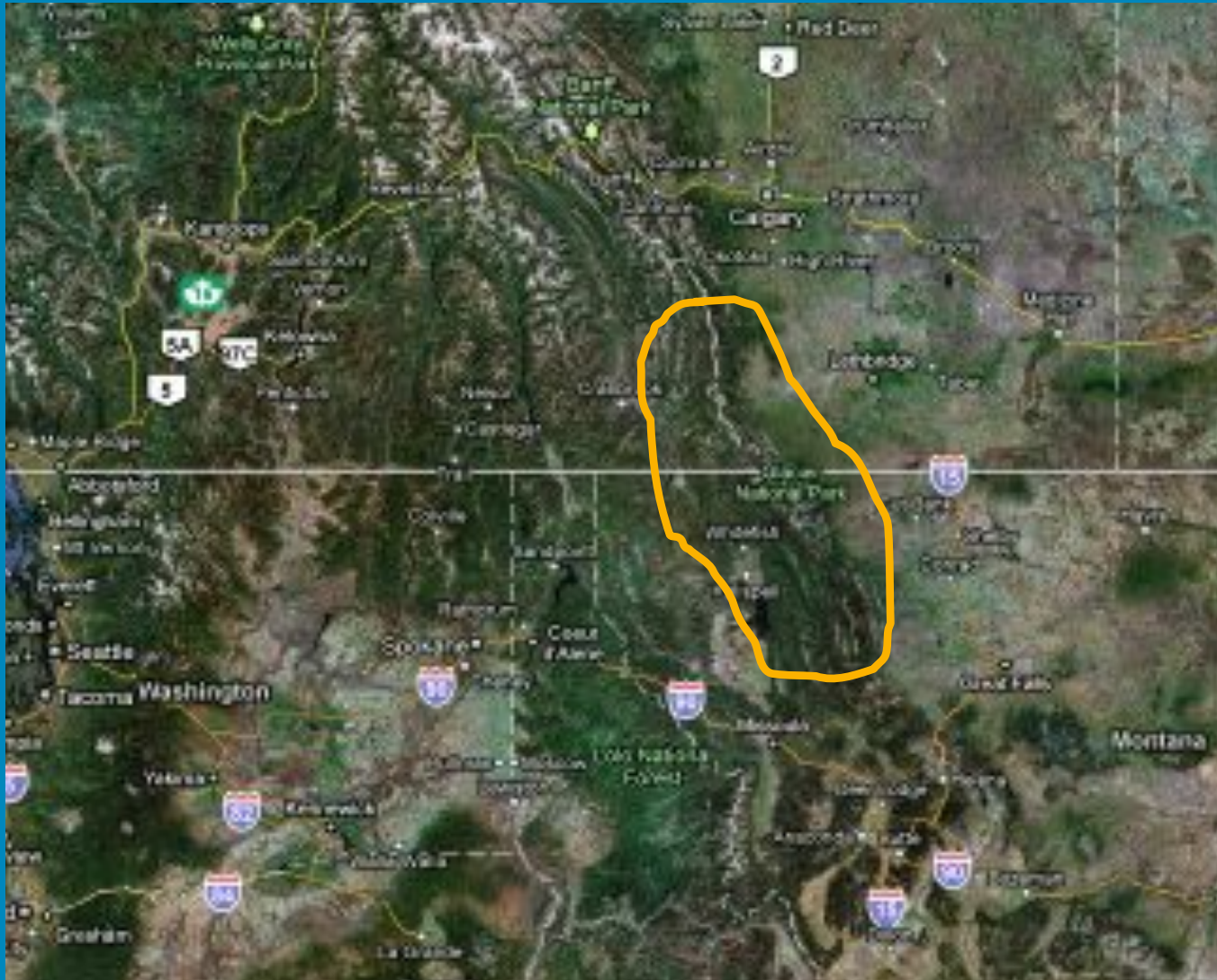
# Not Just Another Place...



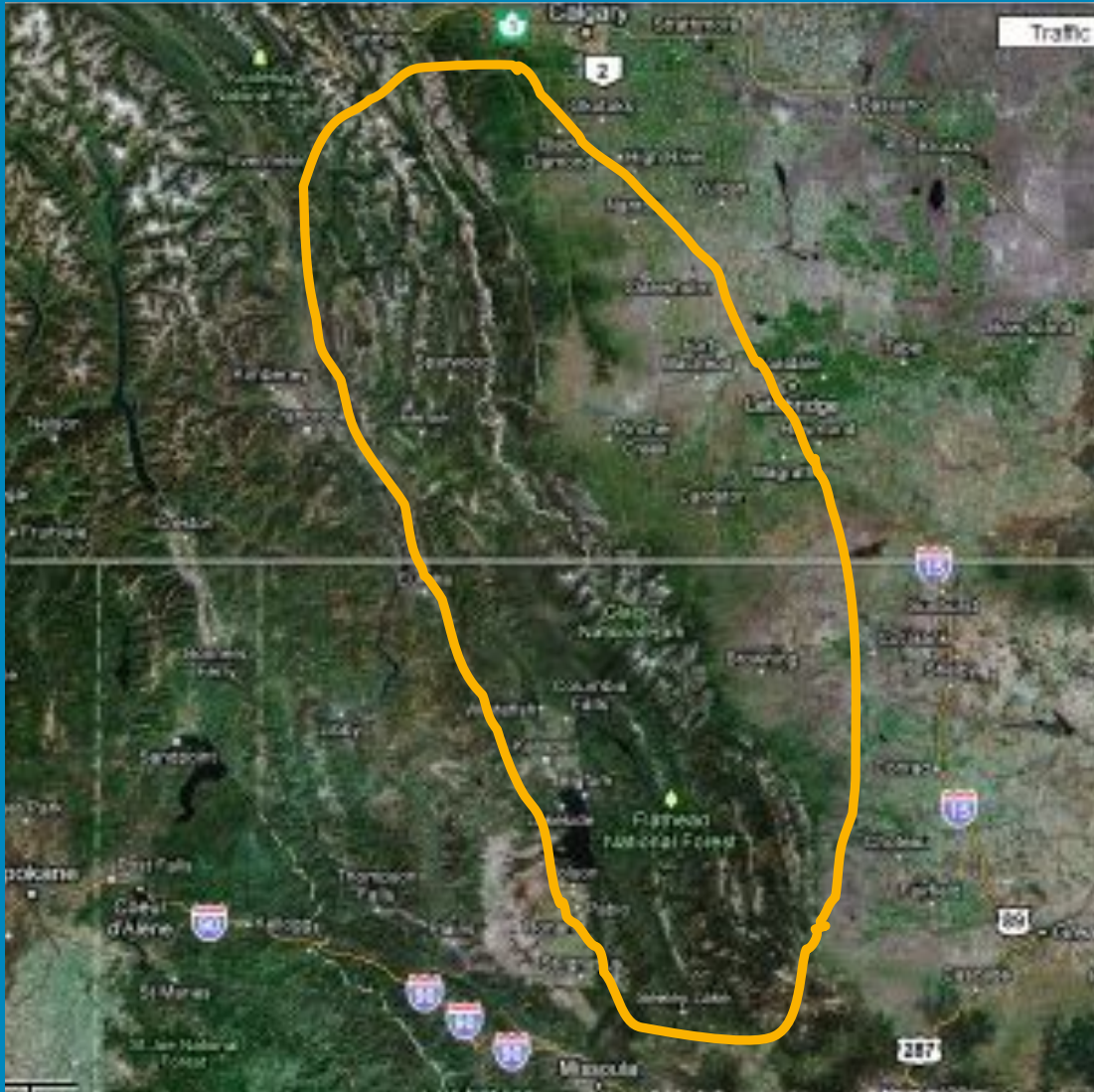
# Not Just Another Place...



# Not Just Another Place...



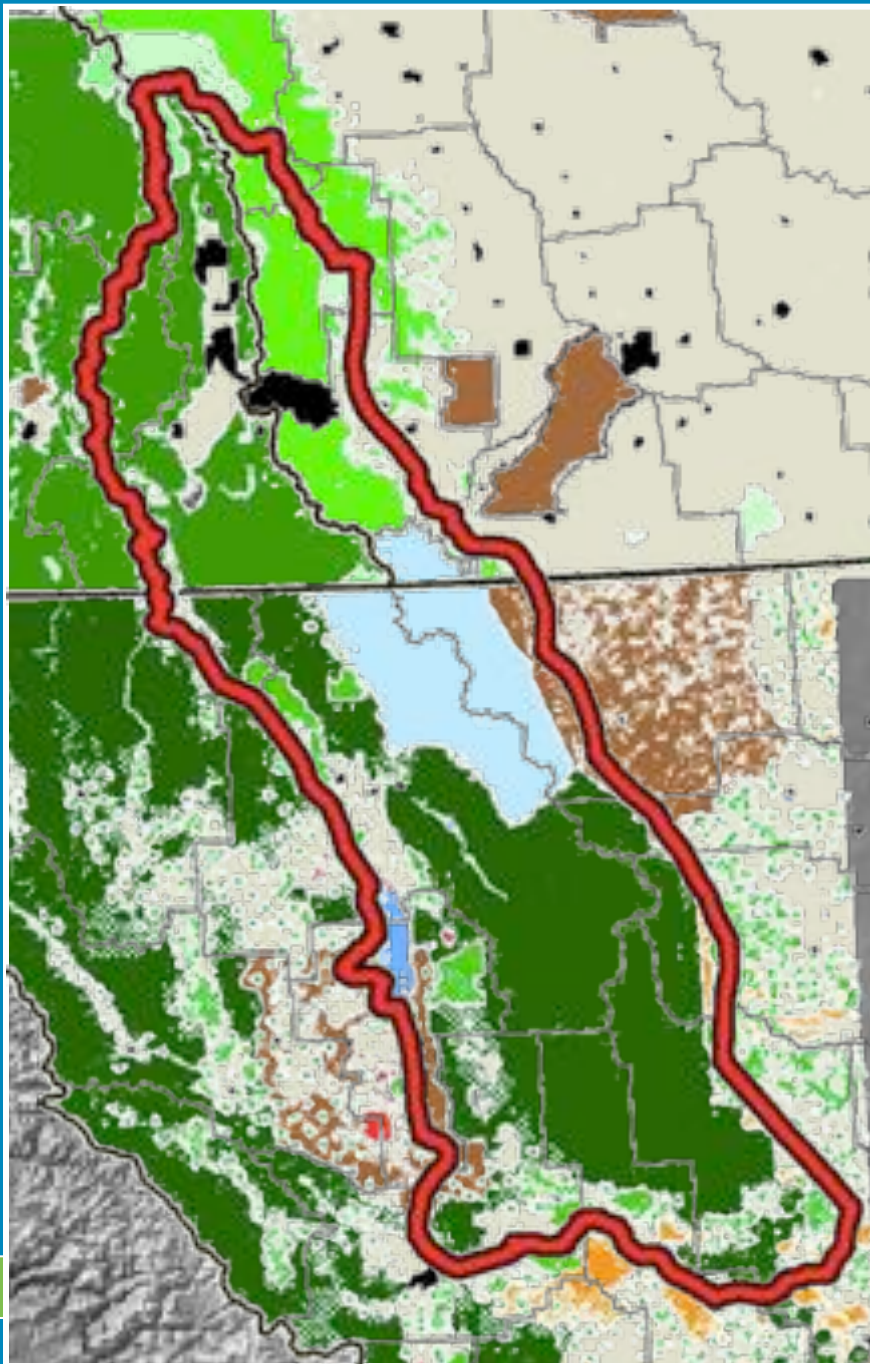
# Not Just Another Place...



# Crown of the Continent Ecosystem



- Large, intact ecosystem
- High profile setting
- Unique attributes
- Peace Park at core
- Highly valued



First Nation / Tribal Lands  
Parks Canada / U.S. National Parks Service  
B.C. Ministry of Environment  
Alberta Community Development  
B.C. Ministry of Forests  
United States Forest Service  
Alberta Sustainable Resource Development  
United States Fish and Wildlife  
Montana DNRC (State Forests)  
U.S. Bureau of Land Management  
Private Land  
Counties / MDs / Regional Districts  
Cities / Towns / Villages

# Jurisdictional Complexity

# Crown Pressures

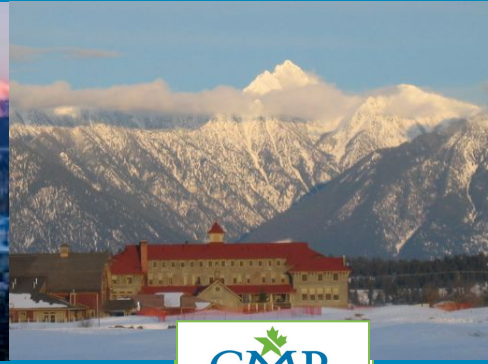
- Climate Change
- Invasive weeds
- Fire Management
- Urban and rural residential development
- Tourism and recreational use
- Resource use and extraction
- Environmental Quality
- Water Quality, quantity, fisheries, aquatics
- Wildlife habitat – fragmentation and loss
- Degradation of ecosystem goods and services



# Crown Managers Partnership History

## Cranbrook 2001:

- Cumulative effects of human activity
- Increased public interest in land
- Recreational and visitation demands
- Shared data and monitoring
- Maintenance and sustainability of shared wildlife populations



# Crown Managers Partnership History

- April 2002, Whitefish: Cumulative Effects
- April 2003, Pincher Creek: ALCES
- Feb 2004, Cranbrook: Fire
- March 2005, Kalispell: Invasive plants
- March 2006, Lethbridge: Watershed Partnerships
- March 2007, Cranbrook: Ecological Health
- March 2008, Whitefish: Carnivores
- Feb 2009, Pincher Creek: Biodiversity
- April 2010: Fernie: Climate Change



# CMP Modus Operandi

## Structure:

- Cooperative agency partnership (CMP doesn't manage, agencies do)
- Participants: federal state and provincial agencies, tribes and First Nations, educational institutions
- Steering Committee

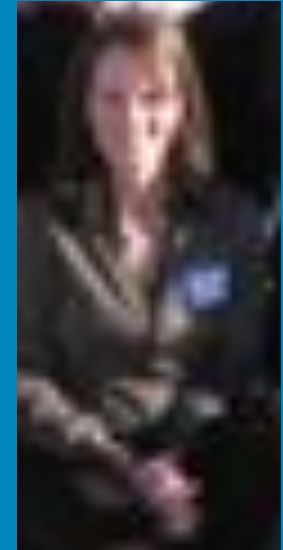
## Guidance:

- Strategic Plan
- Annual Forums based on themes
- Annual Workplan
- Projects

# CMP Steering Committee

- Bill Dolan: Alberta Tourism, Parks and Recreation, AB
- Mary Riddle: Glacier National Park, MT
- Dennis Madsen: Waterton Lakes National Park, AB
- Len Broberg: University of Montana, MT
- Mike Quinn: University of Calgary, AB
- Al Soobotin/Tom Bell: B.C. Ministry of Environment, B.C.
- Caryn Miske: Flathead Basin Commission, MT
- Erin Sexton: Flathead Lake Biological Station, MT
- Jimmy DeHerrera: Flathead National Forest, MT
- Steve Frye: Dept of Natural Resources and Conservation, MT
- Rick Blackwood, Alberta Sustainable Resource Development, AB
- Ian Dyson, Alberta Environment, AB

**Coordinator:**  
**Sasha Harriet**



# CMP Strategic Plan (2006)

**Vision:** An ecologically healthy Crown of the Continent Ecosystem

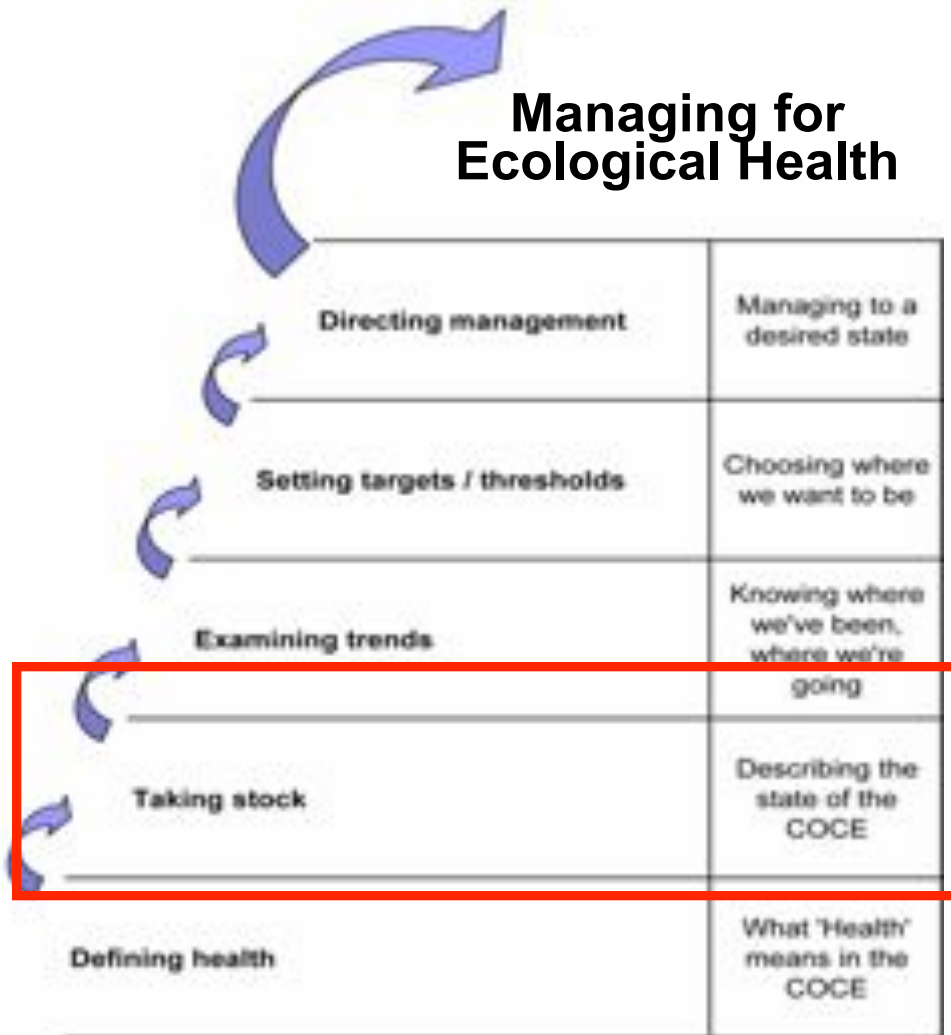
**Mission:** A diverse group of agencies working together to achieve the vision by:

- Building an understanding and awareness of the ecological health of the Crown ecosystem
- Building enduring relationships and collaborating across mandates and borders

# Ecological Health Project

- Long-term, multi-faceted project aimed at defining a level of ecological health that can inform agencies' management;
- Multi-year strategic priority for CMP;
- Establish an indicators-based, environmental outcomes approach

# Managing for Ecological Health



# Drowning in Information

Nitrates

Protozoa

Salinity

Ozone

Road Density

Carbon Storage

Noxious Weeds

Suspended sediment

Riparian Health

Primary productivity

Turbidity

Old growth

Ammonia

Pesticides

Species Abundance

Particulate Matter

Dissolved Phosphorus



Range Health

Fecal Coliforms

Sulfur Dioxides

Species Distribution

Dissolved Oxygen

Native Vegetation

Nitrogen Oxides

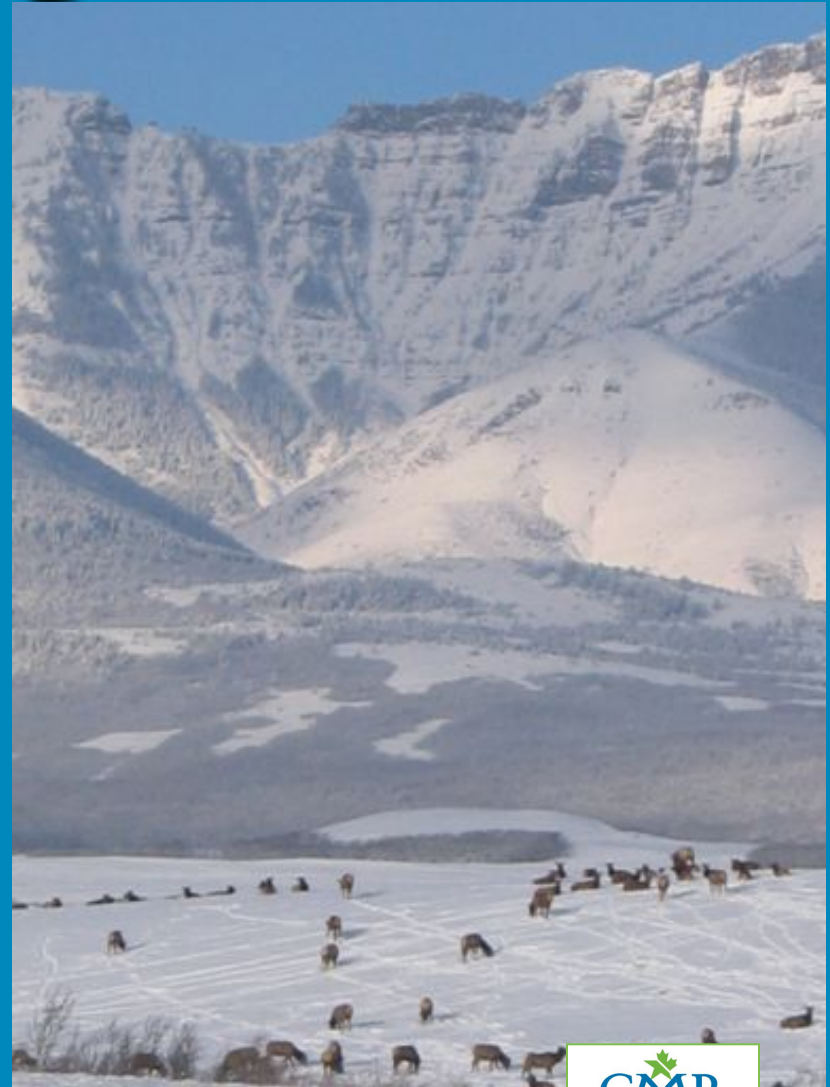
Soil Organic Matter

Loss of Species

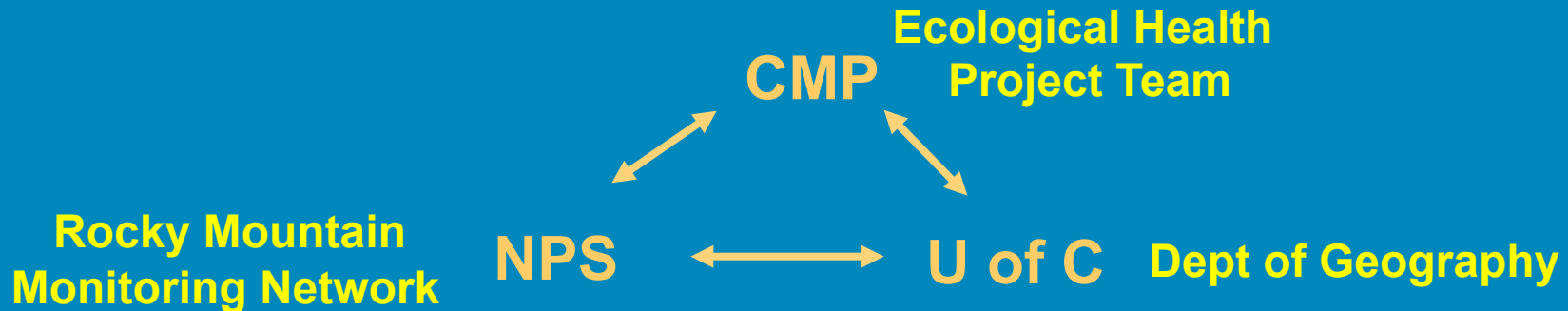


# Indicators of Ecological Health

- Landscape
- Biodiversity
- Water quality and quantity
- Exotics
- Climate
- Air quality

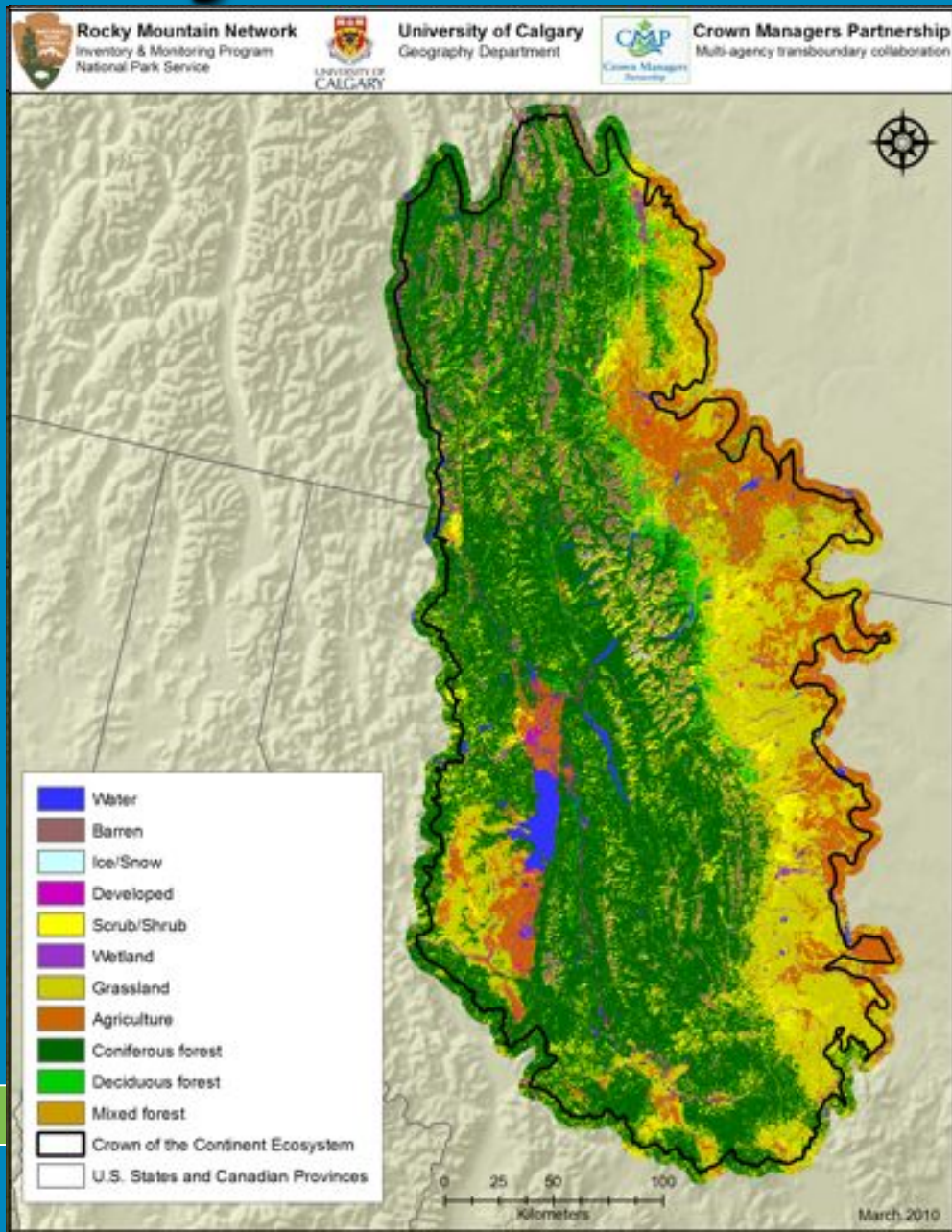


# An EH Partnership

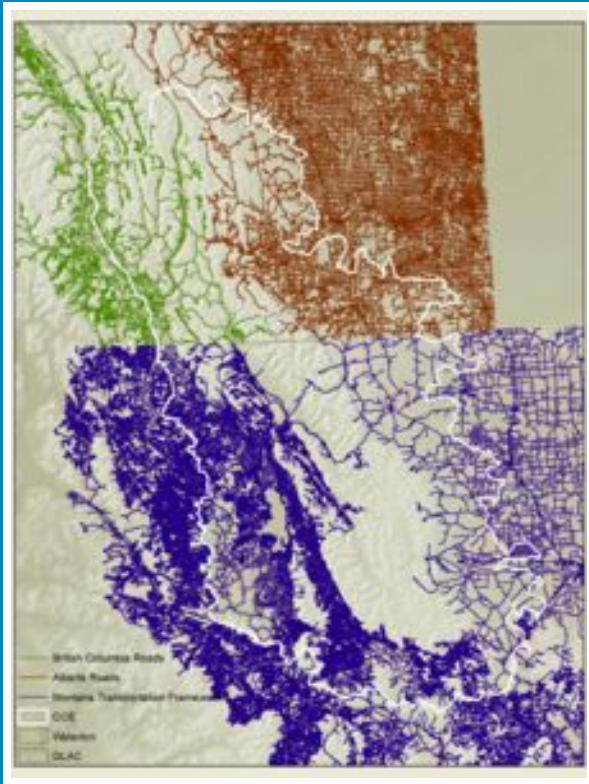


- Assemble targeted data
- Analysis:
  - assemble baseline/status data
  - analysis of landscape metrics
  - monitor change over time

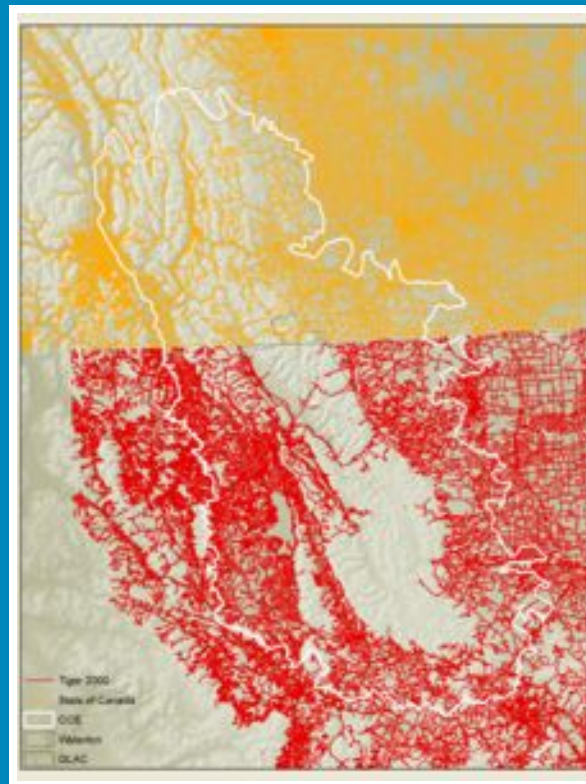
# Preliminary Baseline/Status Data



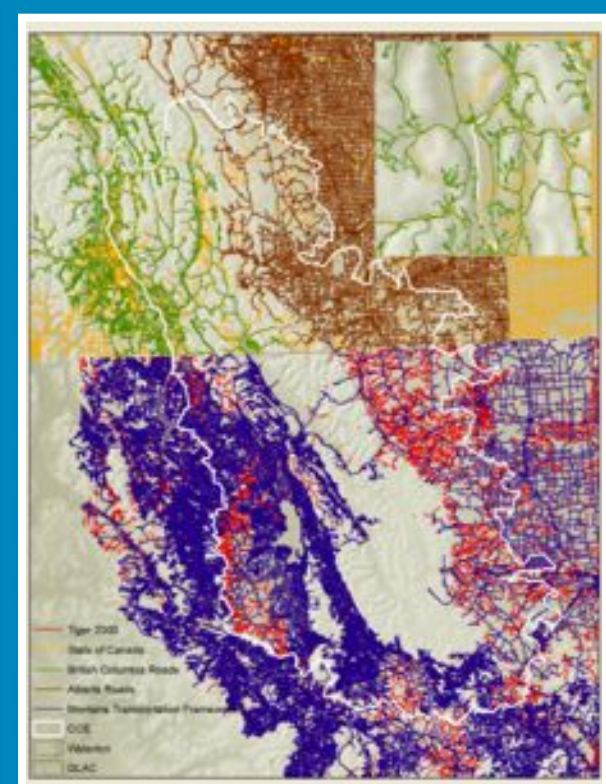
# Roads example: it might look simple...



State and  
Provinces Roads



Statistics and  
Census Roads



Comparison  
Gaps

# Potential Benefits

- **Demonstrate collective stewardship capacity – raise our collective institutional game**
- **Coordinated approach to address “Crown-wide” challenges**
- **Reduce duplication and improve communication**
- **Learn from each other (successes and failures)**
- **Enhanced capacity : institutional, science and management**
- **Provide assurance of regional environmental quality.**



# The End

