

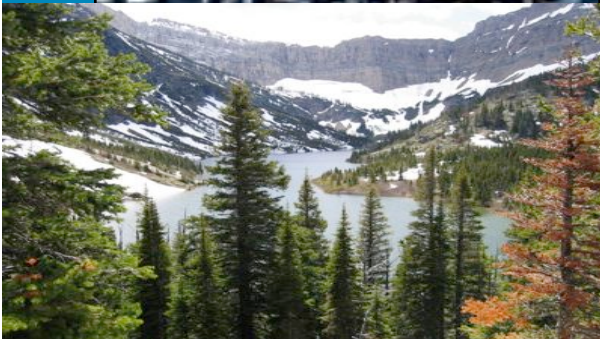


Crown Managers  
Partnership



# Managing for Ecological Health

... at a regional  
scale



# CMP Strategic Plan (2011)

## Vision:

**An ecologically healthy Crown  
of the Continent Ecosystem**

**“We will collectively develop defined measures of ecological health and the adaptive capacity to meet them, across borders, amongst jurisdictions and with stakeholders by the end of the decade.”**

# Ecological Health Project

- Long-term, multi-faceted project aimed at defining a level of ecological health that can inform agencies' management;
- Multi-year strategic priority for CMP;
- Establish on indicators-based, environmental outcomes approach



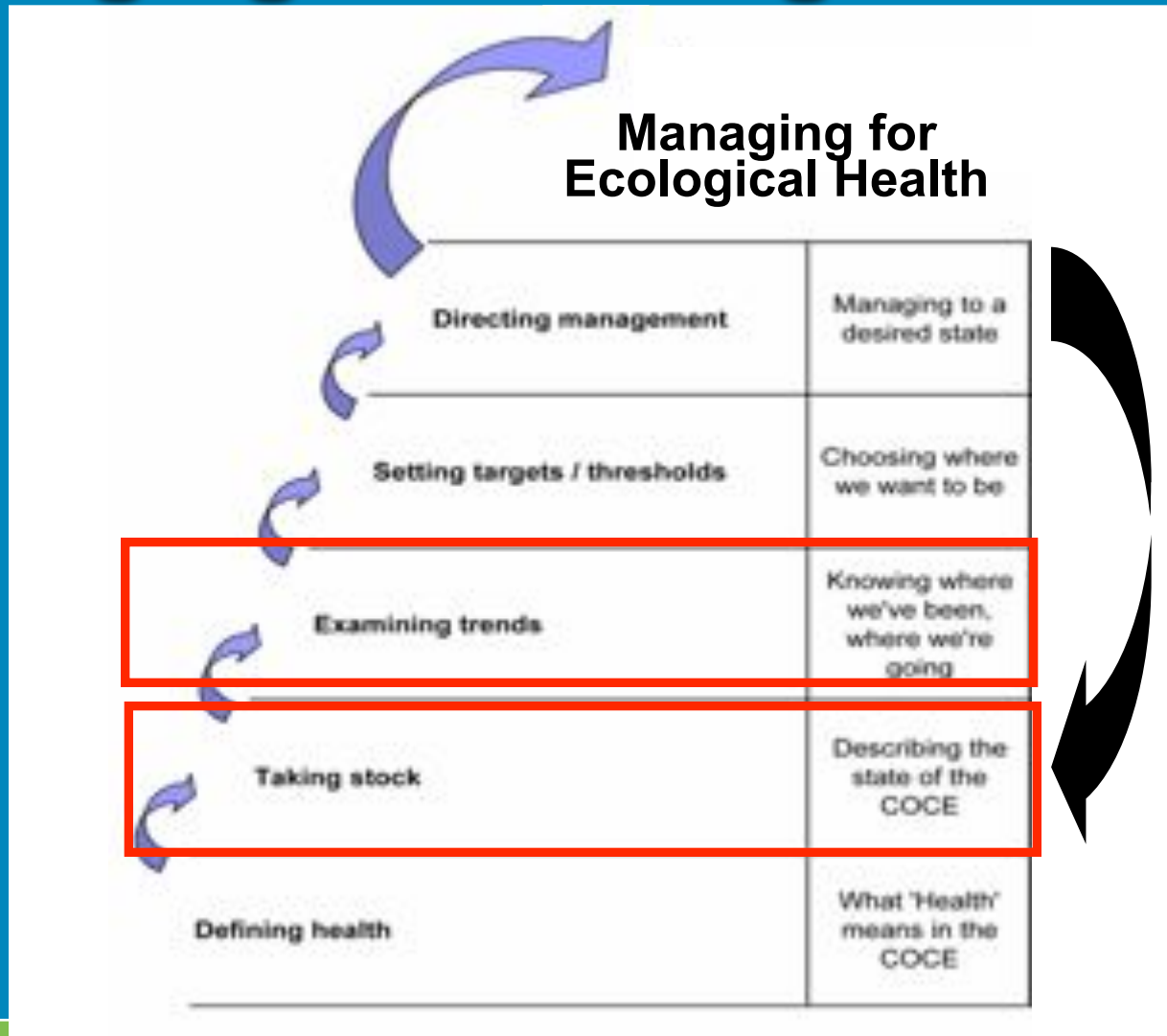
# Indicators of Ecological Health

- **Landscape**
- **Biodiversity**
- **Water quality**
- **Exotics**
- **Climate**
- **Air quality**

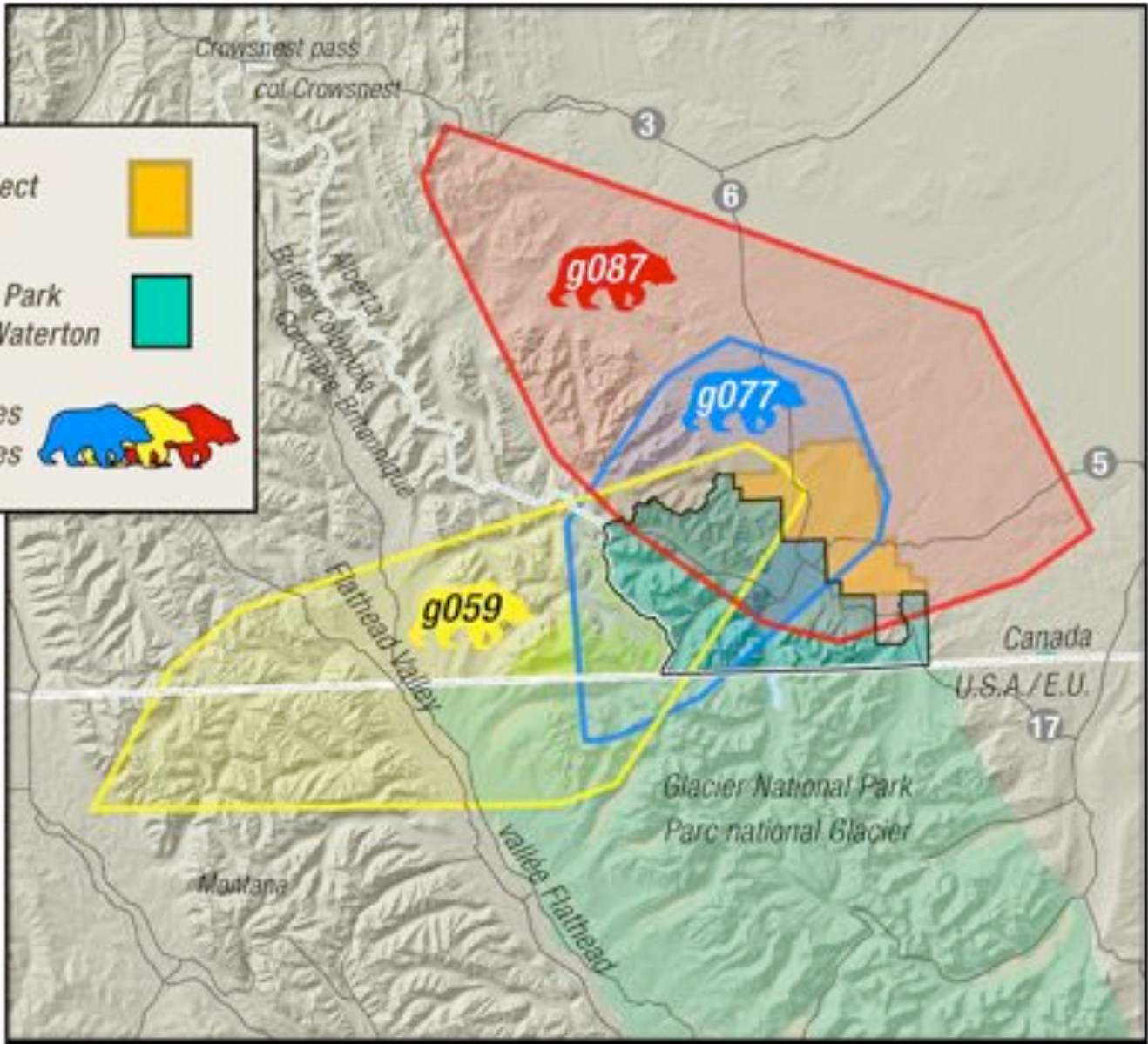




# Managing for Ecological Health



Waterton Park Front project Projet du Front Waterton	
Waterton Lakes National Park Parc national des Lacs-Waterton	
Grizzly Bear Home Ranges Grizzly Bear Home Ranges	



# Ecological Health Project

## Annual Crown Managers Forum:

- 2007 - Defining Ecological Health Indicators
- 2008 - Landscapes and Wide-ranging carnivores in the CCE
- 2009 - Biodiversity in the CCE
- 2010 - Climate Change in the CCE
- 2011 – Aquatic Invasive Species
- 2012 – *Connections to the Land –*



*Exploring a Cultural Indicator for the EHP*

# Indicators

- **Air quality**
  - Assemble current ambient state and provincial guidelines;
  - Compile a dataset of AQ monitoring readings in the CCE;
  - Convene a workshop of AQ experts:
    - AQ issues and trends
    - Potential management response
    - Desirable AQ outcomes;
    - CCE wide monitoring network?
- **AIS:**
  - Summarize learnings from Forum. Map known infestations
  - Evaluate preventative strategies and i.d. response protocols
  - i.d. AIS CCE outcomes and response protocols to implement.



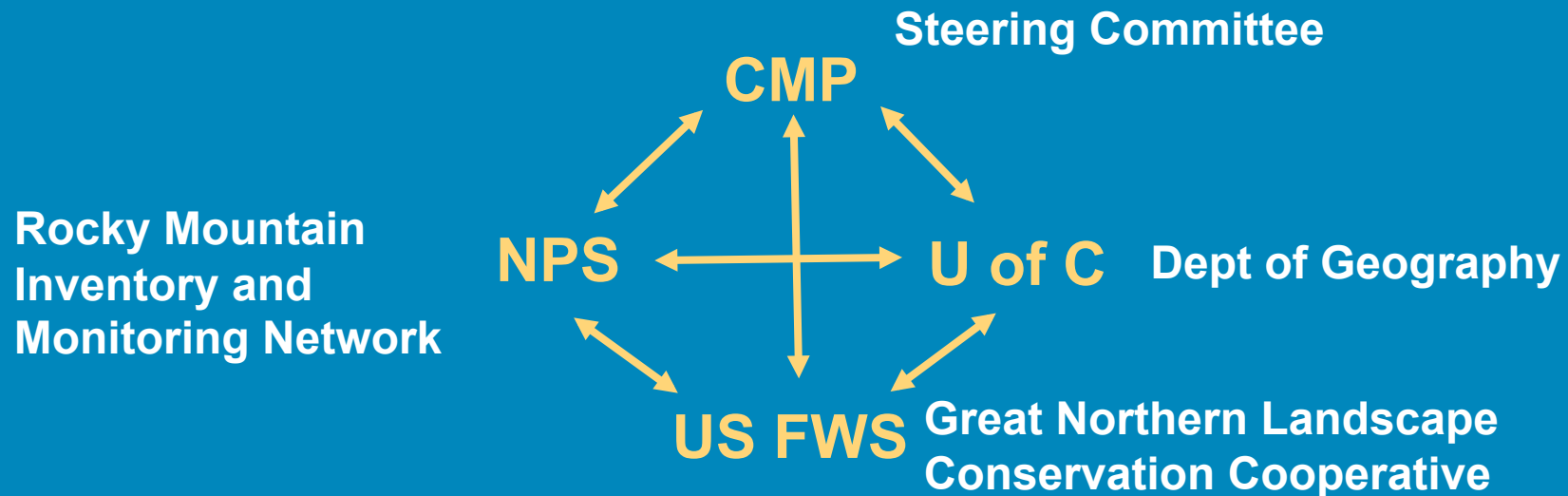
# Indicators

- **Climate Change**
  - Consider risks of climate change when recommending standards, thresholds and triggers for all other indicators.
  - *Beyond EHP: collaborate with other parties on climate change adaptation.*

# Landscape Analysis

- **Assemble common trans-boundary geospatial datasets**
- **Inventory resource condition at the scale of the CCE and establish indicators to measure change to the landscape over time**
- **Evaluate inferences between landscape metrics and ecological health.**
- **Identify supplemental work required for remaining EH themes.**

# The Partnership



## Landscapes Working Group

Greg McDermid (U Calgary)

Tracy Timmins (U Calgary)

Laura O'Gan (NPS ROMN)

Justin Wilkes (AB Env)

Erin Sexton (UM FLBS/CMP)

# Landscape Analysis

- **Develop a suite of comprehensive transboundary geospatial datasets and maps representing various attributes of the landscape at the CCE scale and applicable to the assessment**
  - **Baseline datasets at the scale of the Crown :**
    - **Roads**
    - **Census**
    - **Streams, Watershed, Riparian Buffer Zone, Road-stream Crossing**
    - **Land cover, phenology**
    - **Fire, insects**

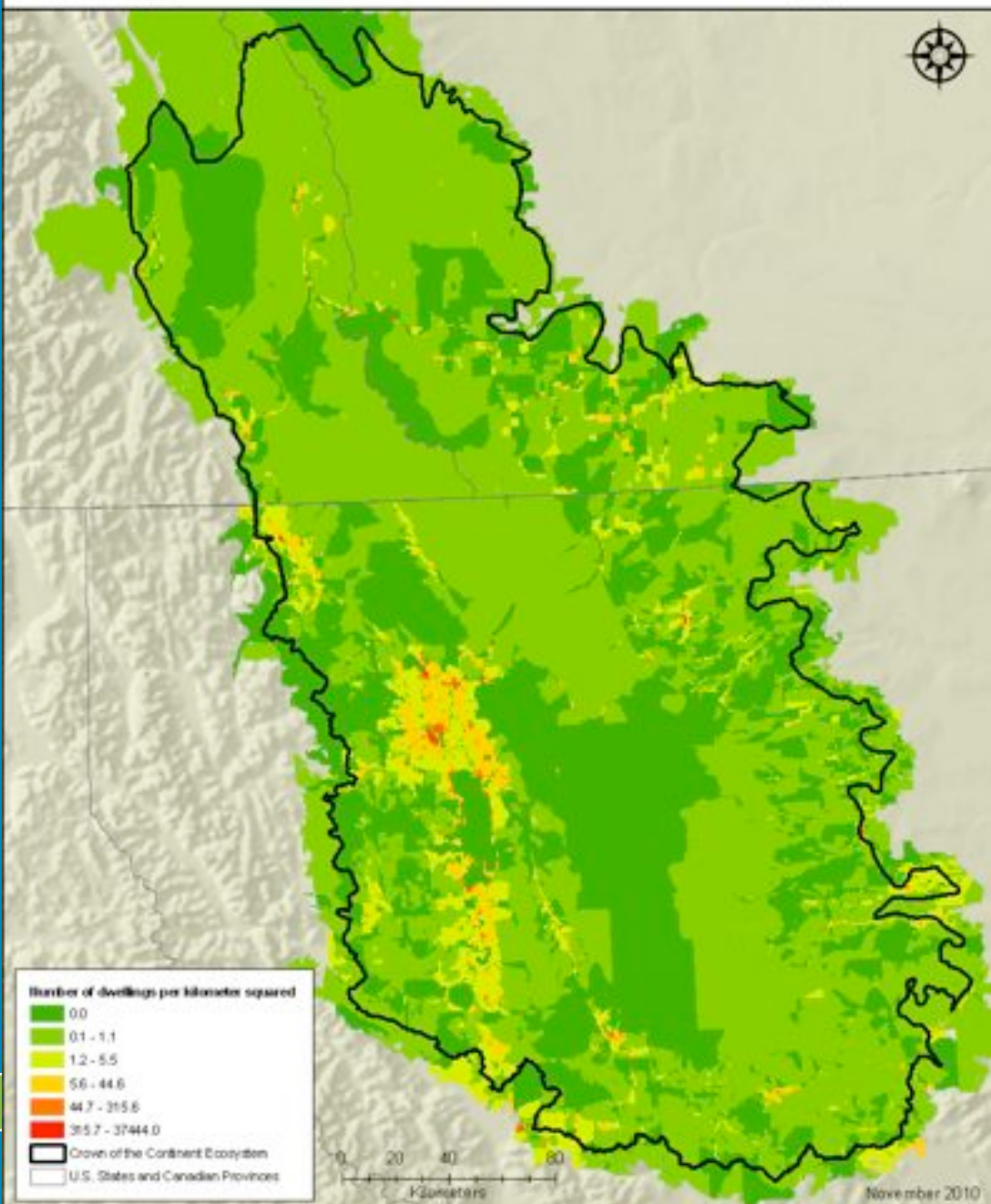




# Landscape Dynamics 2009-2010

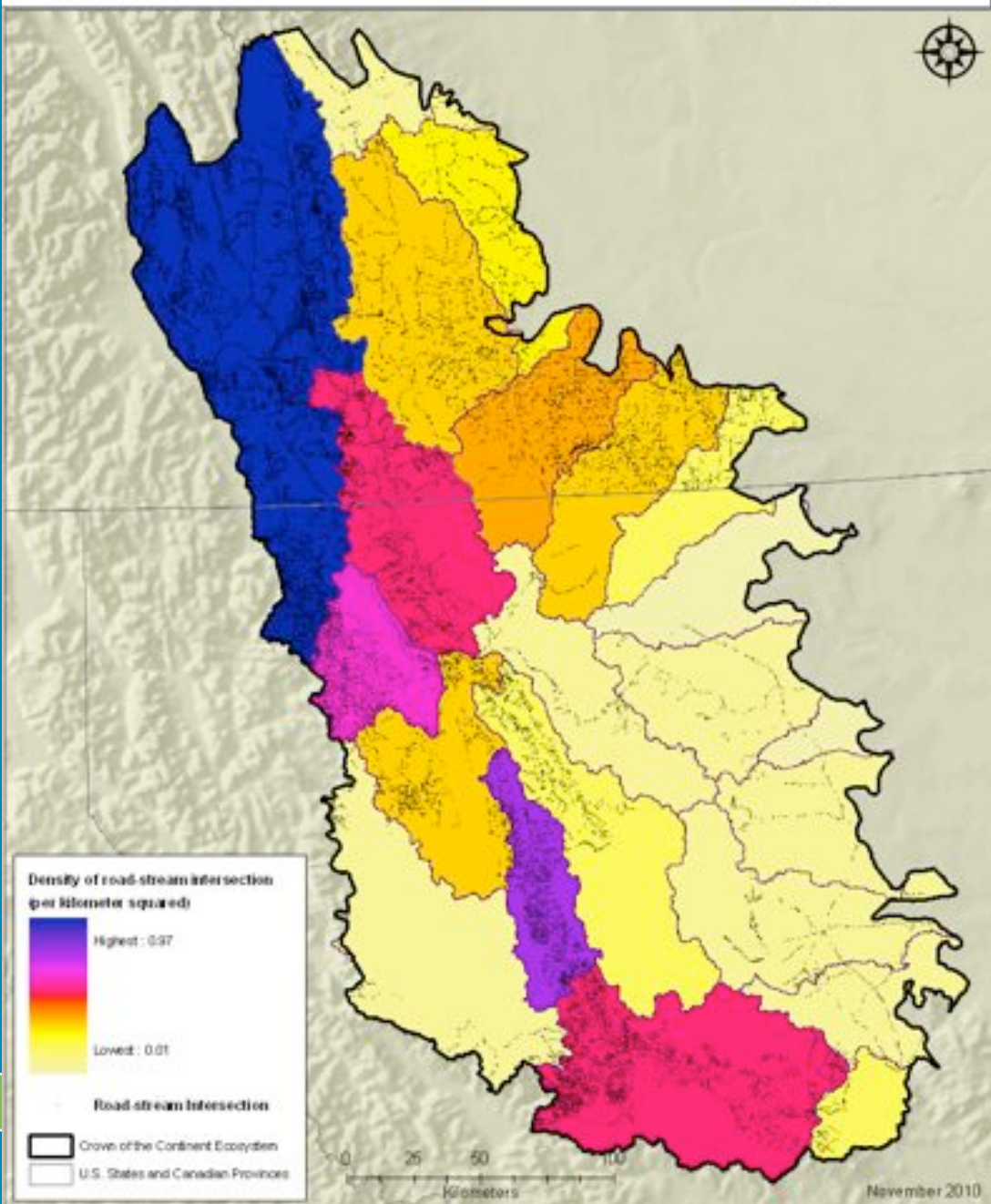
- **Data-base: Inventoried and synthesized all of the freely available geospatial data within the CCE for the land cover, phenology, disturbances, hydrology and roads**
- **First series of baseline data maps**
- **Two Reports:**
  - ***CMP Landscapes Data Review Report – A Review of Baseline Geospatial Datasets for the Crown of the Continent Ecosystem Landscape Project***
  - ***NPscapes Products: Presenting examples of maps and statistical tables derived through NPscope (2010)***





# CCE BASELINE DATASETS

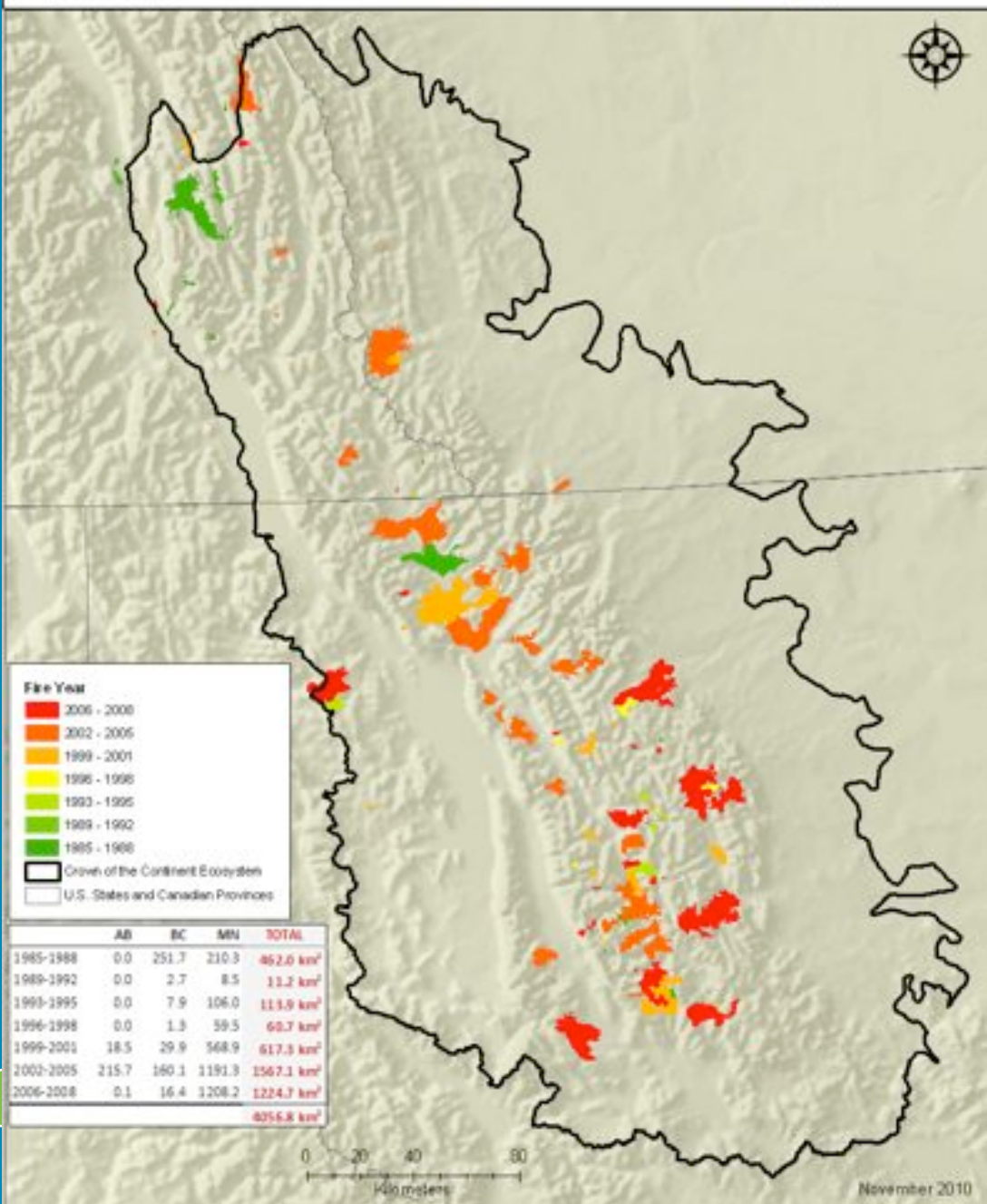
*Number of dwellings per dissemination block of the Crown of the Continent Ecosystem*



# CCE BASELINE DATASETS

*Density of road and stream intersection per km<sup>2</sup> within the Crown of the Continent Ecosystem*





# CCE BASELINE DATASETS

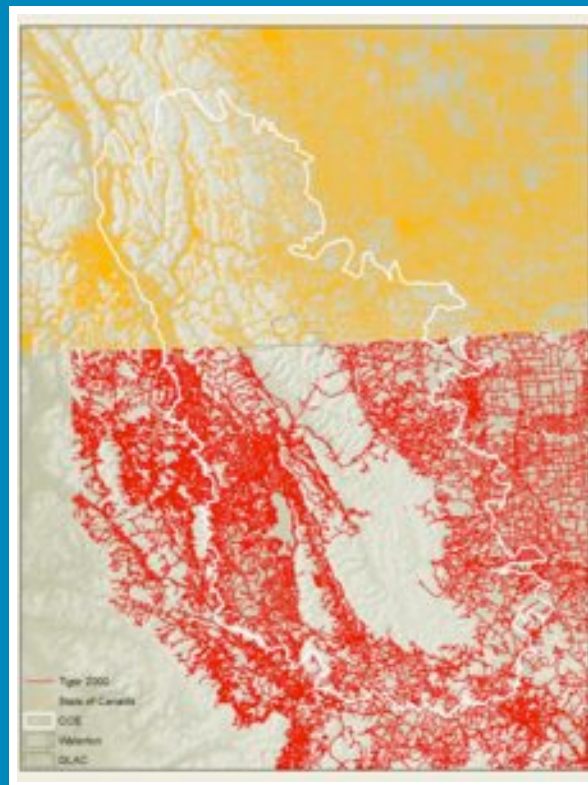
*Fire perimeters within the Crown of the Continent Ecosystem*



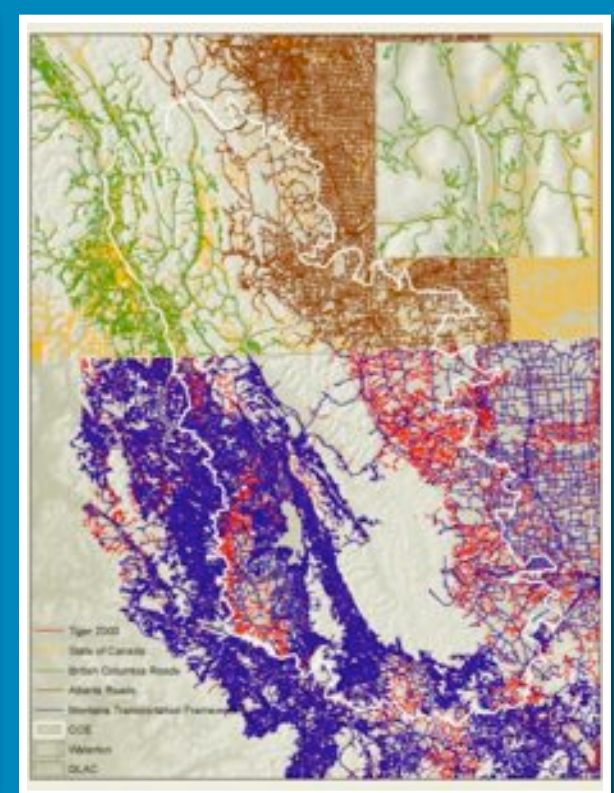
# Roads example: it might look simple...



State and  
Provinces Roads



Statistics and  
Census Roads



Comparison  
*Gaps*





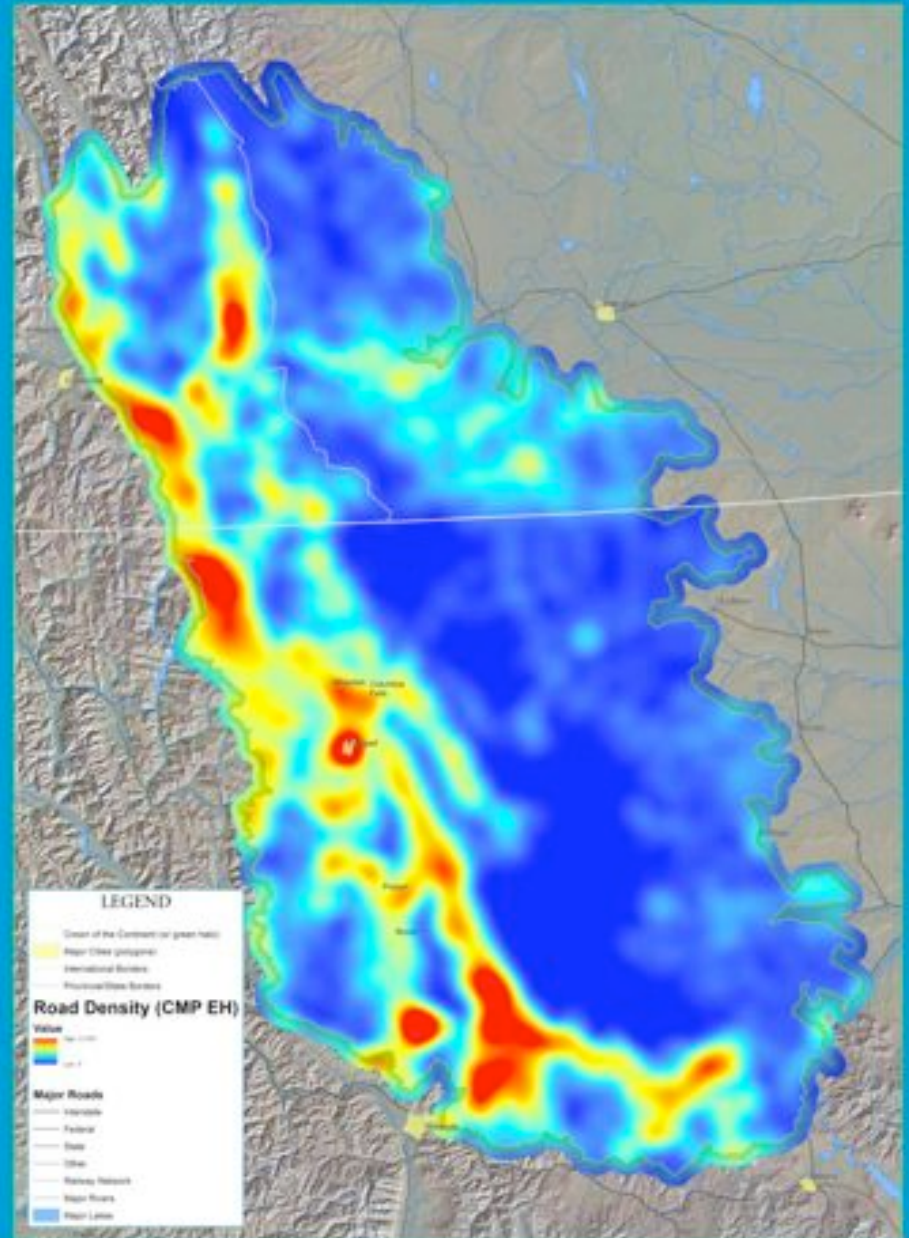
# CROWN OF THE CONTINENT

## Roads



# CROWN OF THE CONTINENT

## Road Density





# Questions?

