

**Crown of the Continent Landscape Conservation Design
Leadership Team Meeting
3-26-2024**

Link to Recorded Meeting: <https://umontana.zoom.us/rec/share/4znW3YPLH0V7FMC33Q-85dW6Vf3L1eQJX3ec9TCBwkgVz0a6jJYkQx4EYSLT4Si.-esMoGNuqZ3mASXC>

Welcome and introductions

- Sean Finn
- Mary McFadzen
- Constanza von der Pahlen
- Anne Carlson
- Phil Matson
- Maddy Eagle
- Connie Simmons
- Soleil Osgood
- Danie Frevola
- Kelly Cooley
- Bailie Eikill
- Sarah Lundstrum
- Amy Lisk
- Josh Killeen
- Brad Romaniuk
- Mary T McClelland
- Tabitha Graves
- Erin Sexton

Announcements

- CMP Forum- April 16th-18th, 2024 in Cranbrook B.C.
 - More info on the CMP Forum: <https://www.crownmanagers.org/forum-24>
 - Forum Registration: <https://www.eventbrite.ca/e/water-the-rope-that-ties-the-tipi-poles-together-tickets-839284702137?aff=oddtcreator>
- Cooperative Ecosystem Studies Unit (CESU) webinar
 - Measuring lands across borders for future generations: how the Crown Managers partnership spans decades and boundaries in the crown of the continent ecosystem
 - Today! (3/26/24 at 2pm MT)
 - Registration: https://umontana.zoom.us/webinar/register/WN_A6OqV9IyQS-p8LqPgKDWcQ
- Kelly Cooley
 - Kelly is presenting and helping with hosting an invasive species EDRR workshop on the 18th in Fort Macleod, Alberta. <https://www.eventbrite.ca/e/south-west-invasive-managers-early-detection-rapid-response-workshop-tickets-830391422097>
 - About the Southwest Invasive Managers: [https://www.watertonbiosphere.com/projects/swim/#:~:text=The%20South%20West%20Invasive%20Managers%20\(SWIM\)%20represent%20a%20diverse%20group,our%20cherished%20southwestern%20Alberta%20landscapes](https://www.watertonbiosphere.com/projects/swim/#:~:text=The%20South%20West%20Invasive%20Managers%20(SWIM)%20represent%20a%20diverse%20group,our%20cherished%20southwestern%20Alberta%20landscapes)
 - A reminder to register for the North American Invasive Species Management Association's Annual Conference, co-hosted with the Montana Invasive Species Council, in Missoula Montana Sept. 30 - Oct 3, 2024: <https://conference.naisma.org/>
 - NAISMA Conference in Missoula - here's how to submit (deadline May 7th, 2024): <https://conference.naisma.org/abstract-submission/>
 - CMP should present several posters and abstracts!
- Constanza von der Pahlen
 - Finished living in flathead guide
 - Check it out here! → Living in Flathead Guide: www.livinginflathead.org

Short recap of Phase 1& 2

- **What is the Landscape Conservation Design?**
 - 5 step process that is inclusive, holistic, iterative, and transparent
 - It will result in co-developed maps, analytical tools, and strategies that enable stakeholders to achieve collective landscape goals
 - View components of the LCD by clicking on the links below:
 - [LCD Home Page](#)
 - [Landscape Features](#)
 - [Partners](#)
 - [Documents & Products](#)
 - [Data Catalogue & Repository](#)
- **Products**
 - 15 Ecological Features
 - Fine Features
 - Coarse Features
 - Social, Cultural, Ecological (more coming in Phase 3)
 - Situation Analyses:
 - Situation Analysis for each Ecological Feature (Conceptual Model)
 - Spatial Designs:
 - Concept to design
 - Cumulatively estimate threats across the landscape
 - Model the opportunity to deliver conservation across a spatial landscape
 - Strategic Designs:
 - Conservation opportunity
 - $\text{Lynx Cost Estimate} + \text{Lynx Feature Estimate} = \text{Lynx Spatial Design (conservation opportunity)}$
 - Uses Marxan (a Conservation planning software)
 - Strategy design → What do we do with this information?
 - Who will deliver conservation, where will they deliver it, and when will they deliver that conservation?
 - We have not yet gotten to this step yet
- **ATBC funding and overall project goals**
 - LCD Phase 3 has partnered with the Confederated Salish and Kootenai Tribe → Biocultural Restoration in the Crown of the Continent
 - 2023 America the Beautiful Challenge grant award (\$3.5 million)
 - Led by CSKT and Kootenai tribes
 - 3 main project highlights: White bark Pine restoration, bison habitat improvements, and flowering rush management
 - ATB grant provides local training and jobs – and community participation
 - Connie Simmons: In the focus on bio-cultural restoration - if not already underway, perhaps talk to Elliot Fox about the Blackfoot Confederacy's IPCA initiative - this would overlap some of the areas of high conservation value in the Livingstone PLUZ.
 - Elliot is a co-author of the grant but has moved into this new position with the Blackfoot Confederacy since then, so a re-visit is definitely needed!
- Landscape Conservation Design integration:
 - \$450k support for influx of knowleges, convening stakeholders and completing a 'full' design in 2025.
 - Cultural and ecological integration across these large landscapes
- Social, Cultural, economic Features:
 - We intend to make these features a focus of Phase 3:
 - Water availability
 - Air quality

- Recreation / access
- [Others] (potentially things like bison or beavers- but we want to fill in the *others* with ideas from indigenous voices)

Goals and objectives for Phase 3:

- Anticipated Products: Situation Analyses, Spatial Designs, Strategic Designs, Online Mapper
- Continue to integrate indigenous knowledge
- Expand Analysis Team with Targeted Expertise
 - *Seeking & recruiting contract positions now! Put them in the jamboard or contact any Analysis Team member!*
- Feature-focused workshop series:
 - 10 over the next 2 years (2024-2025)
 - Facilitated by an expert
 - Research and practitioner tracks:
 - Researchers focus on: models, threats, opportunities
 - Managers focus on: strategy design, co-developed landscape scale strategies (based on 63 natural resource management plans)
 - Integrate feature designs into a landscape design
 - Timeline for Phase 3:
 - Funds for the grant should become available sometime in June
 - We have a workplan in place for Phase 3
- Phase 3 Workshop logistics:
 - Workshops will be hosted starting this summer ideally
 - Co-hosted with at least one partner
 - CMP + CSKT + Hosting Organization
 - 1 every other month or so
 - Some think workshops should not be held in July and August- very busy time
 - LCD provides support funding (roughly \$1,000 / workshop)
 - Professional facilitator provided
 - Support from analysis team and
 - Workshop working group
 - *If you are interested in cohosting a workshop, self-nominate and let us know!* (jamboard or email)
 - Social, Cultural, and Economic workshops
 - There will be at least 2
 - Connie / Kelly thoughts: Crow's nest pass area is very toward socio-economically (very difficult for some to think past extractives), there needs to be community engagement and conversation.
 - Southern Alberta is a good area to look at.

Open discussion

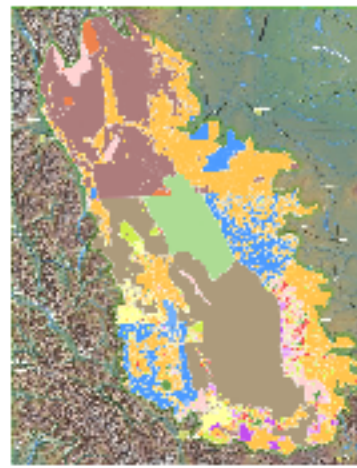
- Question from Connie: (In response to Jamboard 1)
 - Why don't we have orgs like Old Man Watershed Council participating in the LCD? Is this something you would want – for us to reach out to relevant groups to participate in Phase 3?
 - Absolutely! It's imperative that we have those kinds of voices, so we value LCD partners reaching out and expanding the way we reach out to groups.
 - It is also important to think about how we could reach out to groups that may not be interested in this kind of science-based work but would benefit from it.
 - We like to think that the LCD provides solutions that have co-benefits. People's interests are valid, even if we don't agree with them. We want shared resolution finding.

- Amy says she has worked with multiple motorized Rec groups over the years and thinks there are a few that would be interested
 - We can communicate informally too! Reach out to Sean to have a conversation about getting groups involved.
- Anne Carlson Question (In response to Jamboard 2)
 - Does this take into account (ex: Grizzly Bears) conflict issues in the way that that fragments habitat and movement?
 - There is a way to do that. Spatial data is what you make of it.
 - As we developed conservation opportunities, those factors could be a part of it.
 - Social situations are important and should also be considered.
 - Great to have a conversation about this topic within workshops.
 - Waterton biosphere has a great program / model that works with carnivores
- Workshop Venue Ideas (In response to Jamboard 3)
 - Parks Canada- has big picture view
 - Kanai blood tribe- recently opened new facility for their college ([Red Crow College](#)), would be a great venue (standoff, AB)
 - KEPA (Kanai ecosystem protection ... would be interested involvement (contact Elliot Fox)
 - KEPA - Kainai Ecosystem Protection Association is an excellent group to engage for workshops and hosting at Red Crow College. (contact Elliot Fox for more)

Landscape Partnerships

What landscape-scale efforts/partnerships do you engage with?

Include your goals and a contact name.



Click on 4th icon on left to open a sticky note, type away and save!

Click on the three dots in upper right corner of note to edit, delete note, etc.

Invite Breidinger, Leah <LBreidinger@mt.gov> who replaced Kristi Temple and used to participate in LCD.

USFWS is working with Flathead Lakers & other partners to create mobile app to deliver real-time stream flow & temps for river users. Contact: Matt Heller

Municipal Districts and Counties in SW Alberta / SE BC - I know they've been involved with CMP in the past, but not sure how engaged they remain. Should be re-engaged.

ORCA (Outdoor Recreation Coalition of Alberta) is a not for profit in Alberta working towards a provincial voice for all non-motorized recreation.

National Wildlife Refuges in NW Montana. Contact: Amy Lisk

Recently established bull trout conservation working group, lead by Mt. Fish, Wildlife and Parks. Contact: Kristin Cook

CCE invasive plant working group - folks from AB, BC, and MT. We produced a third edition invasive plant guidebook a couple of years ago but haven't met for about a year now...

Crown LCD

Crown Managers Partnership

The brand new International Joint Commission Reference on the Transboundary Kootenai Watershed to address water pollution impacts from Elk Valley Mining

Within the Crown, a voice that would help with the LCD effort is the Livingstone Landowners Group (LLG) - currently very concerned about water issues, and coal mine development.

ORCA - intends to provide a provincial voice in land-use and recreation management processes in Alberta. Solid conservation input is needed to do this well.

ALUS Canada (West Hub) Contact Christine Campbell (Calgary) ccampbell@alus.ca www.alus.ca

Living in Flathead Guide is a collaborative outreach effort among 27 groups to encourage landscape resilience solutions.

Work with some climate groups and individuals seeking landscape resilience solutions for the Flathead area (gap between CSKT and Blackfoot nations).

New America the Beautiful Challenge grant (2024-2028) for biocultural restoration of the Crown landscape - led and administered by the Confederated Salish and Kootenai Tribes

Riparian Mgmt Society is part of Native Trout Collaborative, focused on Native Trout recovery throughout Alberta.

Riparian mmgt society initiated the Recreational Stewardship Fair which is hosted annually to promote stewardship on public land throughout the Eastern Slopes.

Riparian mmgt Society is part of the Working with Beaver Collab with Miistakis institute, focussed on promoting beaver coexistence for watershed restoration and resilience

Livingstone Landowners Group: <https://www.livingstonelandowners.net/>

Work with Flathead River to Lake Initiative to conserve critical lands (6,000 acres so far) along the Flathead River from Columbia Falls to the north shore of Flathead Lake.

Nature Conservancy Canada - Alberta

Western Montana Conservation Commission strives to protect the existing high quality of western MT's resources, including water quality, rec values, and wildlife.

Canadian Parks & Wilderness Society, Alberta Wilderness Association, Southern Alberta Group for the Environment - NGOs working on land use planning.

The maps are very useful to address where best to place outdoor recreation use. What is missing in this effort is the intensity and types of use impacts on conservation values.

The Flathead Lake Biological Station coordinates Aquatic Invasive Species monitoring and research with Tribal, Local, State, and Federal partners within the region.

presentations to user groups would be helpful - support for the science and the outcomes are predicated on how well this research has been done. The LCD has done this :)

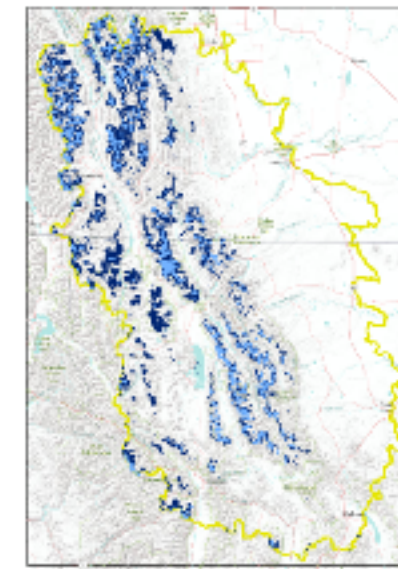
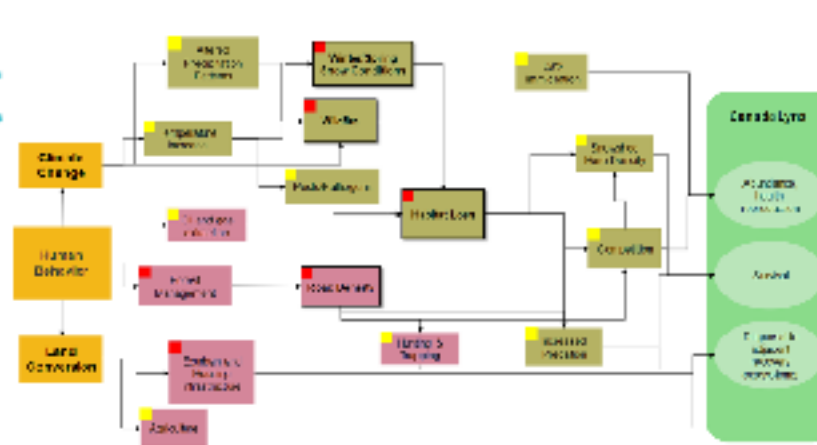
Following up on bio-cultural contacts - Elliot Fox with the Blackfoot Confederacy (IPCA initiative) and Harley Bastien (Piikani FN) source/headwaters concerns.

ORCA (Outdoor Recreation Coalition of Alberta) contact: orca.alberta@gmail.com

LCD Phase 3 Product Development

Situation analyses, spatial designs, strategic designs

What product formats is your organization most likely to use for decision making?



Full length reports with an easy-to-read summary

I would hope that the organizations and agencies I'm involved with would want to access all formats. Verbal discussion is great but there needs to be data to inform it.

Further to my last comment about all formats - that's specifically for the decision making process. If it's outreach, then maps and other visual formats are best.

Map with accompanying fact sheet (for each feature)

Informative video that can be shared paired with a communication campaign that links to organizations involved where people can sign up to get involved or participate in upcoming activities

How could MEIC be helpful in communicating LCD project and distribution of info? There are a wide range of conservation organizations on that list.

In communities, for buy in, will take answering the question of why should I care, how does this effect me?

I am sure the design team has thought of this, but the cost analysis seems to eliminate needed corridors and some landscape connectivity east-west - even if cost is hi?

Downloadable, printable media-maps, pdfs, summary reports, etc

story maps/interactive maps to people can see data spatially
Tactical planning workshops-where participants are informed about the data and modelling, then work together to prioritize on the ground actions they can put in their plan
Once priority areas are identified, a map database where people can look for conservation project opportunities/offsets or see who else has collected data or is active in this space

<-- Second this!

<-- Same here!

Brief recording-information with explanation of visuals

Interactive web tools based on datasets/ analyses + User Guides to help folks know how best to use them, sidebars and caveats

Any chance to collaborate with one of the Universities to get graduate students onboard in Journalism and other Communications departments.

workshops that inform regional/local groups about conservation values, needs and opportunities, and connectivity to larger landscape - specific to that area.

Information should be standardized messaging for several levels of understanding of the issues: beginners, intermediates and experts.

For the broadest reach, one needs to have information in every learning style, because everyone learns differently. If you are a visual learner a short video is better than email.

Stories so important to reach uninformed and doubting persons

Develop a message template each level, that could be available to people/orgs to reach out to leaders/groups such as Connie is mentioned? diffg group/diff message

+++

Every Audience will likely need something slightly different, from an educational standpoint, having a one pager poster style format in plain language

+++

Could consider a collaborative workshop in Crowsnest Pass with ORCA, Gov't of AB Recreation staff/land-use planners.

LCD Phase 3 Workshops

10 Feature-Based Workshops in 2024-25

What would you like to get out of the feature-based workshops?

| Fine Features | Coarse Features |
|---------------------|-----------------|
| Whitebark Pine | Forest |
| Bull Trout | Grassland |
| Westslope Cutthroat | Shrubland |
| Mule Deer | Wetland |
| Elk | Riparian |
| Grizzly Bear | Aquatic Systems |
| Wolverine | Connectivity |
| Canada Lynx | |

Who would you nominate to attend?

Discussions for implementation of LCD results

Subject matter expertise feedback for the conceptual models is critical, as well as access/recommendations to new data.

How will leadership team and technical team work together to address areas where emerging conservation strategies conflict across different features?

Community engagement and discussion for our Social, Cultural, and Economic features

Leah, with FWP, whom you met at our February R2L meeting, replaced Kris Temple, who is now with USFS. She should be invited. LBreidinger@mt.gov Constanza

I wonder if we need to reconsider calling them "workshops".. from what I understand we would like to gain information from our partners during these not vice versa

Present conservation needs, opportunities, roadblocks for a subregion. Understand how local efforts fit in larger landscape values.

Red Crow College - Kainai Nation:
<https://www.redcrowcollege.com/>

Parks Canada Waterton would be a good venue.

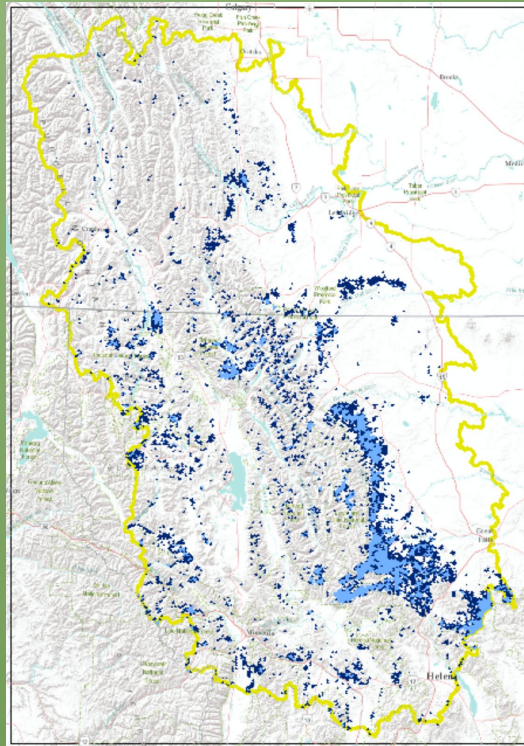
How the AGOL portal can help organize and assimilate data, expertise, and future collaboration...

R2L Initiative focus area too small and too focused on implementation to be useful to first round of workshops. Some partners would participate in bigger group effort.

At the workshops - it would be great to gather information on how the network continues to stay engaged together over the long-term.

Please add any other comments here:

Crown LCD - Phase 3



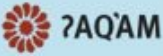

Leadership Team call

26 March 2024

Today's Agenda

1. *Welcome & Introductions (chat box)*
2. *Announcements*
 - *Crown Managers Forum*
 - *CESU Webinar*
 - *Anyone else?*
3. *Short recap of LCD Phase 2*
 - *Process*
 - *Jamboard 1: who is missing?*
 - *Products*
 - *Jamboard 2: how do you use info?*
4. *Phase 3: ATBC funding and overall project goals*
 - *Goals and Objectives*
 - *Products*
 - *Social, Cultural, Economic Features*
5. *LCD Phase 3 Goals and Expected Products*
 - *Situation Analysis, Spatial Design, Strategic Design*
 - *Workshops*
 - *Jamboard 3*
6. *Open Discussion*
7. *News from around the Crown*

2024 Crown Managers Forum




**WATER: THE ROPE
THAT TIES THE TIPI
POLES TOGETHER**
STEWARDSHIP FOR LAND AND CULTURE

ST. EUGENE GOLF RESORT & CASINO
ʔA·KISÁQʔIʔIT | CRANBROOK, BC

APRIL 16TH-18TH, 2024

SAVE THE DATE | MORE INFO AT
CROWNMANAGERS.ORG/FORUM-24



*Co-hosted by ʔaq'am
community of the Ktunaxa
Nation*

April 16-18 in Cranbrook, BC

[Registration is open](#)

[CMP 2024 Forum webpage](#)

Cooperative Ecosystem Studies Unit Webinar

Managing lands across borders for future generations: how the Crown Managers Partnership spans decades and boundaries in the Crown of the Continent Ecosystem

Today!! (sorry for the late announcement!)

2 pm mountain time

[REGISTER HERE](#) *Today!*

Presenters:

- Tara Carolin, Director of the Crown of the Continent Research Learning Center, Glacier National Park, U.S. Co-Chair, CMP Steering Committee
- Michael Durglo Jr., Director, Division of Environmental Protection and Climate Change Planning Coordinator, Confederated Salish and Kootenai Tribes, CMP Steering Committee Member
- Elliot Fox, Proprietor, Velox Ecological Consulting, Indigenous Communities Liaison, The Resilience Institute, Kainai First Nation Member, Project Manager - Environmental Protection & Conservation with the Blackfoot Confederacy Tribal Council, CMP Steering Committee Member
- Sean Finn, Science Coordinator, Science Applications Program, US Fish and Wildlife Service, Legacy Region 6, CMP Steering Committee Member
- Erin K Sexton, Senior Scientist, University of Montana Flathead Lake Biological Station, CMP Steering Committee Member

Any other Announcements?



What is Landscape Conservation Design?

- *A partner-driven approach to achieve a sustainable, resilient landscape that meets the ecological and social needs of current and future generations*
- *Equal parts process and products, an LCD is:*
 - **inclusive**
 - **holistic**
 - **iterative**
 - **transparent**
- *results in co-developed maps, analytical tools, and strategies that enable stakeholders to achieve collective landscape goals.*

Phase 2:

Phase 3:



See: [A Primer on Landscape Conservation Design](#)

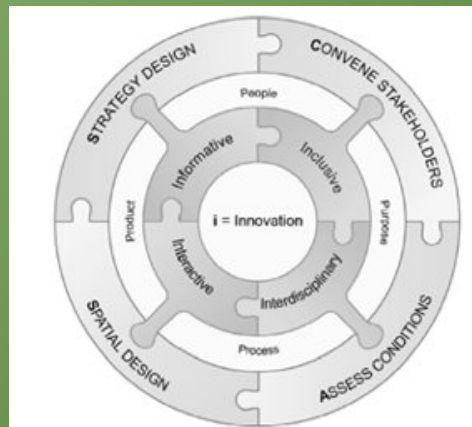
Crown LCD Tools in the Box

Inspirations:

- [Systematic Conservation Planning](#) (Margules & Pressey 2000)
- [Conservation Planning](#) (Game and Groves 2016)
- [Nine Principles for Landscape Conservation Design](#) (Campelone et al. 2018)
- [Pathways to Success: Taking Conservation to Scale](#) (Salafsky & Margoluis 2021)

Tools:

- *Teamwork*
- *Knowledge*
- [Conservation Standards](#) (Formerly known as the Open Standards for the Practice of Conservation)
- [Marxan](#) tools designed to help conservation decision makers find solutions



Crown LCD Vision and Goals

Crown LCD Resources

Vision:

*Ensuring a resilient, connected landscape that supports healthy **ecosystems** and human **communities**.*

[*LCD Home Page*](#)

[*Landscape Features*](#)

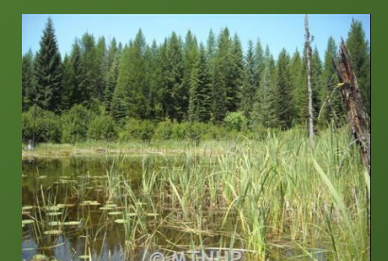
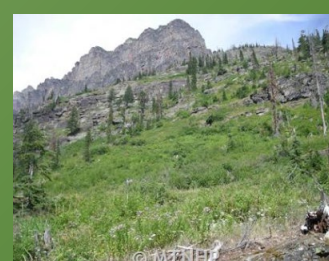
Goals:

- To rely upon cutting-edge science, Indigenous knowledge, and modeling to collectively increase the resilience of waters, forests, and grasslands*
- To sustain healthy ecosystems, communities, and economies through working lands partnerships*
- To recognize the leadership, history, culture, and traditional territories of Indigenous peoples as we plan for the future*

[*Partners*](#)

[*Documents & Products*](#)

[*Data Catalog & Repository*](#)



Crown LCD Process



Convened by Crown Managers

Partnership

42 Organizations join Leadership

Team (LT)

Technical Team, Analysis Team and

Social, Cultural and Economic

Subcommittee formed

63 Resource Management Plans

reviewed & cross-referenced

LT selects Project Area & Ecological

Features

51 Subject Matter Experts surveyed

> 200 data sets evaluated

Inclusive, Holistic, Iterative, Transparent

Who are we missing?



Interaction 1: Use link in the chat to go to Jamboard

LCD Products, Phase 1

Ecological Features (n = 15)

Fine Features

Whitebark Pine

Bull Trout

Westslope Cutthroat

Mule Deer

Elk

Grizzly Bear

Wolverine

Canada Lynx

Coarse Features

Forest

Grassland

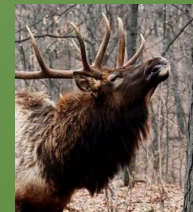
Shrubland

Wetland

Riparian

Aquatic Systems

Connectivity



[Crown LCD Feature Selection Report](#)



*Social, Cultural, Economic Features
Coming in Phase 3*

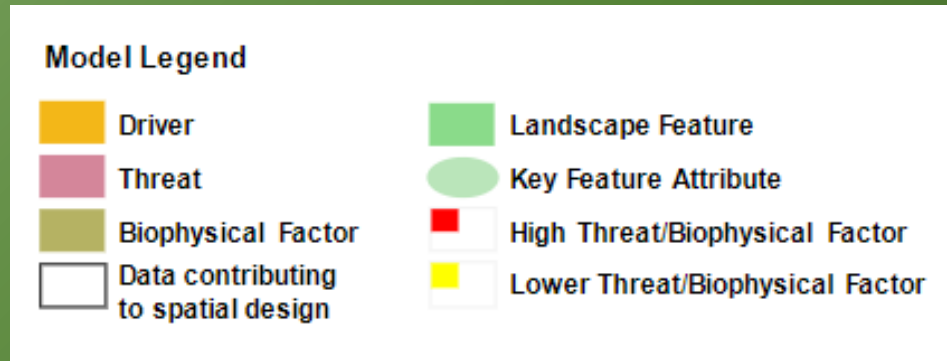
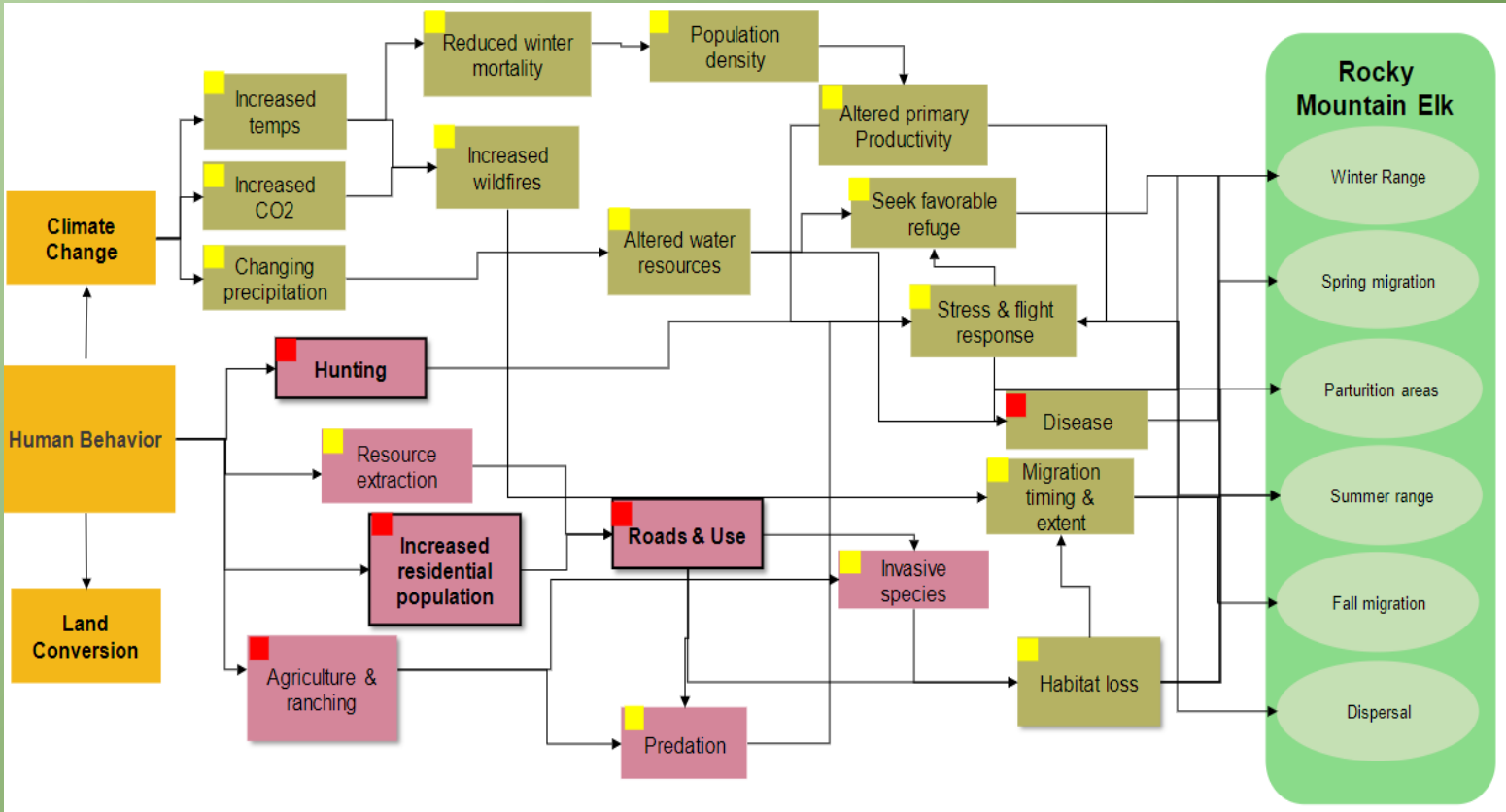
LCD Products, Phase 2



Situation Analysis (for each Ecological Feature)

Example: Rocky Mt. Elk

- Literature Review*
- Draft Conceptual Model*
- Elicit Expert Knowledge*
- Vetted Conceptual Model*
- Data Availability, Extent, Veracity*
- Optimization model parameterization*
- Conservation Opportunity Analysis*
- Spatial Design*



LCD Products, Phase 2:

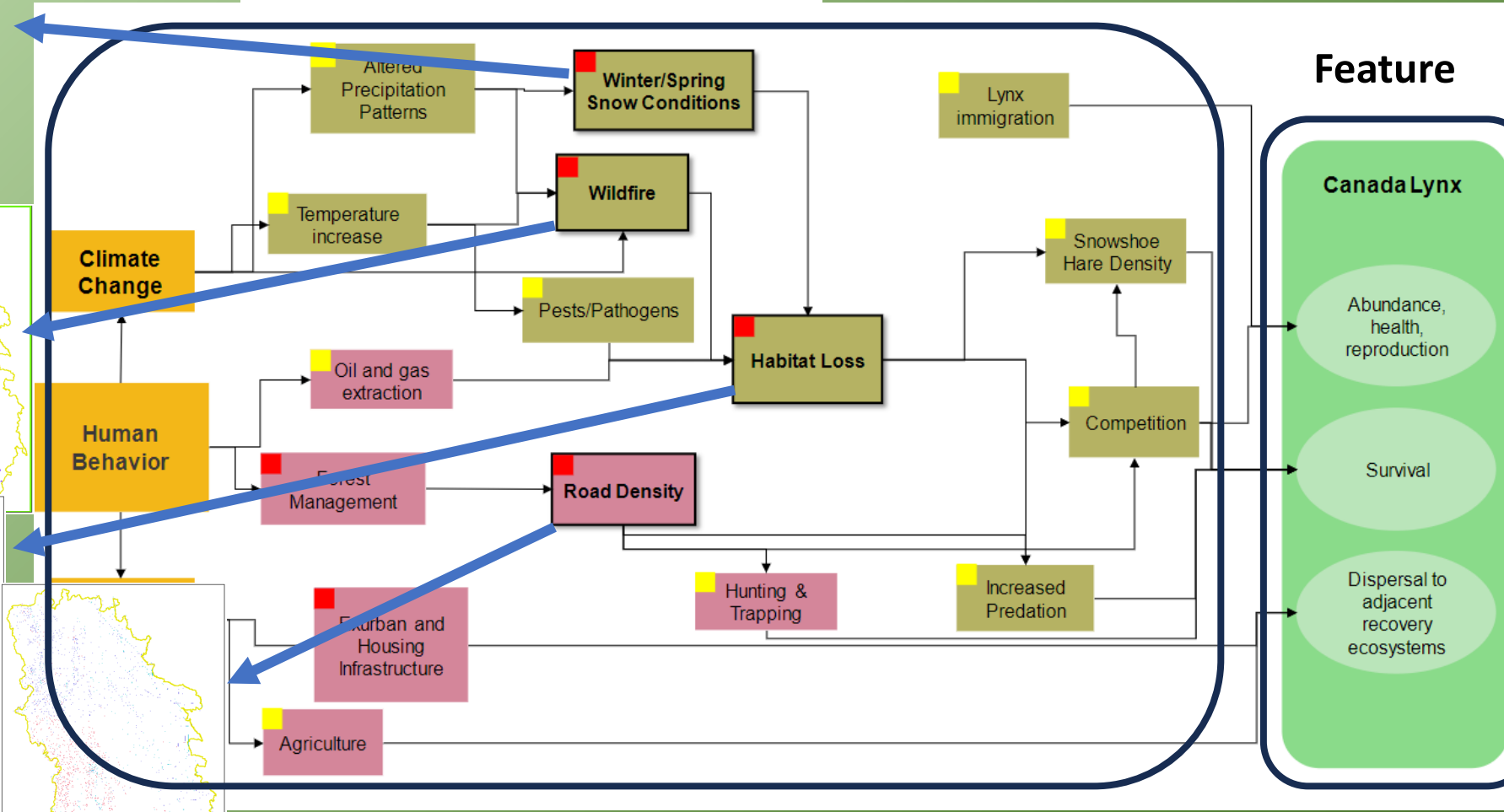
Concept to Design: Canada lynx



Model Legend

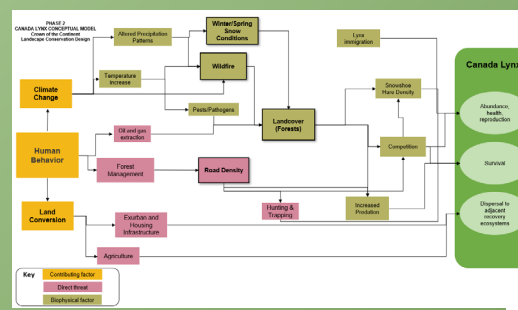
- Driver
- Threat
- Biophysical Factor
- Data contributing to spatial design
- Landscape Feature
- Key Feature Attribute
- High Threat/Biophysical Factor
- Lower Threat/Biophysical Factor

Threats, cumulatively ... Cost



Canada Lynx

conservation opportunity



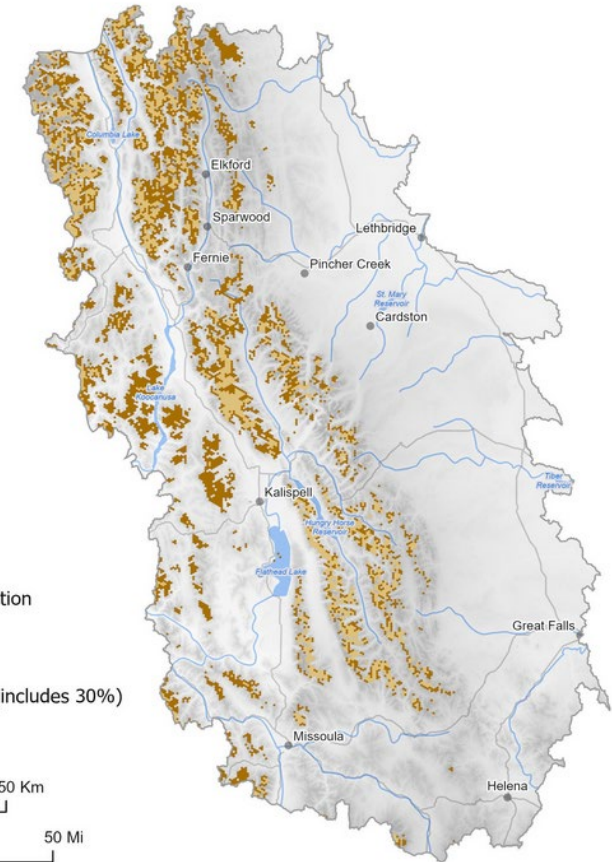
Lynx Spatial Design

Lynx Cost Estimate

Lynx Feature Estimate



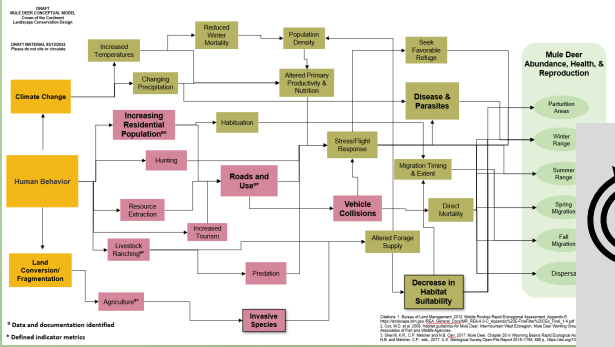
CANADA LYNX Phase 2 Draft Spatial Design



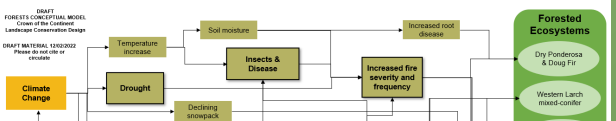
Ecological Feature Spatial Designs



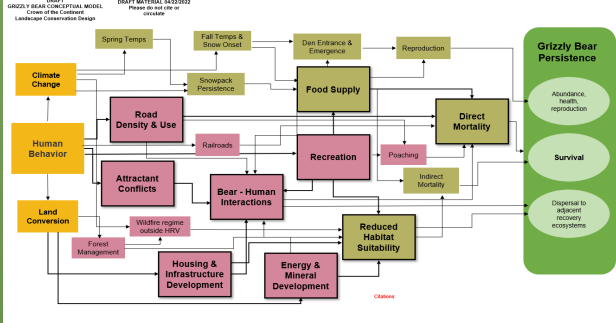
Elk



Forest

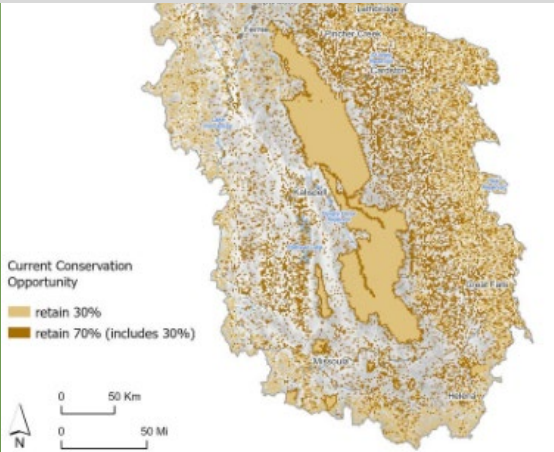
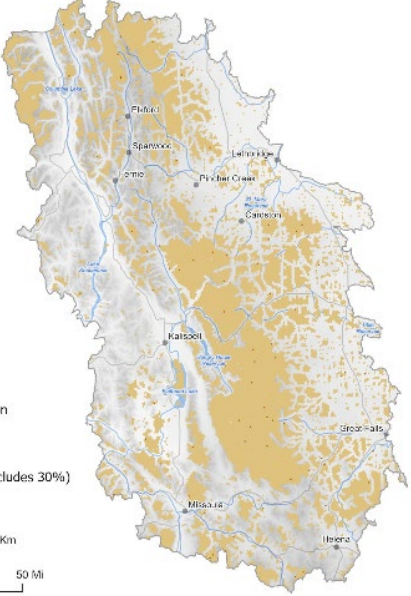


Grizzly Bear



Literature Review
Draft Conceptual Model
Elicit Expert Knowledge
Vetted Conceptual Model
Data Availability, Extent, Veracity
Optimization model parameterization
Conservation Opportunity Analysis
Spatial Design

ROCKY MOUNTAIN ELK
Phase 2 Draft Spatial Design

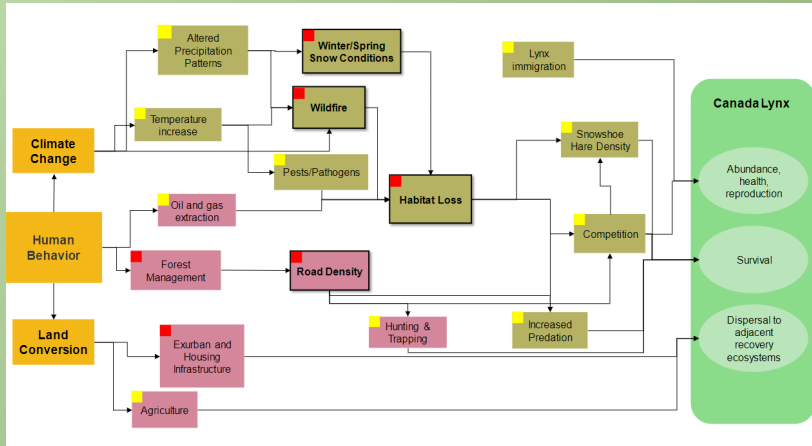


GRIZZLY BEAR
Phase 2 Draft Spatial Design



LCD Products ...

Situation Analysis

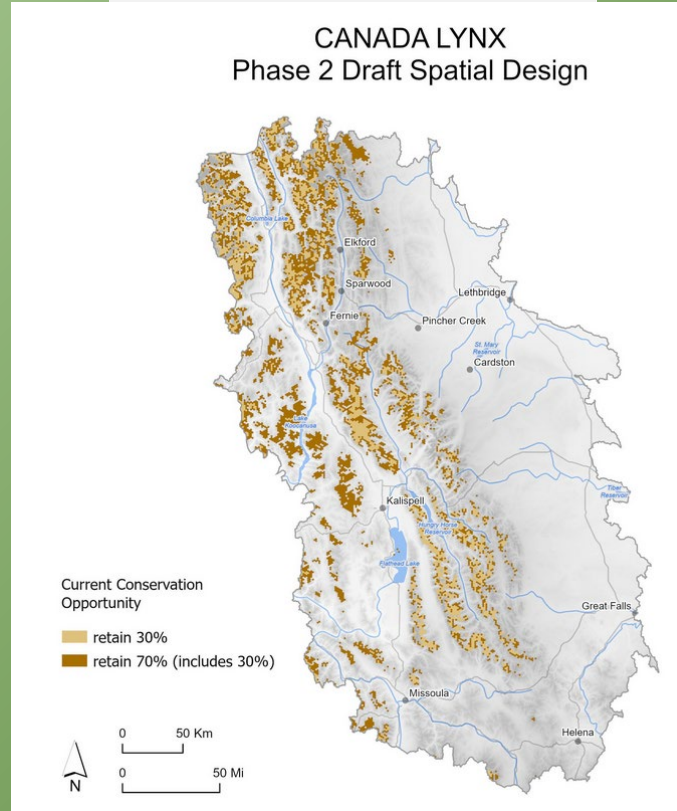


What do we know about the feature?

Where is it? How much is there?

What are the most pressing threats to persistence?

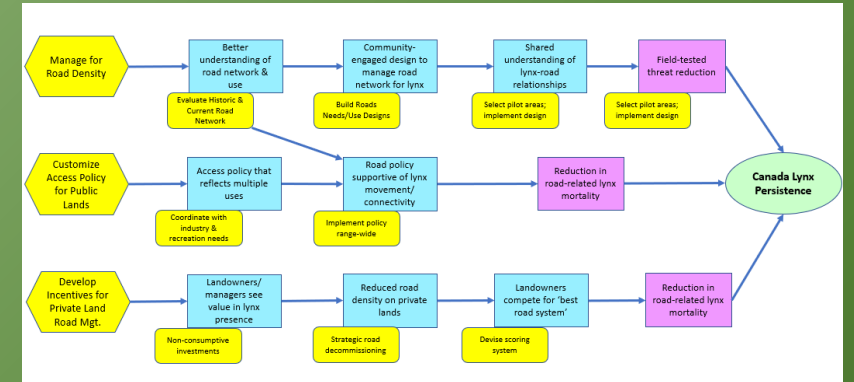
Spatial Design



Where is the conservation opportunity?

*Prevalence of the feature [minus]
Accumulation of threats =
conservation opportunities (optimized)*

Strategy Design



Theory of Change based Results Chains specific to feature/threat

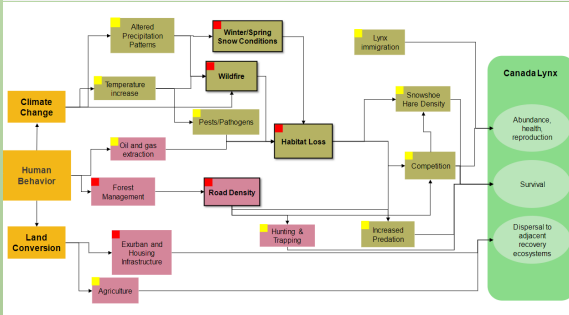
Addresses the who, what, how and when

Landscape-scale strategies to efficiently ameliorate threats collaboratively

Coming in Phase 3

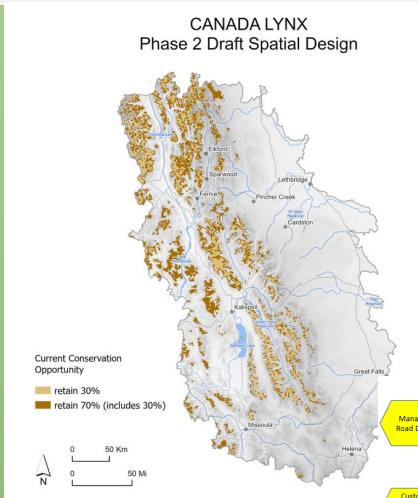
LCD Products ... How do you use information?

Situation Analysis

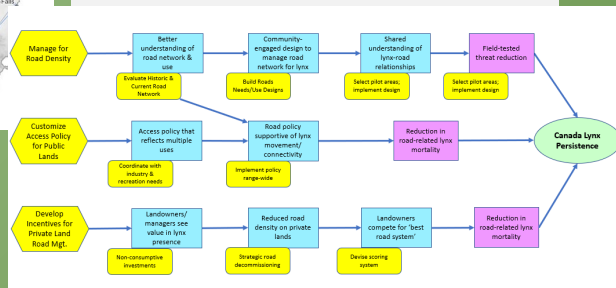


- *Full length Reports (peer-reviewed)*
- *Executive Summaries*
- *Published Literature*
- *Fact Sheets*
- *Webinars*
- *Printable Maps*
- *Data / Metadata*
- *Online Web Mappers*
- *Communities of Practice*
- *Extension Support (ie., Help Desk)*
- *Your preference!*

Spatial Design



Strategy Design



Interaction 2: to the Jamboard!

Crown LCD Phase 3: 2024 – 2025



Confederated Salish & Kootenai Tribes
of the Flathead Reservation

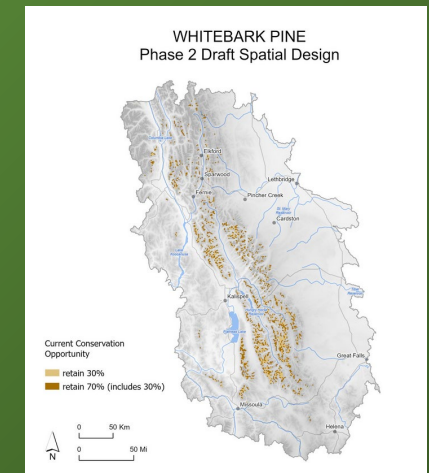
Biocultural Restoration in the Crown of the Continent:

- *2023 America the Beautiful Challenge grant award (\$3.5 million)*
- *Led by Confederated Salish and Kootenai Tribes*
- *Whitebark pine restoration, bison habitat improvements, flowering rush management*
- *Local training and jobs*



Landscape Conservation Design integration:

- *Strategic approach for Whitebark pine restoration a model for LCD*
- *Cultural-ecological integration ... Indigenous knowledge guides spatial planning*
- *\$450k support for influx of knowledges, convening stakeholders and completing a 'full' Design in 2025.*



Biocultural Restoration & LCD

Landscape Features:

Ecological Features:

| Fine Features | Coarse Features |
|----------------------------|-----------------|
| Whitebark Pine | Forest |
| Bull Trout | Grassland |
| <u>Westslope Cutthroat</u> | Shrubland |
| Mule Deer | Wetland |
| Elk | Riparian |
| Grizzly Bear | Aquatic Systems |
| Wolverine | Connectivity |
| Canada Lynx | |

Social, Cultural , Economic Features:

Water Availability
Air Quality
Recreation / Access
[others]



Biocultural Restoration & LCD

LCD Phase 3 Goals:

- *More fully integrate Indigenous knowledge*
 - *Social, cultural features*
 - *Ecological features*
- *Improve stakeholder engagement*
 - *Engage communities*
 - *Understand and integrate voices*
- *Revisit, improve Phase 2 processes & products*
 - *New voices, new data, vetted processes*
 - *Review & enhance Situation Analyses & Spatial Designs*
- *Co-develop Strategy Designs*
- *Build out communication tools*
 - *Web mapper and associated decision tools*



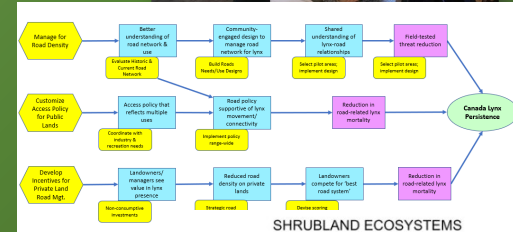
Holistic



Inclusive

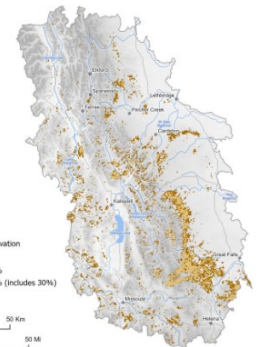


Iterative



Transparent

SHRUBLAND ECOSYSTEMS Phase 2 Draft Spatial Design



<https://www.crownmanagers.org/landscape-conservation-design>

Landscape Conservation Design
THE CROWN LCD
LANDSCAPE FEATURES DOCUMENTS & PRODUCTS
MEETING RESOURCES
OUR PARTNERS
OTHER LCDS
CONTACT US

CROWN OF THE CONTINENT Landscape Conservation Design

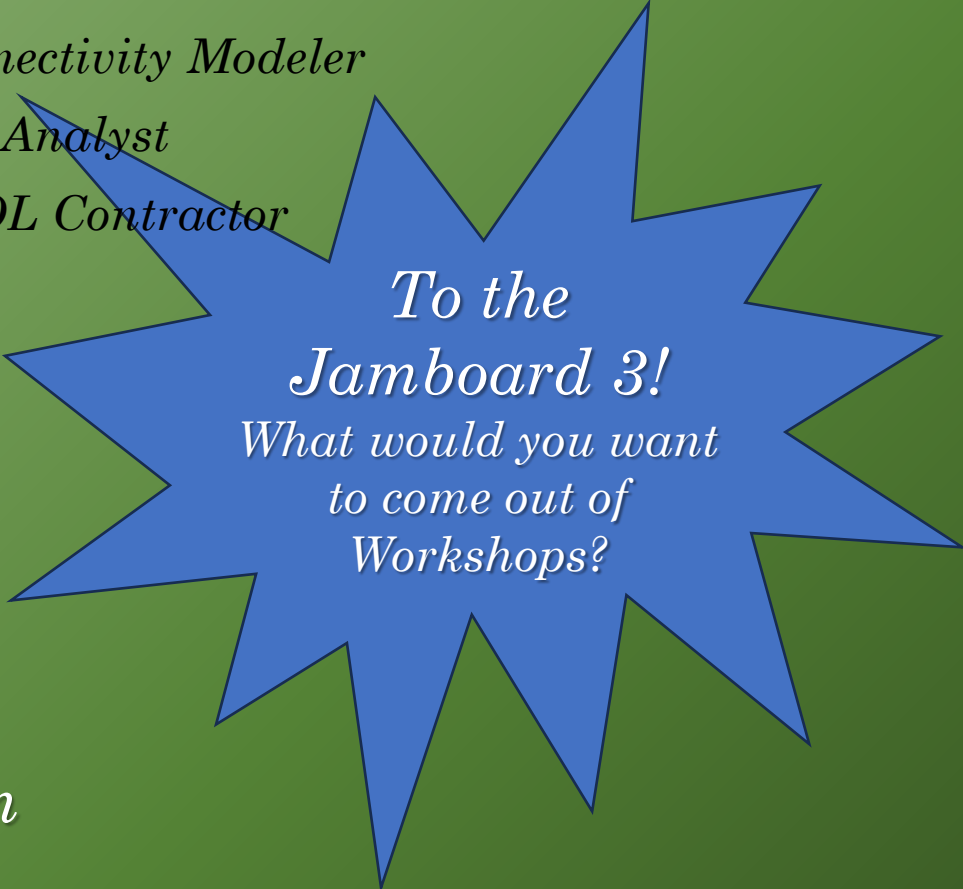
CONSERVATION WITHOUT BORDERS

Crown Managers Partnership (CMP) is leading integrative, data-informed conservation planning over the next 5 years. The goal is to bring all of the great science and planning across the Crown into a landscape scale 'design' that considers not only wildlife and ecosystems, but cultural, social, and economic priorities as well.

most Conservation opportunity
retain 30%
retain 70% (includes 30%)

Crown LCD Phase 3: How?

- *Continue to integrate Indigenous Knowledge*
- *Expand Analysis Team with targeted expertise**
 - *Conservation Standards Facilitator*
 - *Social, Cultural, Economic Feature Coordinator*
 - *Climate Adaptation Specialist*
 - *Connectivity Modeler*
 - *GIS Analyst*
 - *AGOL Contractor*
- *Feature-focused Workshop Series*
 - *10 Workshops co-hosted by LCD Stakeholders, 2024-25*
 - *Expert Facilitation*
 - *Research and Practitioner tracks*
 - *Research: improve & expand models*
 - *Manager: Co-develop landscape-scale Strategy Designs*
- *Integrate feature designs into a Landscape Design*



*To the
Jamboard 3!
What would you want
to come out of
Workshops?*

** Seeking & recruiting contract positions now – use Jamboard to share your ideas!*

Crown LCD Phase 3: Timeline

- *Early April, 2024:*
 - *Draft Phase 2 report out for review*
 - *Data repositories available to all partners*
- *April-May 2024*
 - *Recruit, engage candidate contractors**
 - *Re-form and expand Social-Cultural Economic Subteam*
 - *Plan initial workshops*
- *June-July 2024*
 - *Bring on & train contractors*
 - *Co-host 1st workshop*
 - *Phase 2 Report complete*
 - *Update/upgrade web site & data repository*
 - *Initiate Strategy Design development*
- *August 2024 - May, 2025:*
 - *Workshops, summaries and follow-through*
 - *Pre/post workshop calls & webinars*
 - *Collaborative advancement of updated*
 - *Situation Analyses*
 - *Spatial Designs*
 - *Strategic Designs*
- *May 2025 –*
 - *Roll out Web maps & applications*
 - *Draft Phase 3 Feature reports*
- *December 2025 –*
 - *Phase 3 moving toward completion*

** Seeking & recruiting contract positions now – use Jamboard to share your ideas!*

Crown LCD Phase 3 Workshops



- *Self-nominate to CoHost (Jamboard)*
- *LCD provides support funding (~\$1,000 / workshop)*
- *Professional Facilitator Provided*
 - *Support from Analysis Team and*
 - *Workshop Working Group*
- *Certain outcomes expected BUT ...*
 - *inclusive, holistic, transparent = flexible and innovative*
 - *YOUR IDEAS and NEEDS included!*

| WORKSHOP OVERVIEW PAGE | | black font = confirmed | blue font = tentative | | |
|------------------------|----------------------------|------------------------|--|-------------------------------|---|
| No. | Feature | A Team Lead(s) | Host Partner | Location | Working Group |
| 1 | Bull Trout/WS Cutthroat | Sean | Glacier NP | West Glacier, MT | Clint Muhlfeld, Vin D'Angelo, Tara Carolin |
| 2 | Connectivity | Sean | Waterton NP | Waterton Lakes | Annika Keely, Kathy Zeller, Mariana Calabrise |
| 3 | Wetlands/Riparian | Danie | Intermountain West Joint Venture | Missoula, MT | Patrick Donnely |
| 4 | Aquatic/Water | Phil, Matt | Flathead Lakers/Flathead Lake Biological Station | Kalispell, MT/ Yellow Bay, MT | Constanza von der Pahlen |
| | Mule Deer/Rocky Mt Elk | Maddy | | | |
| | Canada Lynx/Wolverine | Phil | | | |
| | Shrublands/Grasslands | Aubin | | | |
| | Forest/Whitebark Pine | Sean | | | |
| | Grizzly Bear | Bailie | | | |
| | Social, Cultural, Economic | Maddy | | | |

Discussion, Questions, Critique



News from Around the Crown

