



Crown Managers  
Partnership



# Being Relevant

## Regional Trans-boundary Collaboration in the Rockies



# Not Just Another Place...



# Not Just Another Place...



# Not Just Another Place...





# Crown of the Continent Ecosystem

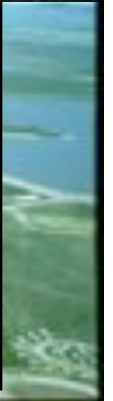
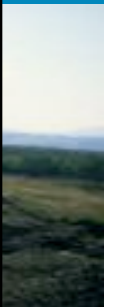
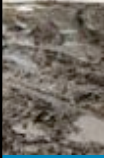
- Large, intact ecosystem
- High profile setting
- Unique attributes
- Peace Park at core
- Highly valued



First Nation / Tribal Lands  
Parks Canada / U.S. National Parks Service  
B.C. Ministry of Environment  
Alberta Tourism, Parks and Recreation  
B.C. Ministry of Forests  
United States Forest Service  
Alberta Sustainable Resource Development  
United States Fish and Wildlife  
Montana DNRC (State Forests)  
U.S. Bureau of Land Management  
Private Land  
Counties / MDs / Regional Districts  
Cities / Towns / Villages

## Jurisdictional Complexity

# Alberta Hot Spots



Crown Managers  
Partnership

# B.C. Hot Spots

- Natural resource economy
- Cabin Creek
- B.C. planning
- Protected Areas Agenda





# Montana Hot Spots

- Agency history
- Protected Areas
- Rocky Mountain Front
- The Flathead



# Linkages and Liabilities



# Crown Pressures

- Climate Change
- Invasive weeds
- Fire Management
- Urban and rural residential development
- Tourism and recreational use
- Resource use and extraction
- Environmental Quality
- Water Quality, quantity, fisheries, aquatics
- Wildlife habitat – fragmentation and loss
- Degradation of ecosystem goods and services
- Cultural/traditional use

# Limited Resources and Capacity



# Crown Managers Partnership Genesis

## 20<sup>th</sup> Century:

- International Peace Park



## 21<sup>st</sup> Century:

- A broader partnership



# In this thing together....



- The environment doesn't recognize jurisdictional boundaries;
- There is a need for cooperation and stewardship in a world of shared resources; and
- Canadians and Americans have an enduring interest in peace, goodwill and a willingness to work together cooperatively.

# Crown Managers Partnership History

## Cranbrook 2001:

- Cumulative effects of human activity
- Increased public interest in land
- Recreational and visitation demands
- Shared data and monitoring
- Maintenance and sustainability of shared wildlife populations



# Crown Managers Partnership History

- April 2002, Whitefish: Cumulative Effects
- April 2003, Pincher Creek: ALCES
- Feb 2004, Cranbrook: Fire
- March 2005, Kalispell: Invasive plants
- March 2006, Lethbridge: Watershed Partnerships
- March 2007, Cranbrook: Ecological Health
- March 2008, Whitefish: Carnivores
- Feb 2009, Pincher Creek: Biodiversity
- April 2010: Fernie: Climate Change
- March 2011 Polson: Aquatic Invasive Species
- March 2012: Lethbridge: Tribes and First Nations

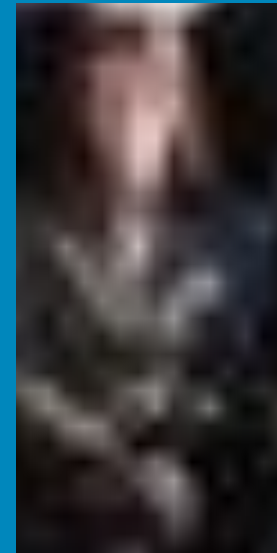




# CMP Steering Committee 2012

- Mary Riddle (Chair): Glacier National Park, MT
- Bill Dolan: Alberta Tourism, Parks and Recreation, AB
- Dennis Madsen: Waterton Lakes National Park, AB
- Len Broberg: University of Montana, MT
- Mike Quinn: University of Calgary, AB
- Tom Bell: B.C. Ministry of Environment, B.C.
- Caryn Miske: Flathead Basin Commission, MT
- Erin Sexton: Flathead Lake Biological Station, MT
- Jimmy DeHerrera: Flathead National Forest, MT
- Steve Fry: Dept of Natural Resources and Conservation, MT
- Travis Ripley, Alberta Sustainable Resource Development, AB
- Ian Dyson, Alberta Environment, AB

**Coordinator:**  
**Sasha Harriet**



# CMP Modus Operandi

## Structure:

- Cooperative agency partnership (CMP doesn't manage, agencies do)
- Participants: federal state and provincial agencies, tribes and First Nations, educational institutions
- Steering Committee

## Guidance:

- Strategic Plan
- Annual Forums based on themes
- Annual Workplan
- Projects

# A Better Way Forward?

## Environmental Quality:

- As good as it gets

## Land Use Challenges:

- Chronic and continuing hot spot

## Jurisdictional Challenges:

- Complex and trans-boundary

## Response:



Assure environmental quality



Manage growth pressures



Common outcomes align

# CMP Strategic Plan (2011)

**Vision:** An ecologically healthy Crown of the Continent Ecosystem

**Mission:** A diverse group of agencies working together to achieve the vision by:

- Building an understanding and awareness of the ecological health of the Crown ecosystem
- Building enduring relationships and collaborating across mandates and borders

# Other Projects

- Invasive Plants Guide
  - Aquatic Invasive Species Guide
  - Map Project
- 
- Alberta-Montana MoU



---

MEMORANDUM OF UNDERSTANDING  
AND COOPERATION BETWEEN  
THE GOVERNMENT OF THE STATE OF MONTANA,  
UNITED STATES OF AMERICA AND THE GOVERNMENT OF THE  
PROVINCE OF ALBERTA, CANADA,  
RESPECTING THE MONTANA/ALBERTA  
BILATERAL ADVISORY COUNCIL (MABAC)

---

# Other Crown Initiatives

- Crown of the Continent Educational Consortium



- Crown of the Continent Geotourism Council



# Other Crown Initiatives

- America's Great Outdoors



- Crown of the Continent Initiative



The University of  
**Montana**



# Great Northern LCC

- Initiated April 2010
- Includes Alberta's Eastern Slopes
- Functioning Steering and Advisory Committees
- Developing a Strategic Conservation Framework: Vision, Mission, conservation priorities
- Three sub regions: Rocky Mountains, Columbia Basin and Sage-Steppe.





# Crown Roundtable (CRT)

- Initiated 2009. Has adopted CCE boundary identified by the CMP
- Early Alberta engagement by Hon Evan Berger
- All parties active in the CCE
- CMP has 2 reps on Leadership Committee
- Focus on Kresge Grant project funding.



Roundtable on the Crown of the Continent

# What is the CMP?

A forum for promoting collaboration amongst willing regional managers:

- Environment, land use and natural resources
- Protected areas and working landscapes
- Threats: Invasives and Climate Change

Cultural perspectives, Social values, Economic drivers

A high profile area where the various jurisdictions can demonstrate the value of a collective approach: manage pressures, alignment, lower risk, leadership.



# CMP Opportunities

- **Demonstrate collective stewardship capacity – raise our collective institutional game**
- **Coordinated approach to address “Crown-wide” challenges**
- **Reduce duplication and improve communication**
- **Learn from each other (successes and failures)**
- **Enhanced capacity : institutional, science and management**
- **Provide assurance of regional environmental quality.**

# CMP Experience: Learnings

- It takes time. Reputation. Relationships. Institutional comfort level.
- Applied focus – find a way forward (ALCES, RLAP, EH)
- Strategic alliances – external horsepower/commitment
- Right sizing organizational capacity
- Seize opportunities for expanding the tent.
- Doing work across multiple jurisdictions and boundaries – “We were made to suffer”



Crown Managers  
Partnership



# Managing for Ecological Health

... at a regional  
scale



# CMP Strategic Plan (2011)

## Vision:

**An ecologically healthy Crown  
of the Continent Ecosystem**

**“We will collectively develop defined measures of ecological health and the adaptive capacity to meet them, across borders, amongst jurisdictions and with stakeholders by the end of the decade.”**



**Crown Managers  
Partnership**

# Ecological Health Project

- Long-term, multi-faceted project aimed at defining a level of ecological health that can inform agencies' management;
- Multi-year strategic priority for CMP;
- Establish on indicators-based, environmental outcomes approach



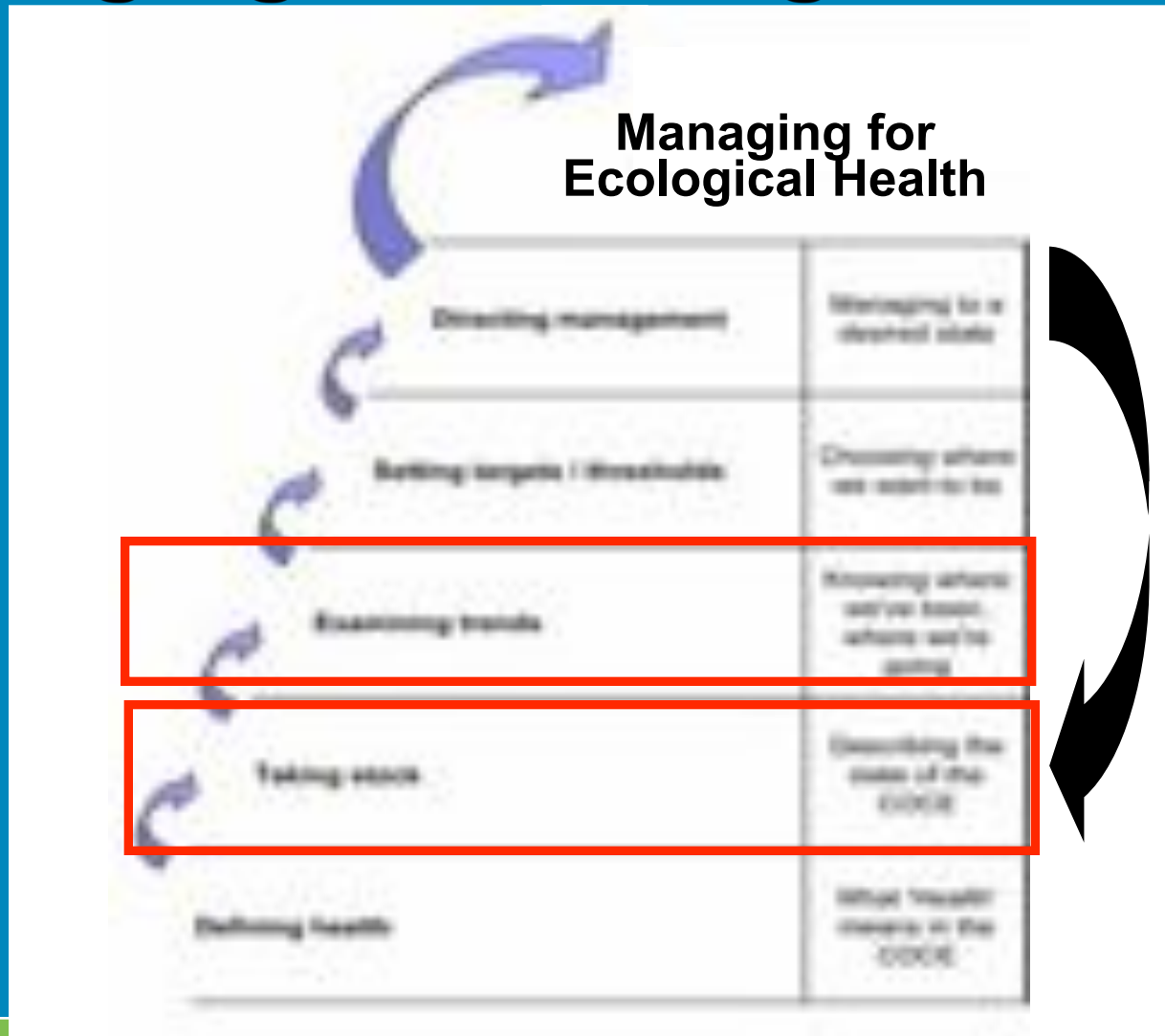
# Indicators of Ecological Health

- **Landscape**
- **Biodiversity**
- **Water quality**
- **Exotics**
- **Climate**
- **Air quality**

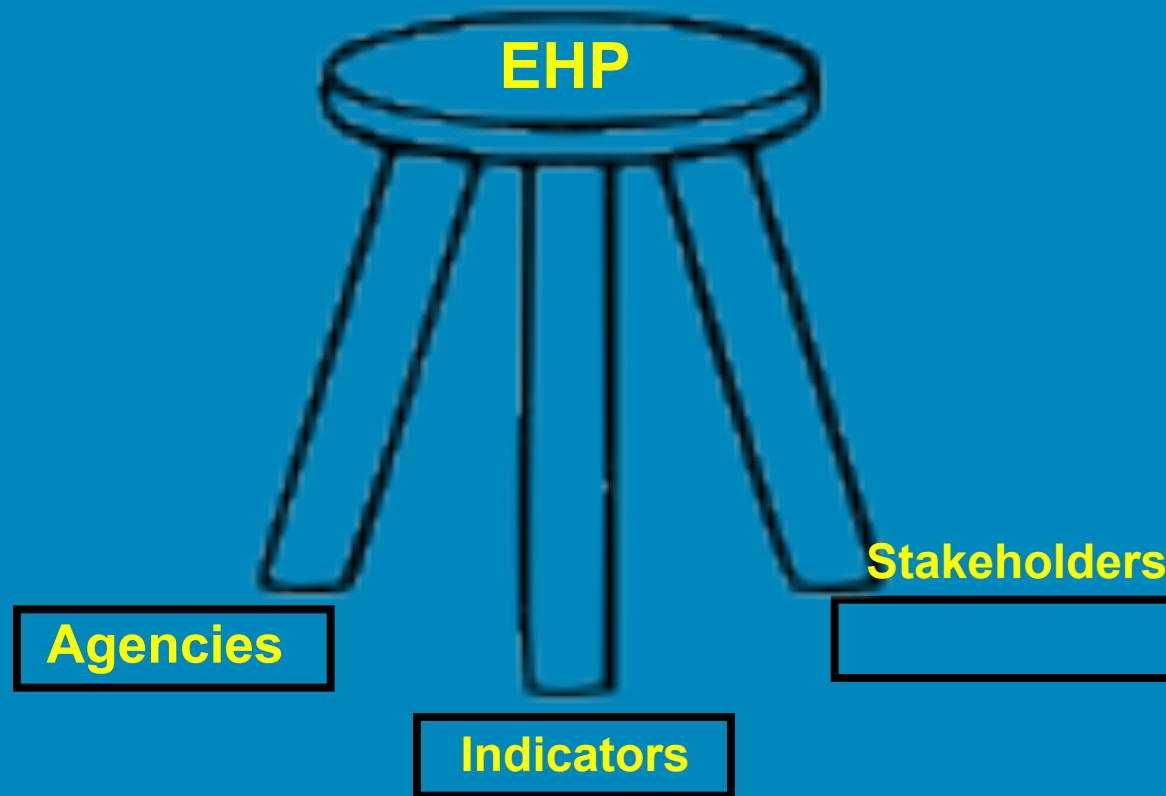


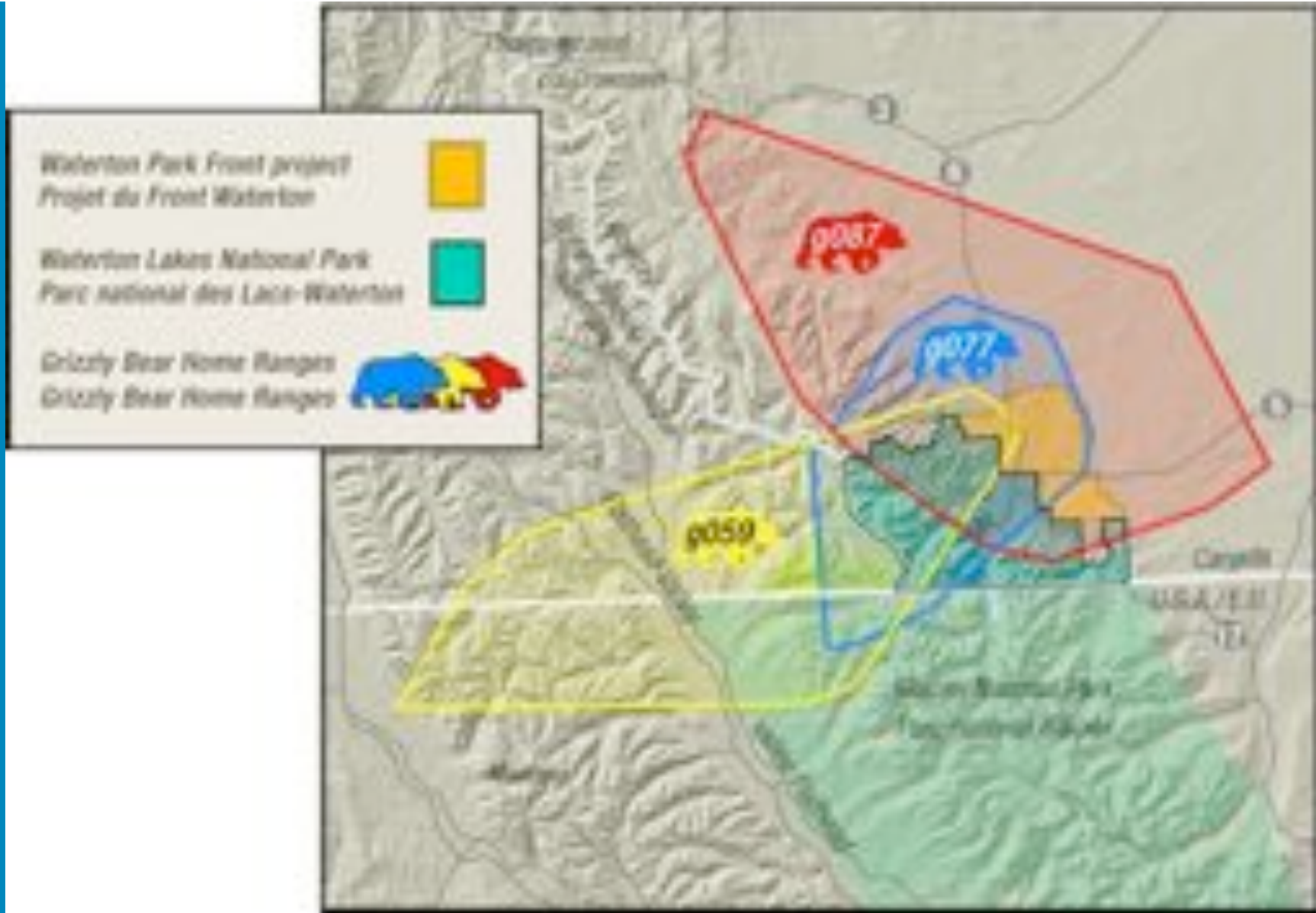


# Managing for Ecological Health



# EH: Supporting Components





# Ecological Health Project

## Annual Crown Managers Forum:

- 2007 - Defining Ecological Health Indicators
- 2008 - Landscapes and Wide-ranging carnivores in the CCE
- 2009 - Biodiversity in the CCE
- 2010 - Climate Change in the CCE
- 2011 – Aquatic Invasive Species
- 2012 – *Connections to the Land –*



*Exploring a Cultural Indicator for the EHP*

# Indicators

- **Air quality**
  - Assemble current ambient state and provincial guidelines;
  - Compile a dataset of AQ monitoring readings in the CCE;
  - Convene a workshop of AQ experts:
    - AQ issues and trends
    - Potential management response
    - Desirable AQ outcomes;
    - CCE wide monitoring network?
- **AIS:**
  - Summarize learnings from Forum. Map known infestations
  - Evaluate preventative strategies and i.d. response protocols
  - i.d. AIS CCE outcomes and response protocols to implement.

# Indicators

- **Climate Change**
  - Consider risks of climate change when recommending standards, thresholds and triggers for all other indicators.
  - *Beyond EHP: collaborate with other parties on climate change adaptation.*

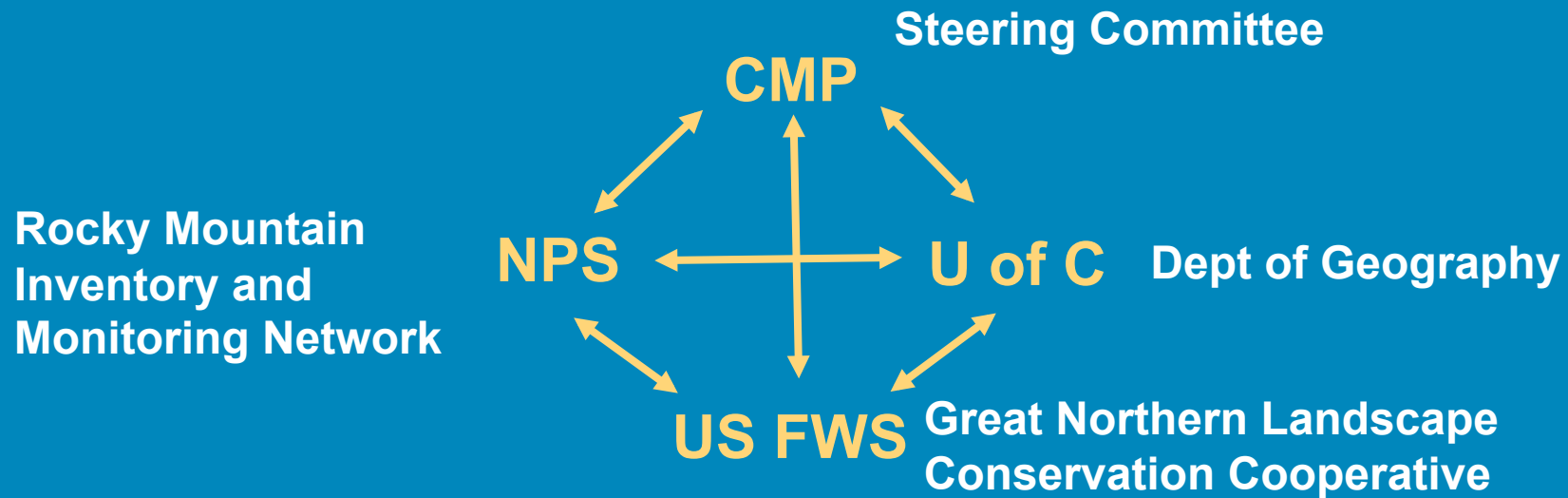
# Landscape Analysis

- Assemble common trans-boundary geospatial datasets
- Inventory resource condition at the scale of the CCE and establish indicators to measure change to the landscape over time
- Evaluate inferences between landscape metrics and ecological health.
- Identify supplemental work required for remaining EH themes.



Crown Managers  
Partnership

# The Partnership



## Landscapes Working Group

Greg McDermid (U Calgary)

Tracy Timmins (U Calgary)

Laura O'Gan (NPS ROMN)

Justin Wilkes (AB Env)

Erin Sexton (UM FLBS/CMP)



# Landscape Analysis

- Develop a suite of comprehensive transboundary geospatial datasets and maps representing various attributes of the landscape at the CCE scale and applicable to the assessment
  - Baseline datasets at the scale of the Crown :
    - Roads
    - Census
    - Streams, Watershed, Riparian Buffer Zone, Road-stream Crossing
    - Land cover, phenology
    - Fire, insects



Crown Managers  
Partnership

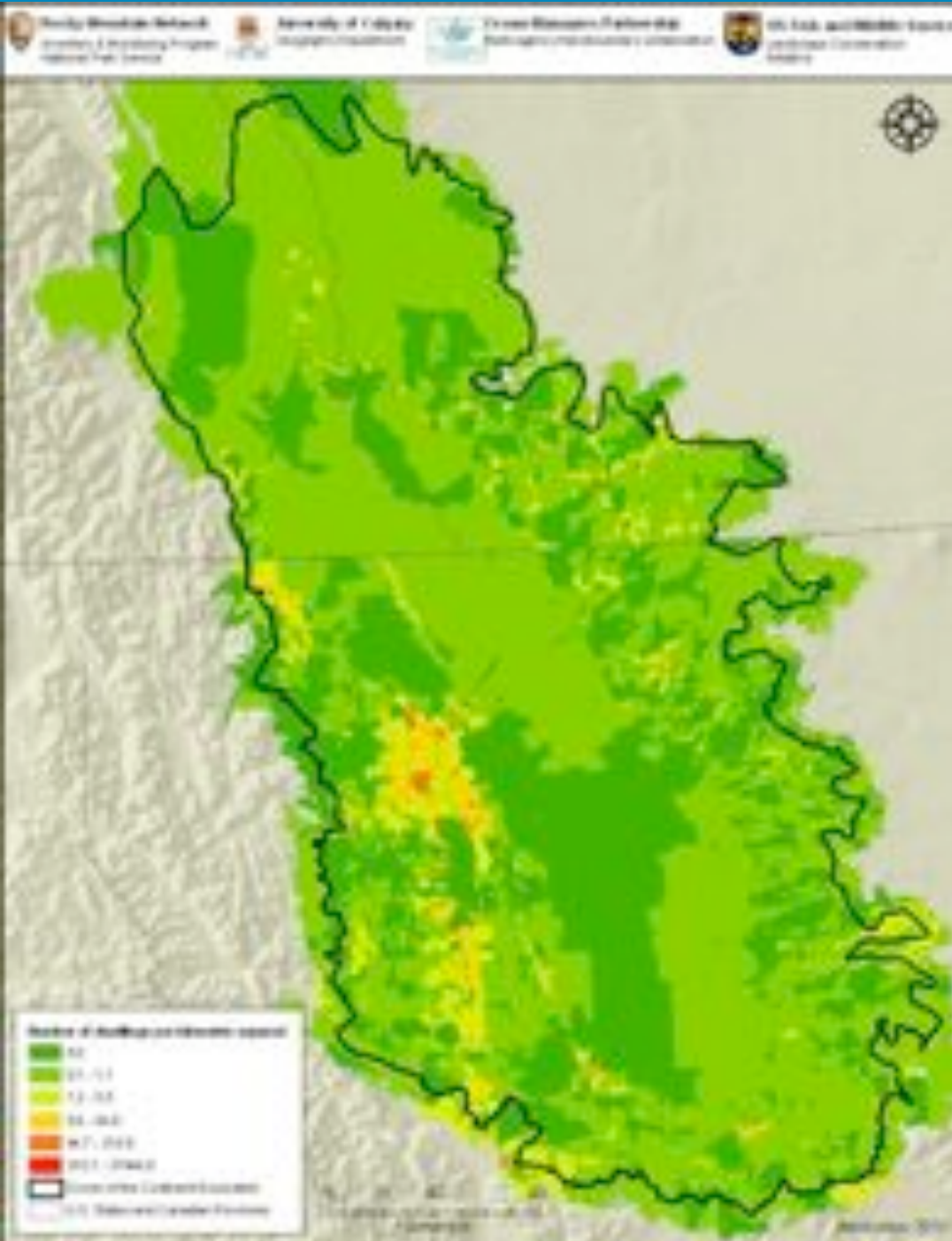
# Landscape Dynamics 2009-2010

- **Data-base: Inventoried and synthesized all of the freely available geospatial data within the CCE for the land cover, phenology, disturbances, hydrology and roads**
- **First series of baseline data maps**
- **Two Reports:**
  - ***CMP Landscapes Data Review Report – A Review of Baseline Geospatial Datasets for the Crown of the Continent Ecosystem Landscape Project***
  - ***NPscapes Products: Presenting examples of maps and statistical tables derived through NPscope (2010)***



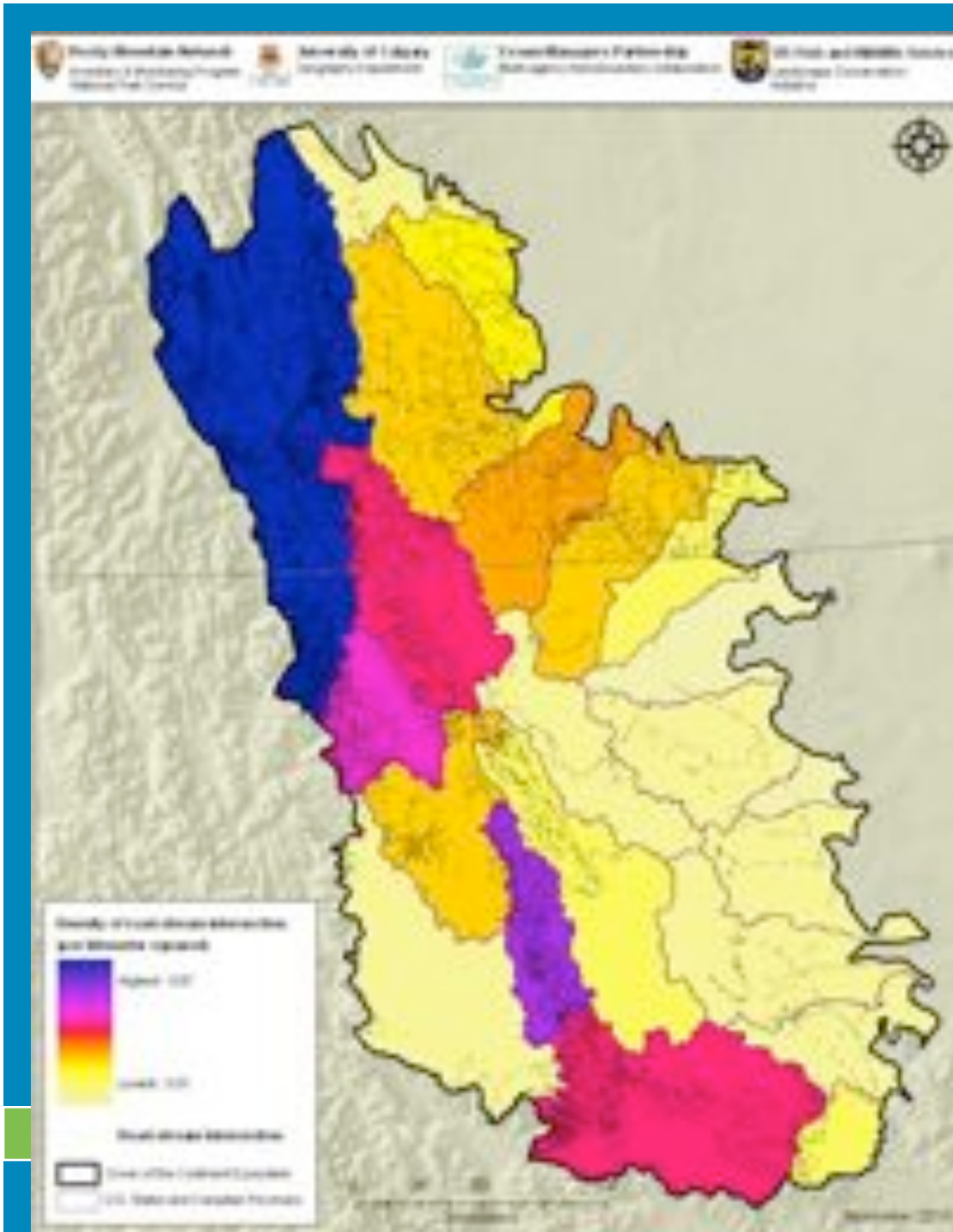
# CCE BASELINE DATASETS

*Number of dwellings per dissemination block of the Crown of the Continent Ecosystem*



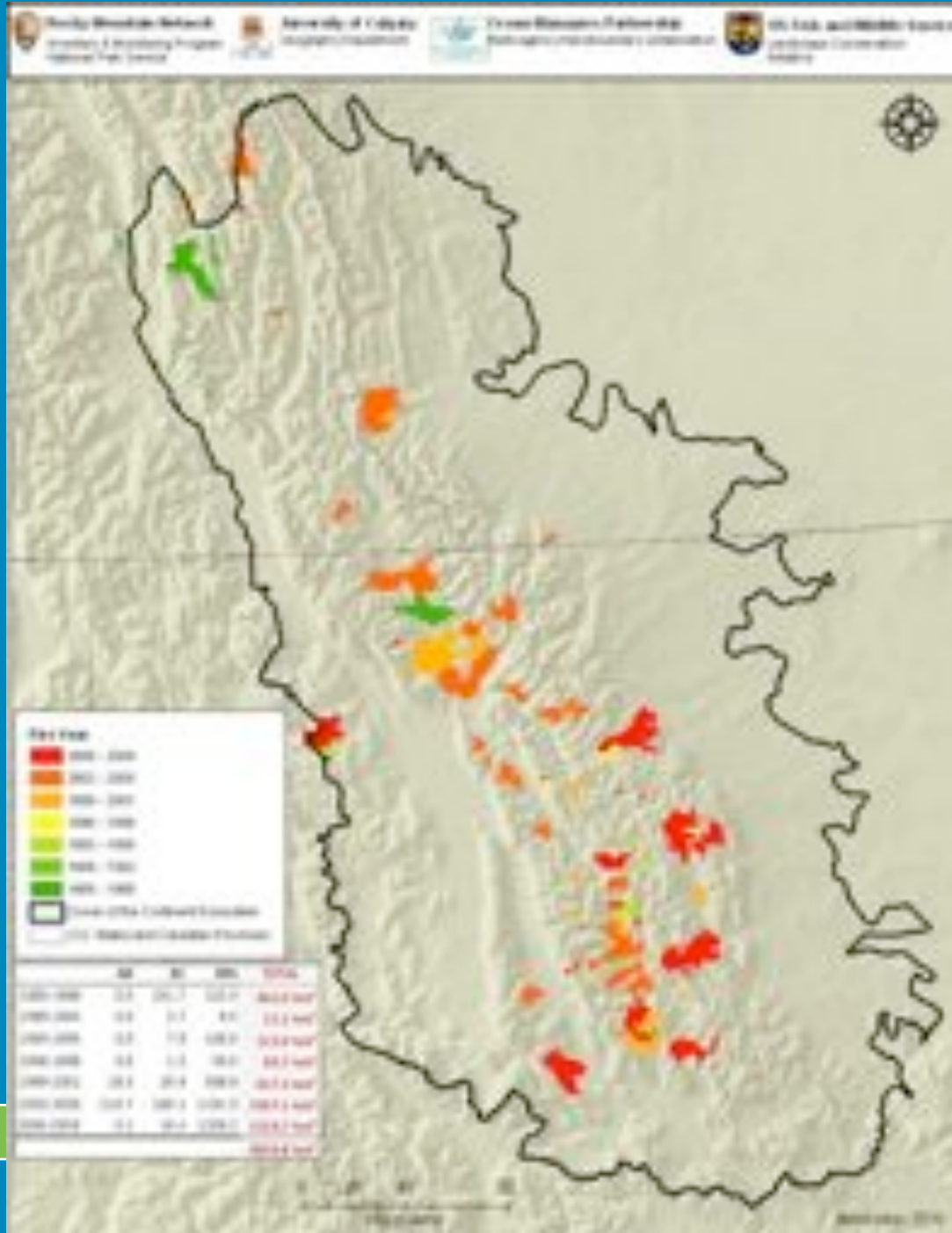
# CCE BASELINE DATASETS

*Density of road and stream intersection per km<sup>2</sup> within the Crown of the Continent Ecosystem*

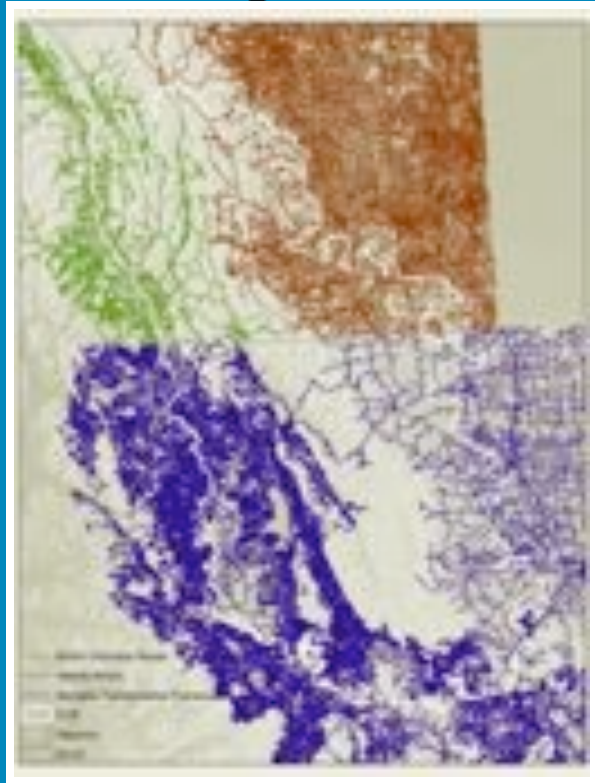


# CCE BASELINE DATASETS

*Fire perimeters within the Crown of the Continent Ecosystem*



# Roads example: it might look simple...



State and  
Provinces Roads



Statistics and  
Census Roads



Comparison  
*Gaps*



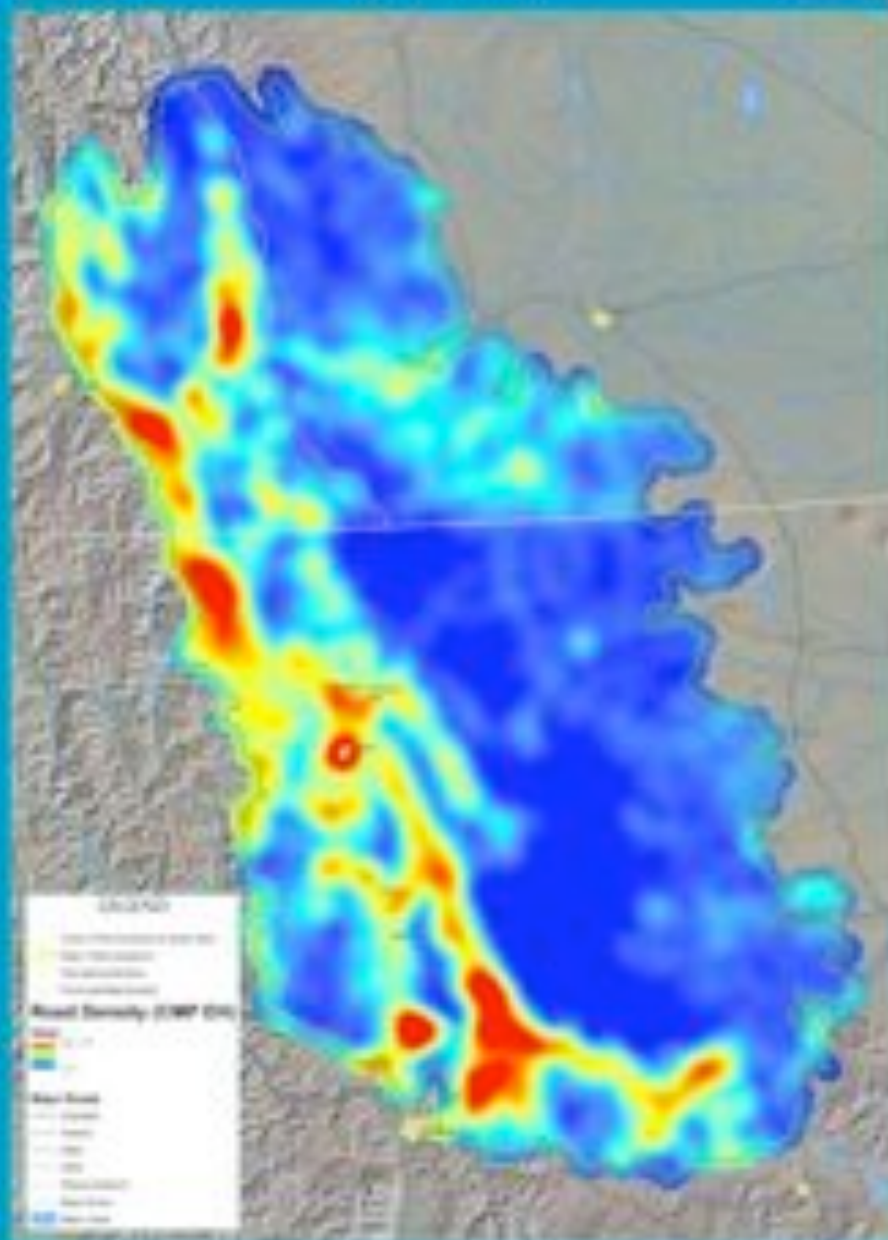
# CROWN OF THE CONTINENT

## Roads



# CROWN OF THE CONTINENT

## Road Density



# Stakeholders

- **Openness**
  - Website;
  - Knowledge dissemination;
  - Annual Forums;
  - Expert engagement
- **Responsiveness**
  - Correspondence
  - Meetings
- **Collaboration (CRT)**
  - Awareness of EHP amongst CCE players
  - Test ideas and recommendations with CCE players
  - Can CCE players undertake projects or activities in support of EHP?







# Questions?

